

THIS MAP WAS PREPARED FOR ASSESSMENT PURPOSE ONLY.

SE1/4 SEC.30 T.28S. R.7W. W.M.
DOUGLAS COUNTY
1" = 200'

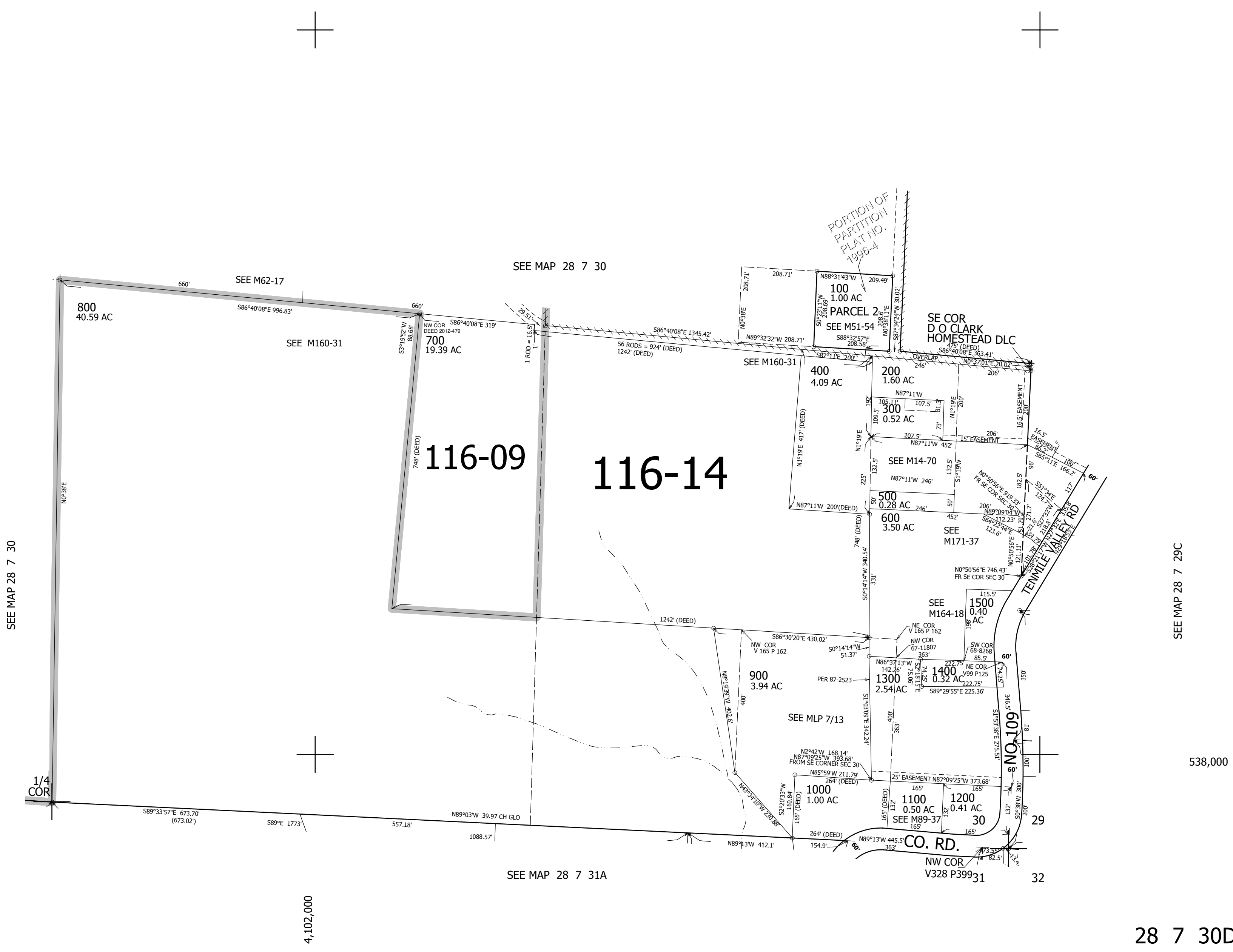
REVISED ON
7-20-21

28 7 30D

CEN. SEC.

CANCELLED NO'S
800M1 401 601

1/4 COR.



SEE MAP 28 7 30

SEE MAP 28 7 30

SEE MAP 28 7 29C

SEE MAP 28 7 31A

538,000

4,102,000

28 7 30D