

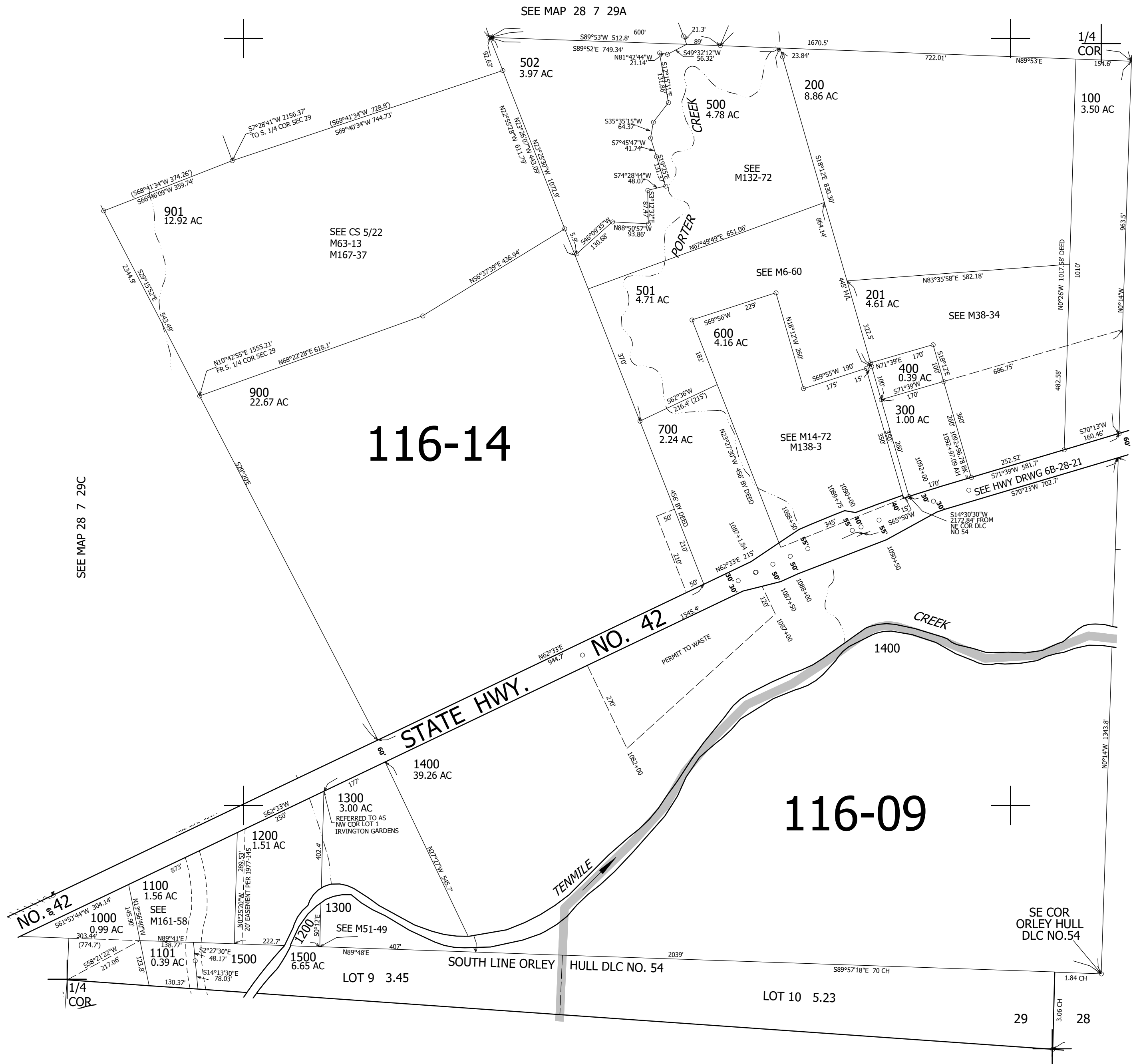
THIS MAP WAS PREPARED FOR ASSESSMENT PURPOSE ONLY.

SE1/4 SEC.29 T.28S. R.7W. W.M. DOUGLAS COUNTY

REVISED ON 8-4-22

28 7 29D

1" = 200'



CANCELLED NO'S 800 601

SEE MAP 28 7 28C

538,000

29 28
32 33

SEE MAP 28 7 32

4,109,000

28 7 29D