

THIS MAP WAS PREPARED FOR ASSESSMENT PURPOSE ONLY.

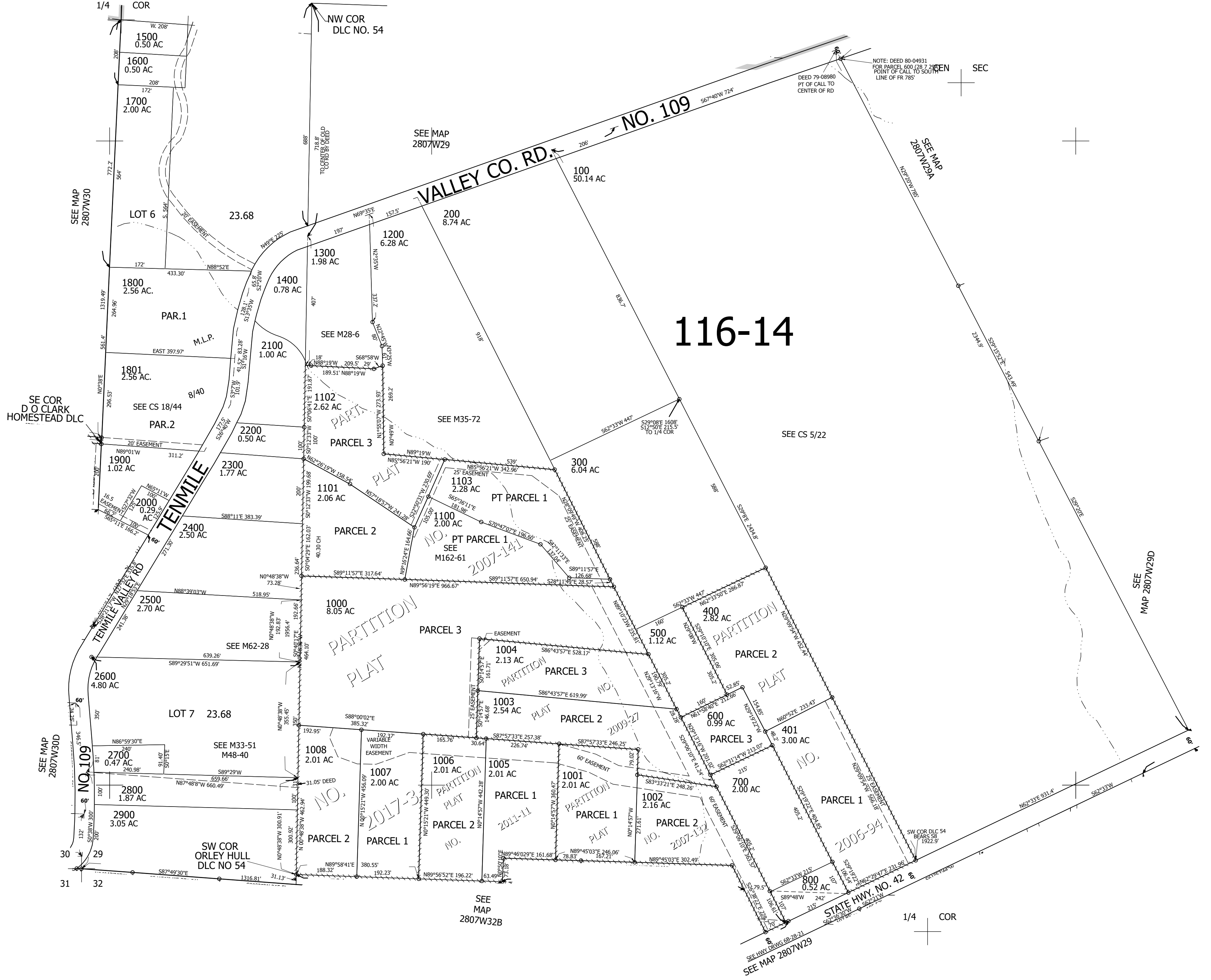
Upper Left:
123°33'47"W 43°6'33"N
4103568E 540682N ft

SW1/4 SEC.29 T.28S. R.07W. W.M.
DOUGLAS COUNTY
1" = 200'

Date Exported 2024-11-15

280729C

CANCELLED NOS:
200M1 400M1 600M1
700M1 800M1 900M1
1200M1 1300M1 901
902 900



116-14

280729C

Lower Right:
123°32'52"W 43°6"N
4107493E 537204N ft