

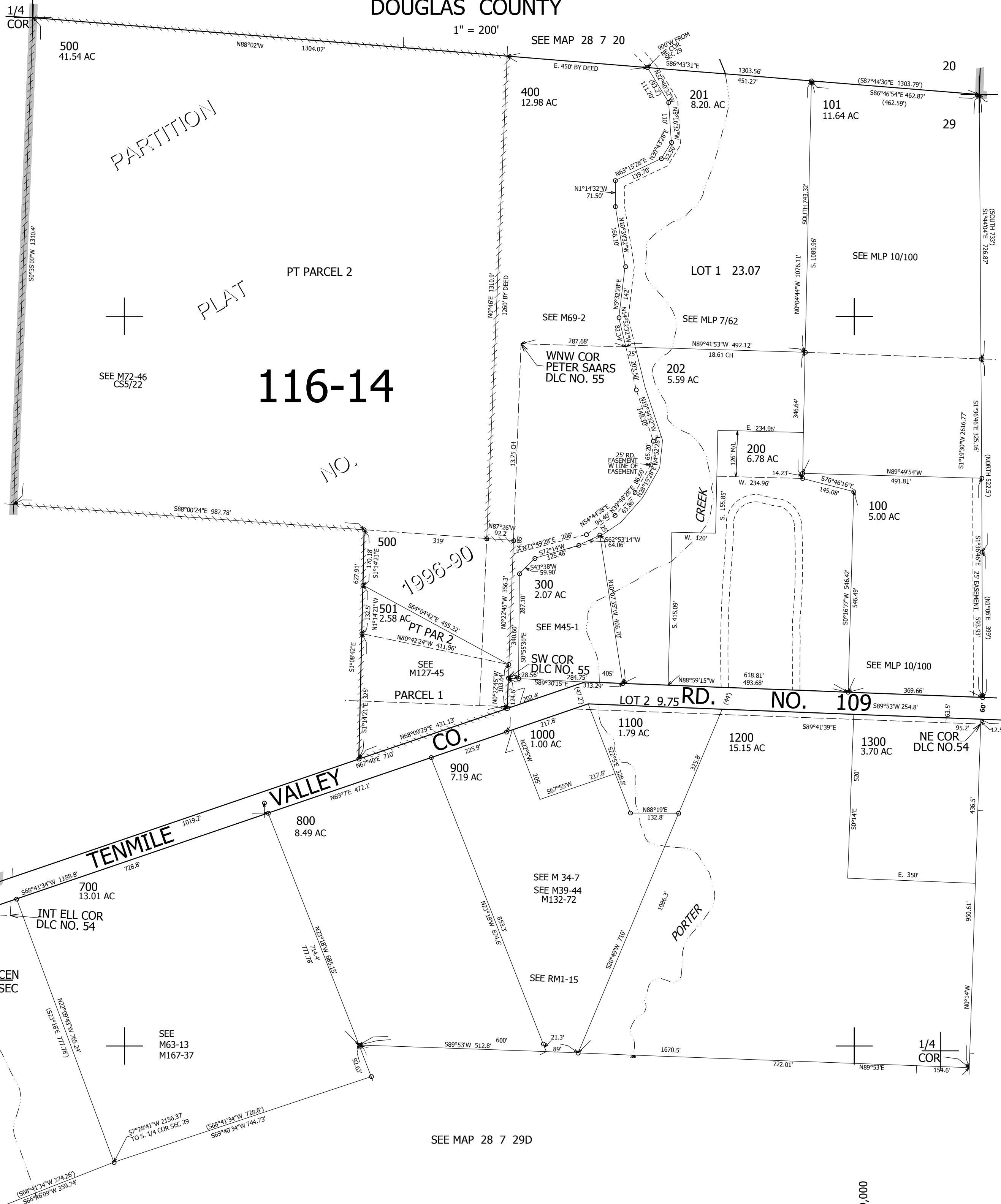
THIS MAP WAS PREPARED FOR ASSESSMENT PURPOSE ONLY.

NE1/4 SEC.29 T.28S. R.7W. W.M. DOUGLAS COUNTY

REVISED ON 4-27-15

28 7 29A

1" = 200'



116-14

NO.

1996-90

SEE MAP 28 7 29

SEE MAP 28 7 28B

RD. NO. 109

VALLEY

PORTER

SEE M63-13 M167-37

SEE MAP 28 7 29D

1/4 COR

28 7 29A

CANCELLED NO'S 502 204

540,000

4,109,000