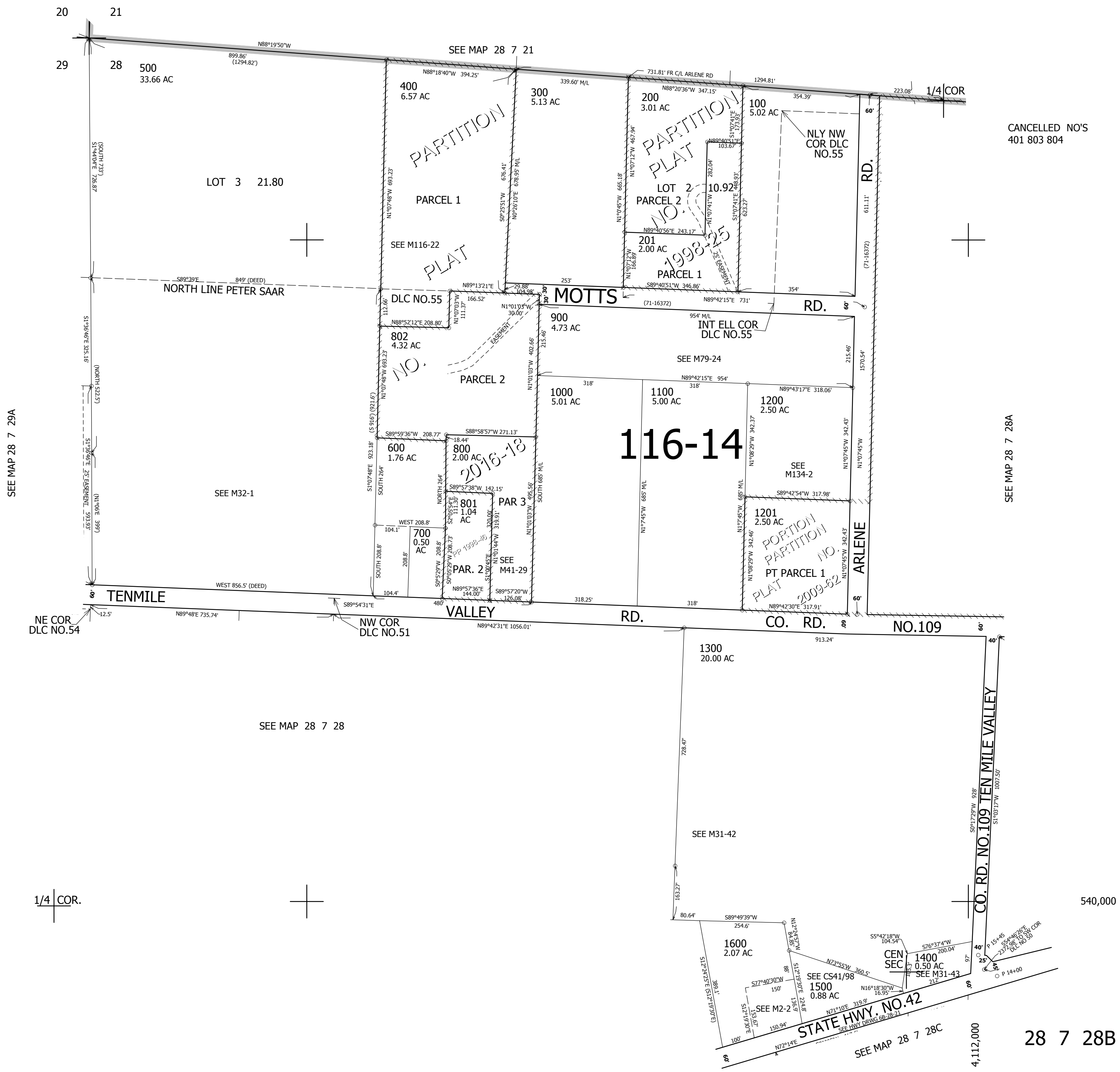


THIS MAP WAS PREPARED FOR ASSESSMENT PURPOSE ONLY.

NW1/4 SEC.28 T.28S. R.7W. W.M.
DOUGLAS COUNTY
1" = 200'

REVISED ON
7-20-16

28 7 28B



CANCELLED NO'S
401 803 804

SEE MAP 28 7 29A

SEE MAP 28 7 28A

SEE MAP 28 7 28

SEE M31-42

SEE CS41/98

SEE M31-43

SEE M2-2

SEE HWY. DRWG 68-28-21

SEE MAP 28 7 28C

1/4 COR.

28 7 28B

4,112,000