

THIS MAP WAS PREPARED FOR ASSESSMENT PURPOSE ONLY.

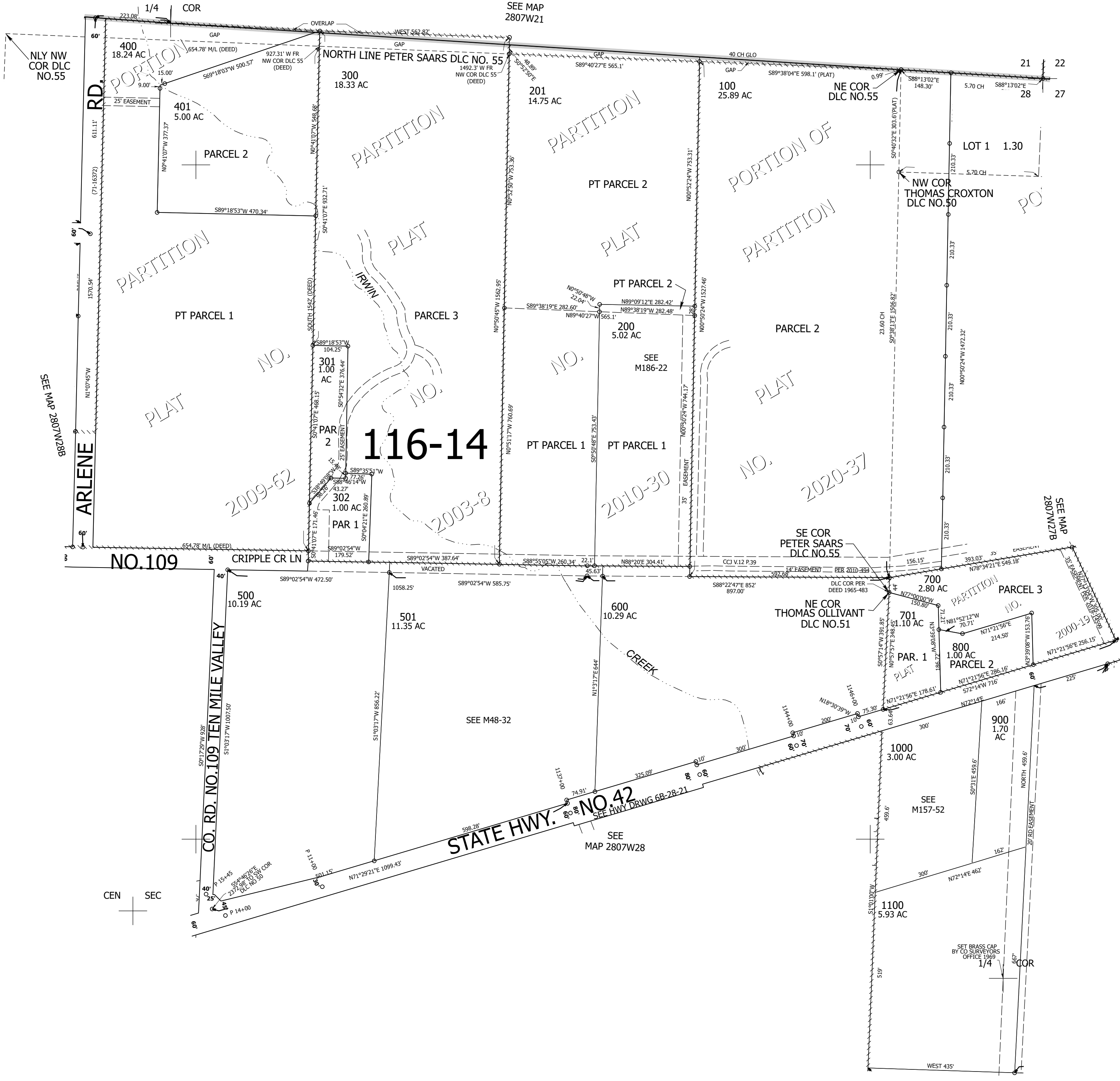
Upper Left:
123°32'6"W 43°6'56"N
4111129E 542685N ft

NE1/4 SEC.28 T.28S. R.07W. W.M.
DOUGLAS COUNTY
1" = 200'

Date Exported 2025-11-19

280728A

CANCELLED NOS:
300U1 300U2 702
202 203



116-14

CEN SEC

SEE MAP
2807W27C

280728A

Lower Right:
123°31'11"W 43°6'22"N
4115055E 539085N ft