

THIS MAP WAS PREPARED FOR ASSESSMENT PURPOSE ONLY.

SW1/4 SEC.27 T.28S. R.7W. W.M.
DOUGLAS COUNTY

REVISED ON
9-6-16

28 7 27C

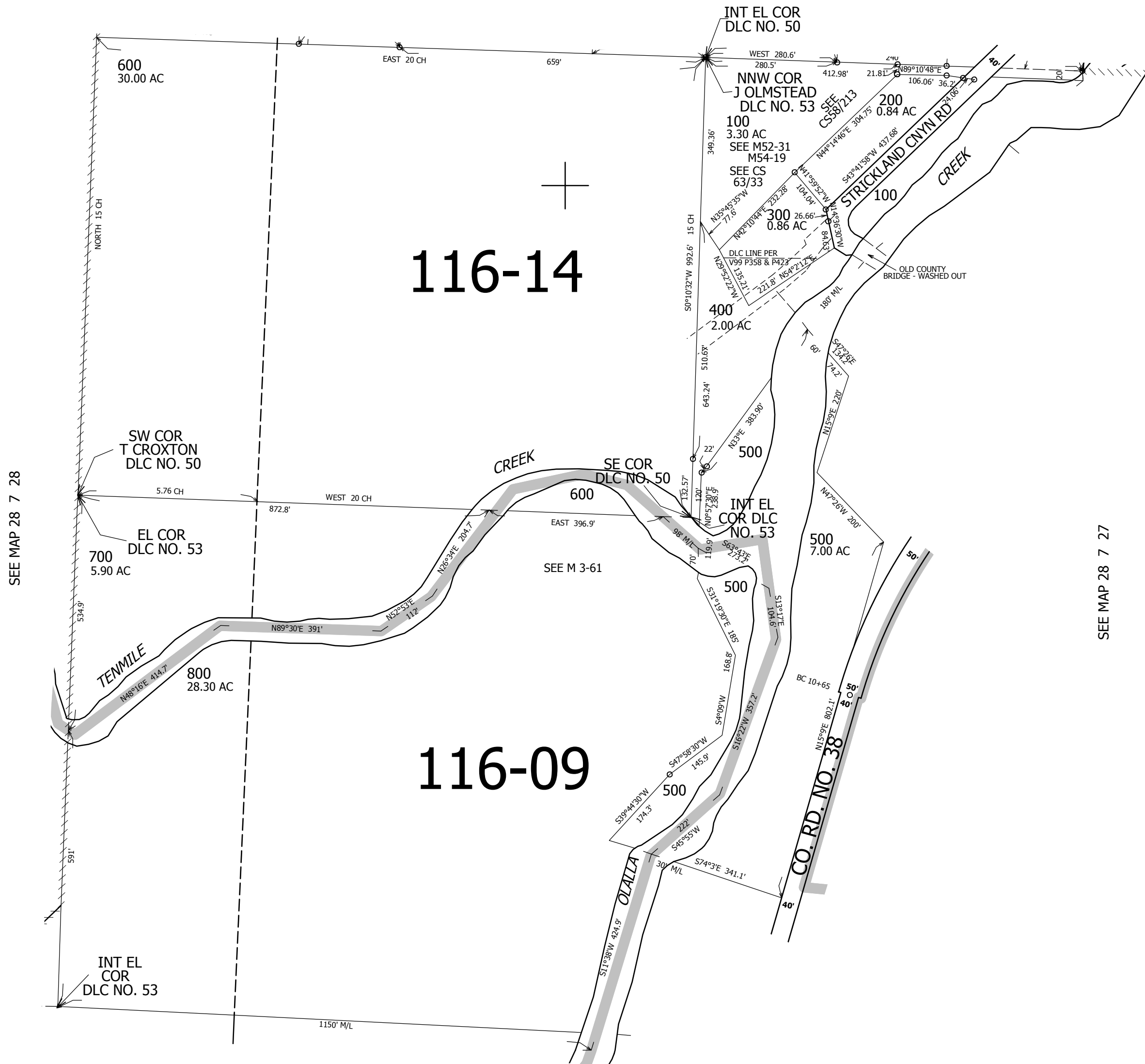
1" = 200'

1/4 COR.

SEE MAP 28 7 27B

CANCELLED NO'S
300M1

CEN SEC



SEE MAP 28 7 28

SEE MAP 28 7 27

28 27
33 34

SEE MAP 28 7 34

537,000

1/4 COR

4,115,000

28 7 27C