

THIS MAP WAS PREPARED FOR ASSESSMENT PURPOSE ONLY.

SEC.27 T.28S. R.7W. W.M. DOUGLAS COUNTY

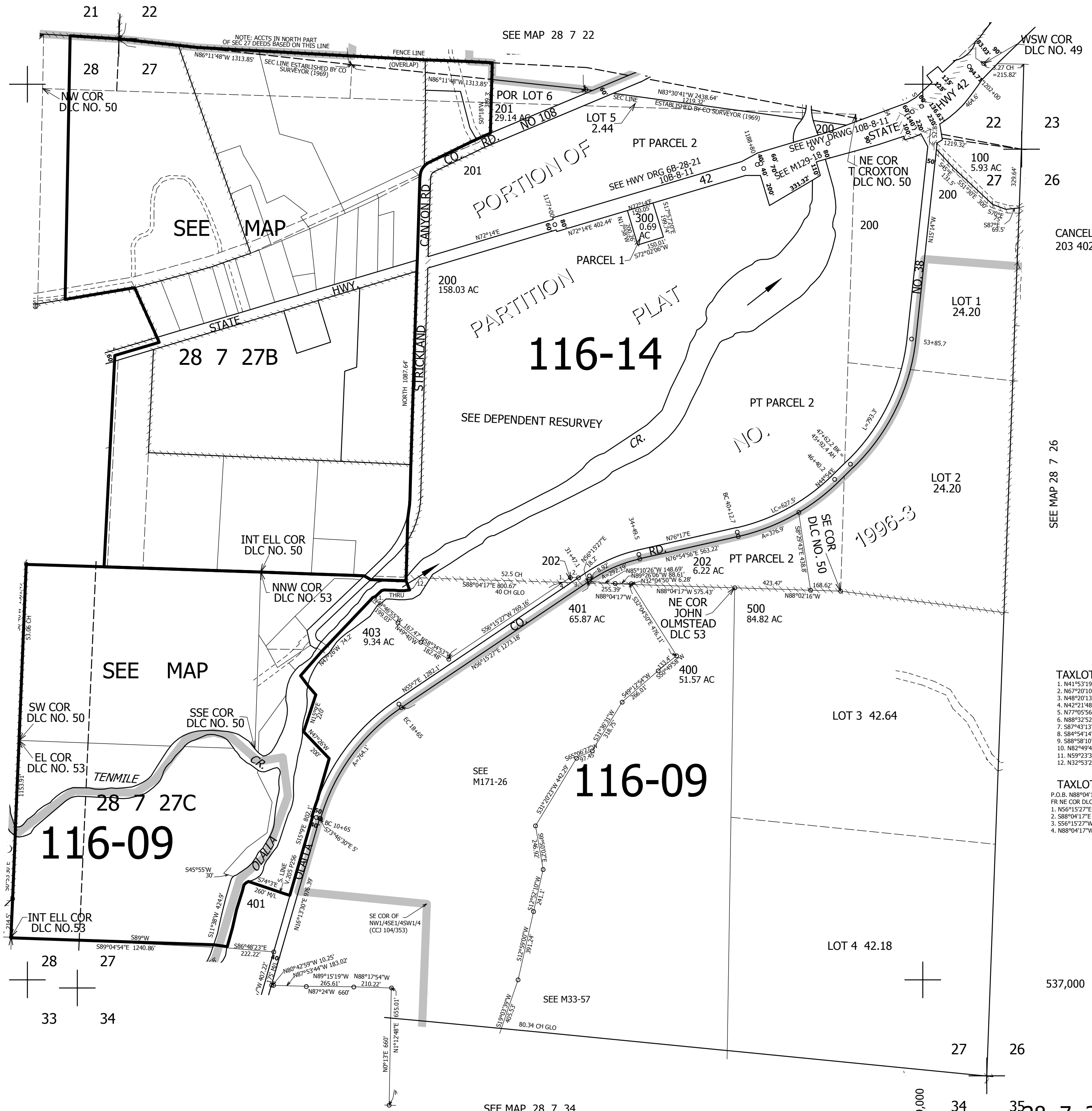
1" = 400'

REVISED ON 12-5-18

28 7 27 & INDEX

SEE MAP 28 7 28A

SEE MAP 28 7 28



CANCELLED NO'S 203 402

SEE MAP 28 7 26

TAXLOT 200

- N41°53'19"E 17.34'
- N67°20'10"E 18.01'
- N48°20'13"E 28.91'
- N42°21'48"E 17.22'
- N77°05'56"E 14.69'
- N88°32'52"E 33.93'
- S87°43'13"E 21.12'
- S84°54'14"E 27.47'
- S88°58'10"E 30.02'
- N82°49'43"E 30.6'
- N59°23'39"E 25.26'
- N32°53'22"E 63.56'

TAXLOT 202

P.O.B. N88°04'17"W 959.43'

FR NE COR DLC NO. 53

- N56°15'27"E 49.27'
- S88°04'17"E 42.87'
- S56°15'27"W 49.27'
- N88°04'17"W 42.87'

537,000

4,119,000

28 7 27 & INDEX

SEE MAP 28 7 34