

THIS MAP WAS PREPARED FOR ASSESSMENT PURPOSE ONLY.

Upper Left:  
123°29'22"W 43°6'54"N  
4123271E 542044N ft

SEC.25 T.28S. R.07W. W.M.  
DOUGLAS COUNTY  
1" = 400'

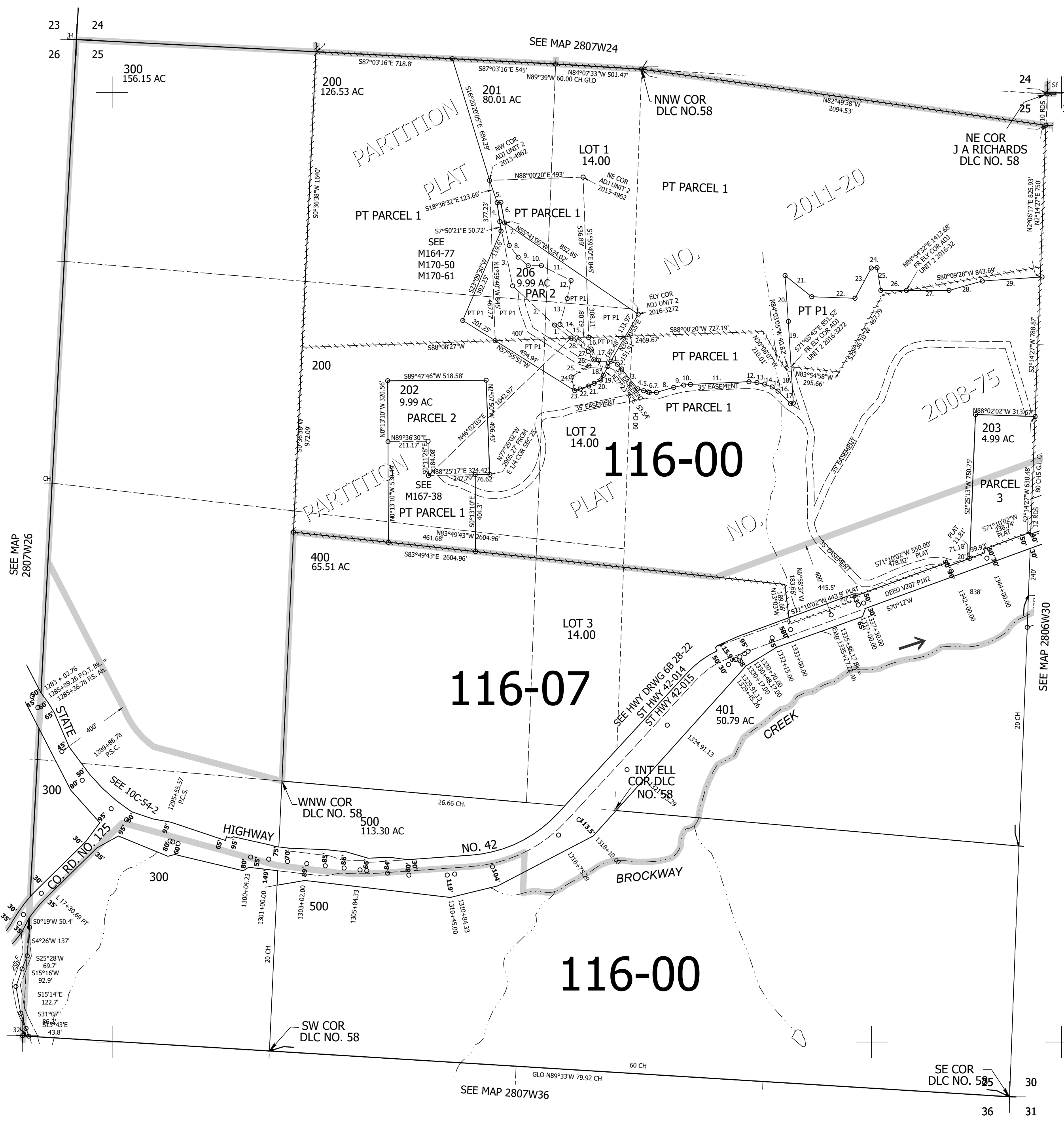
Date Exported 2024-06-27

280725

CANCELLED NOS:  
204 205 207  
208 THRU 213  
100

- PARCEL 206
1. N51°41'43"W 110.44'
  2. N46°56'46"W 302.6'
  3. N11°22'25"W 345.52'
  4. N7°50'21"W 100.56'
  5. N85°40'00"E 20'
  6. S10°00'00"E 110'
  7. S11°50'18"E 121.44'
  8. S37°16'33"E 77.31'
  9. S49°46'58"E 69.63'
  10. EAST 69.55'
  11. S63°26'06"E 174.38'
  12. S12°06'09"W 97.39'
  13. S15°31'09"W 141.54'
  14. S51°41'43"E 113.87'
  15. N88°00'20"E 30.92'
  16. S51°41'43"E 94.62'
  17. S34°31'39"E 71.34'
  18. S16°43'35"E 83.34'
  19. S27°52'08"W 27.64'
  20. S63°34'00"W 39.4'
  21. S63°18'31"W 31.64'
  22. S70°48'20"W 47.4'
  23. S73°00'00"W 30'
  24. N15°00'00"W 75'
  25. N58°28'07"E 109.8'
  26. N38°52'25"E 41.65'
  27. N34°31'39"W 52.2'
  28. N51°41'43"W 115.19'

- PARCEL 200
1. S64°26'36"E 37.38'
  2. S42°19'45"E 34.04'
  3. S38°55'03"E 134.24'
  4. S72°15'05"E 32.5'
  5. S73°44'58"E 24.04'
  6. S74°55'40"E 7.58'
  7. S89°14'38"E 37.05'
  8. N73°45'20"E 95.12'
  9. N77°13'20"E 53.63'
  10. N83°48'58"E 35.71'
  11. N87°24'47"E 308.66'
  12. S84°30'47"E 42'
  13. S78°31'51"E 41.85'
  14. S69°02'30"E 42.18'
  15. S54°52'37"E 37.76'
  16. S44°55'22"E 94.07'
  17. N76°19'57"E 14.96'
  18. N3°30'31"W 191.93'
  19. N3°30'31"W 239.47'
  20. N49°07'36"W 241.72'
  21. S51°32'11"E 179.77'
  22. S88°01'56"E 227.57'
  23. N28°21'21"E 181.09'
  24. N86°55'50"E 30.4'
  25. S9°24'02"E 121.42'
  26. N89°56'45"E 130.32'
  27. N89°56'45"E 228.79'
  28. N74°24'38"E 182.26'
  29. N86°06'59"E 303.73'
  - FR WHICH A 5/8" I.R. BEARS N86°06'59"E 8.44'



280725

Lower Right:  
123°27'33"W 43°5'48"N  
4131120E 535089N ft