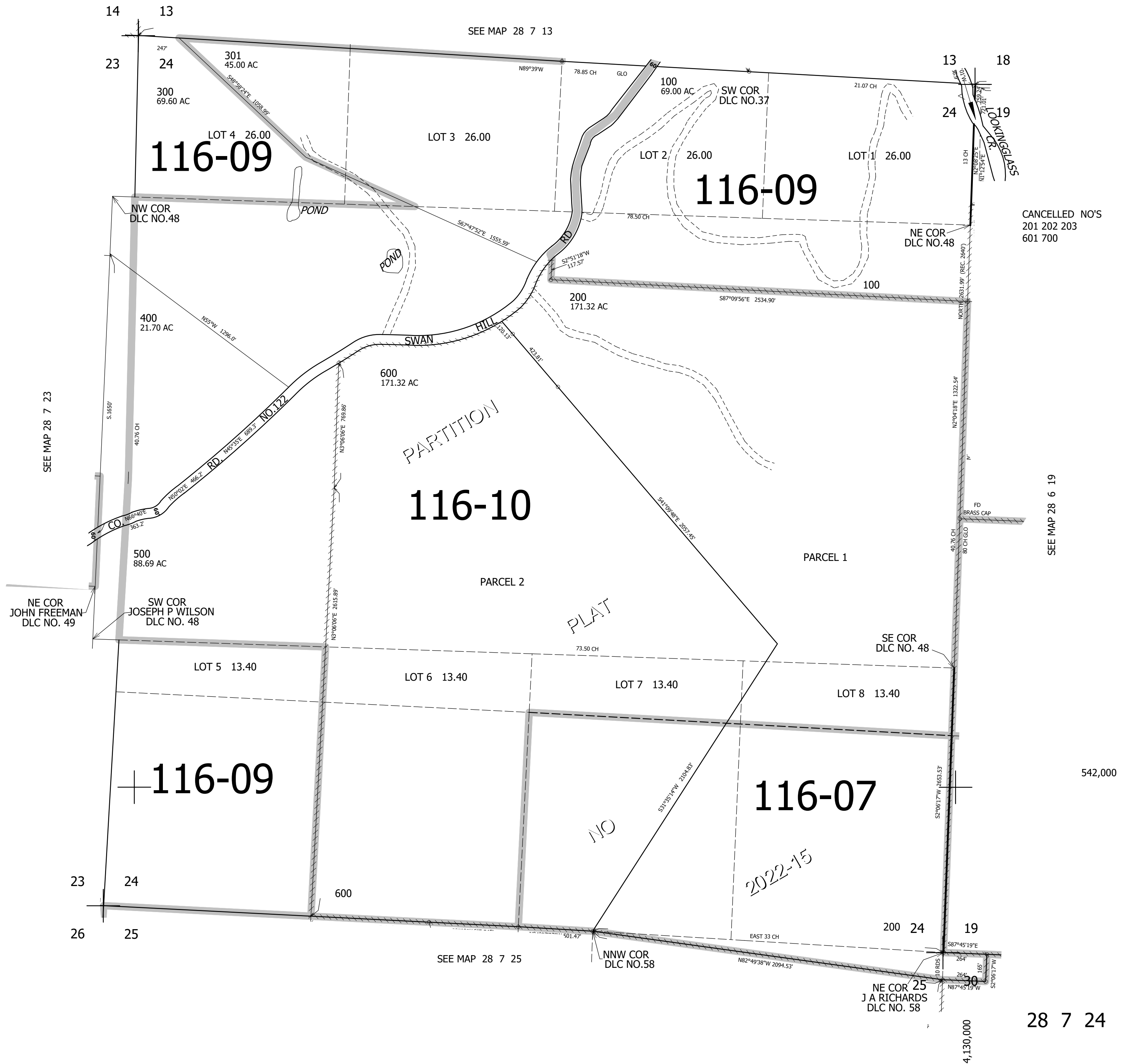


THIS MAP WAS PREPARED FOR ASSESSMENT PURPOSE ONLY.

SEC.24 T.28S. R.7W. W.M.
DOUGLAS COUNTY
1" = 400'

REVISED ON
3-31-22

28 7 24



CANCELLED NO'S
201 202 203
601 700

SEE MAP 28 6 19

542,000

28 7 24

4,130,000