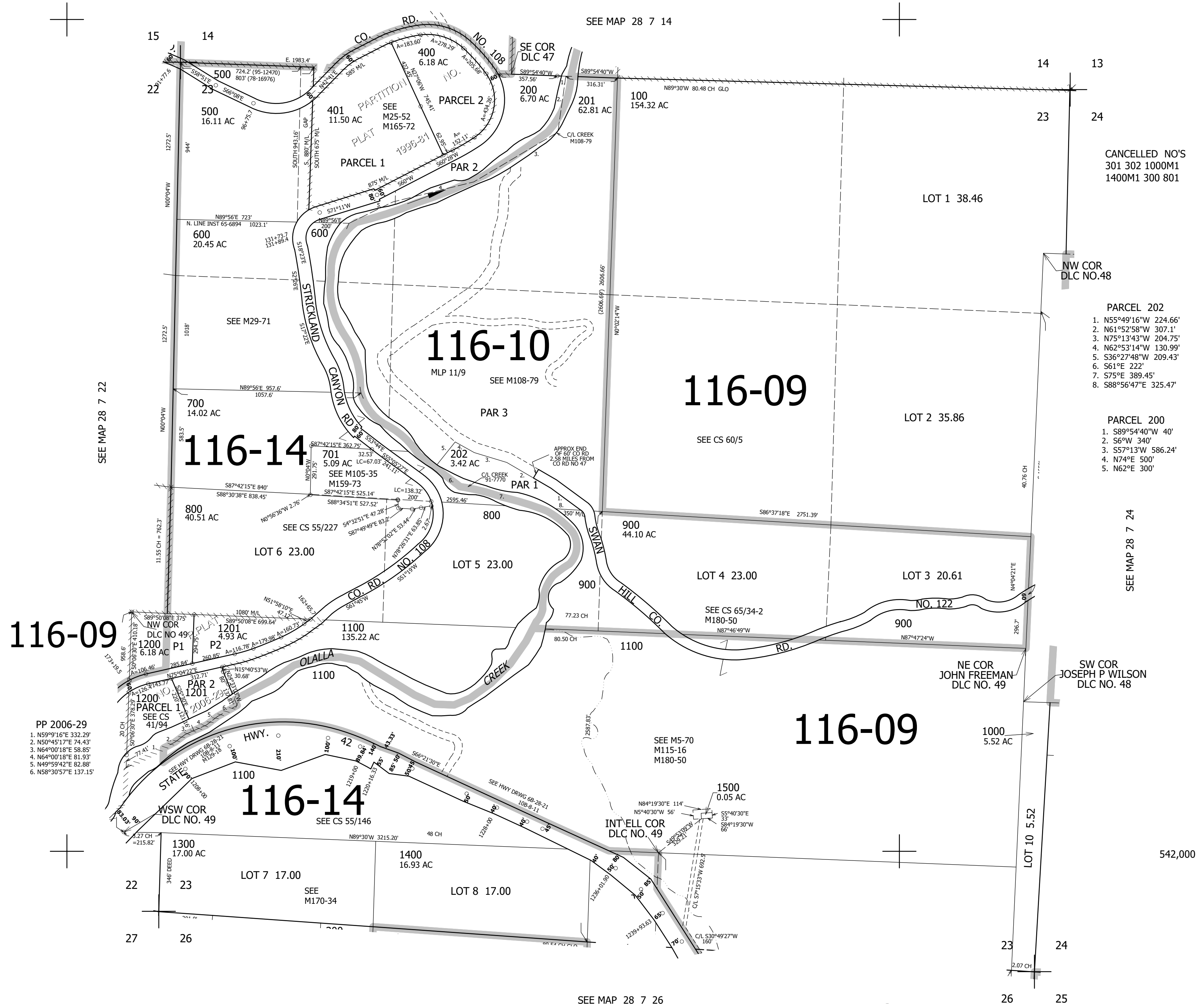


THIS MAP WAS PREPARED FOR ASSESSMENT PURPOSE ONLY.

SEC.23 T.28S. R.7W. W.M. DOUGLAS COUNTY
1" = 400'

REVISED ON 9-6-17

28 7 23



CANCELLED NO'S
301 302 1000M1
1400M1 300 801

PARCEL 202
1. N55°49'16"W 224.66'
2. N61°52'58"W 307.1'
3. N75°13'43"W 204.75'
4. N62°53'14"W 130.99'
5. S36°27'48"W 209.43'
6. S61°E 222'
7. S75°E 389.45'
8. S88°56'47"E 325.47'

PARCEL 200
1. S89°54'40"W 40'
2. S6°W 340'
3. S57°13'W 586.24'
4. N74°E 500'
5. N62°E 300'

116-09

116-14

116-10

116-09

116-09

116-14

PP 2006-29
1. N59°9'16"E 332.29'
2. N50°45'17"E 74.43'
3. N64°00'18"E 58.85'
4. N64°00'18"E 81.93'
5. N49°59'42"E 82.88'
6. N58°30'57"E 137.15'

SEE MAP 28 7 26

4,124,000

28 7 23