

SEC.19 T.28S. R.7W. W.M.  
SEC.19 T.28S. R.7 1/2W. W.M.  
DOUGLAS COUNTY

REVISED ON

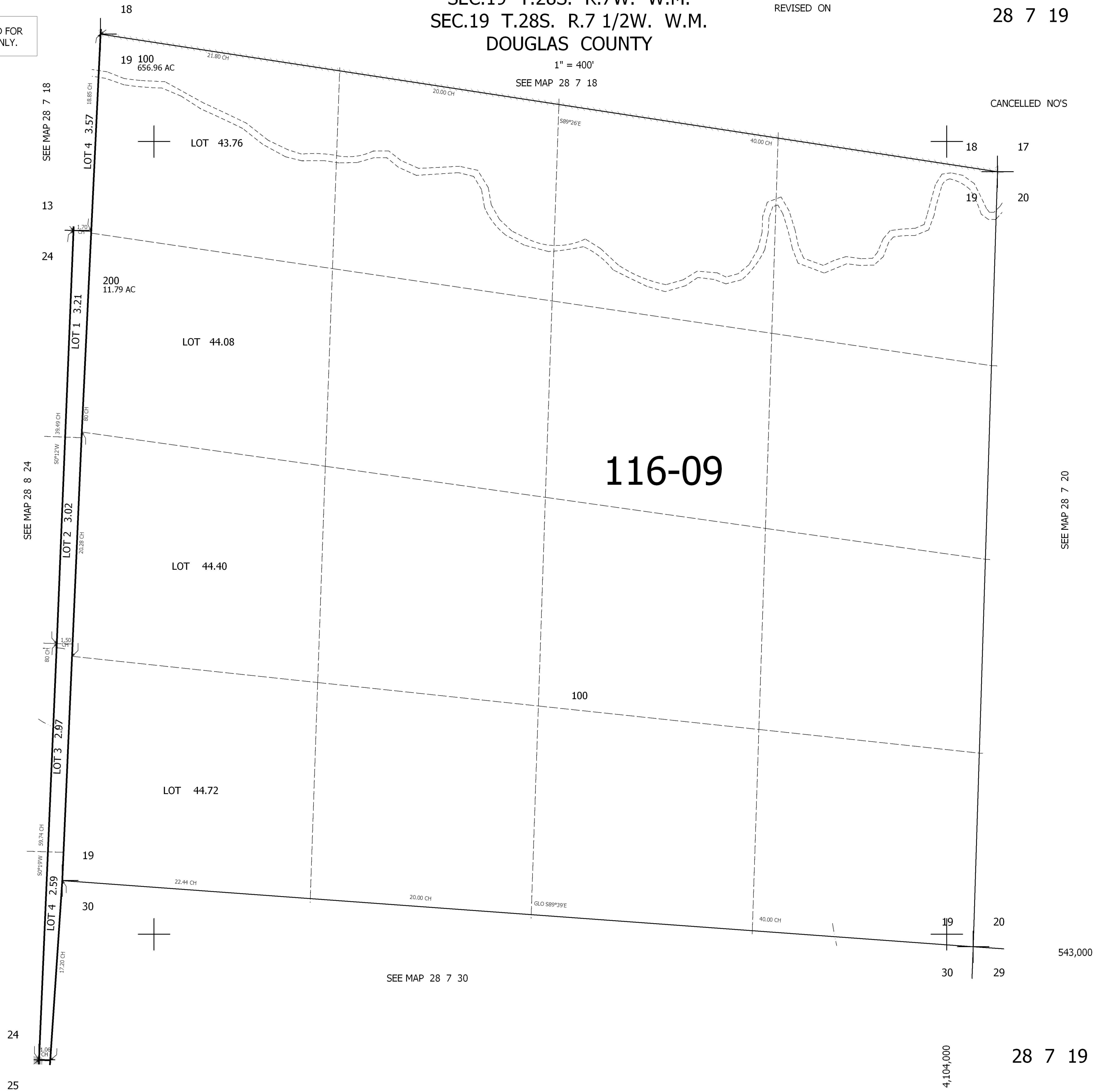
28 7 19

THIS MAP WAS PREPARED FOR  
ASSESSMENT PURPOSE ONLY.

1" = 400'

SEE MAP 28 7 18

CANCELLED NO'S



116-09

100

SEE MAP 28 7 30

543,000

4,104,000

28 7 19