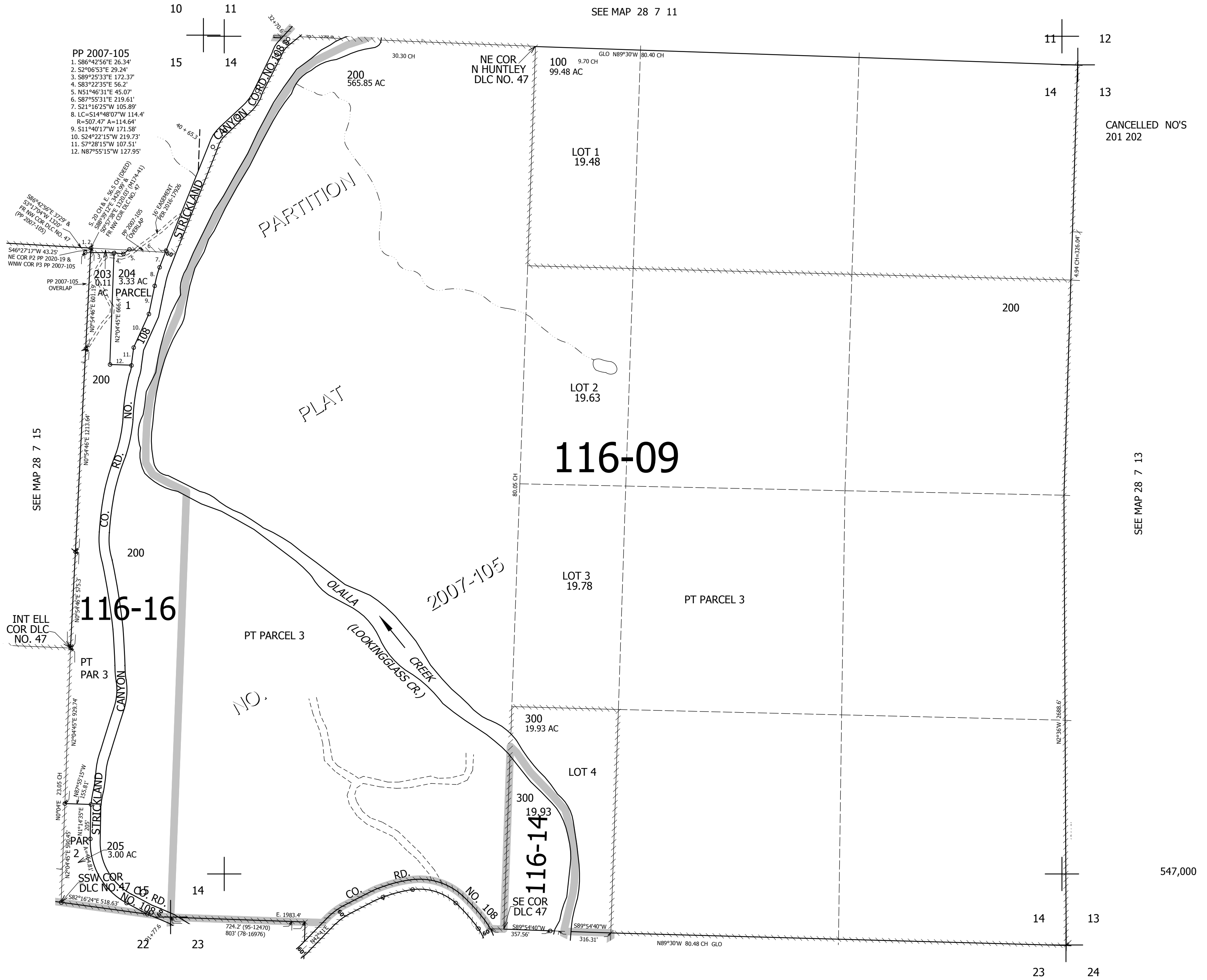


THIS MAP WAS PREPARED FOR
ASSESSMENT PURPOSE ONLY.

SEC.14 T.28S. R.7W. W.M.
DOUGLAS COUNTY
1" = 400'

REVISED ON
6-10-20

28 7 14



PP 2007-105
1. S86°42'56"E 26.34'
2. S2°06'53"E 29.24'
3. S89°25'33"E 172.37'
4. S83°22'35"E 56.2'
5. N51°46'31"E 45.07'
6. S87°55'31"E 219.61'
7. S21°16'25"W 105.89'
8. LC=S14°48'07"W 114.4'
R=507.47 A=114.64'
9. S11°40'17"W 171.58'
10. S24°22'15"W 219.73'
11. S7°28'15"W 107.51'
12. N87°55'15"W 127.95'

SEE MAP 28 7 11

CANCELLED NO'S
201 202

SEE MAP 28 7 15

SEE MAP 28 7 13

116-09

116-16

116-14

SEE MAP 28 7 23

547,000

4,120,000

28 7 14