

THIS MAP WAS PREPARED FOR ASSESSMENT PURPOSE ONLY.

Upper Left:
123°32'49"W 43°9'32"N
4108488E 558577N ft

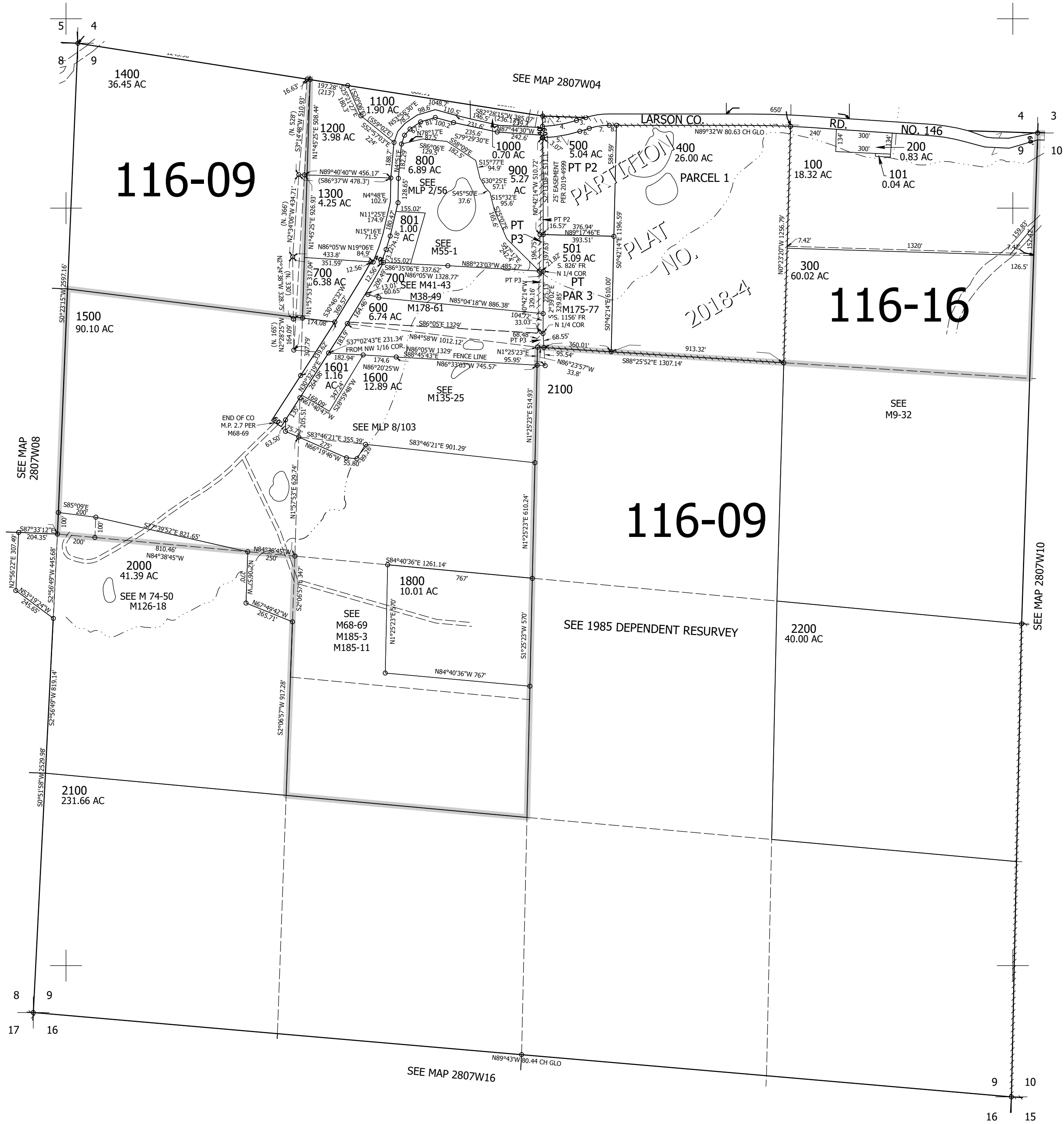
SEC.09 T.28S. R.07W. W.M.
DOUGLAS COUNTY
1" = 400'

Date Exported 2025-09-02

280709

- TAXLOT 500
1. N0°42'14"W 55.45'
 2. S89°59'00"W 230.86'
 3. S70°38'42"W 51.73'
 4. A=184.44' R=718.8'
LC=N77°59'45"E 183.93'
 5. A=202.38 R=778.8'
LC=N78°05'22"E 201.81'
 6. N70°38'42"E 55.14'
 7. A=104.04 R=343.44'
LC=N79°19'24"E 103.64'
 8. N88°00'06"E 38.18'

CANCELLED NOS:
1602 1701 503
505 504 502
701 1501 1502
1603 2001 1700
1900 1801



280709

Lower Right:
123°31'W 43°8'26"N
4116337E 551622N ft