

THIS MAP WAS PREPARED FOR ASSESSMENT PURPOSE ONLY.

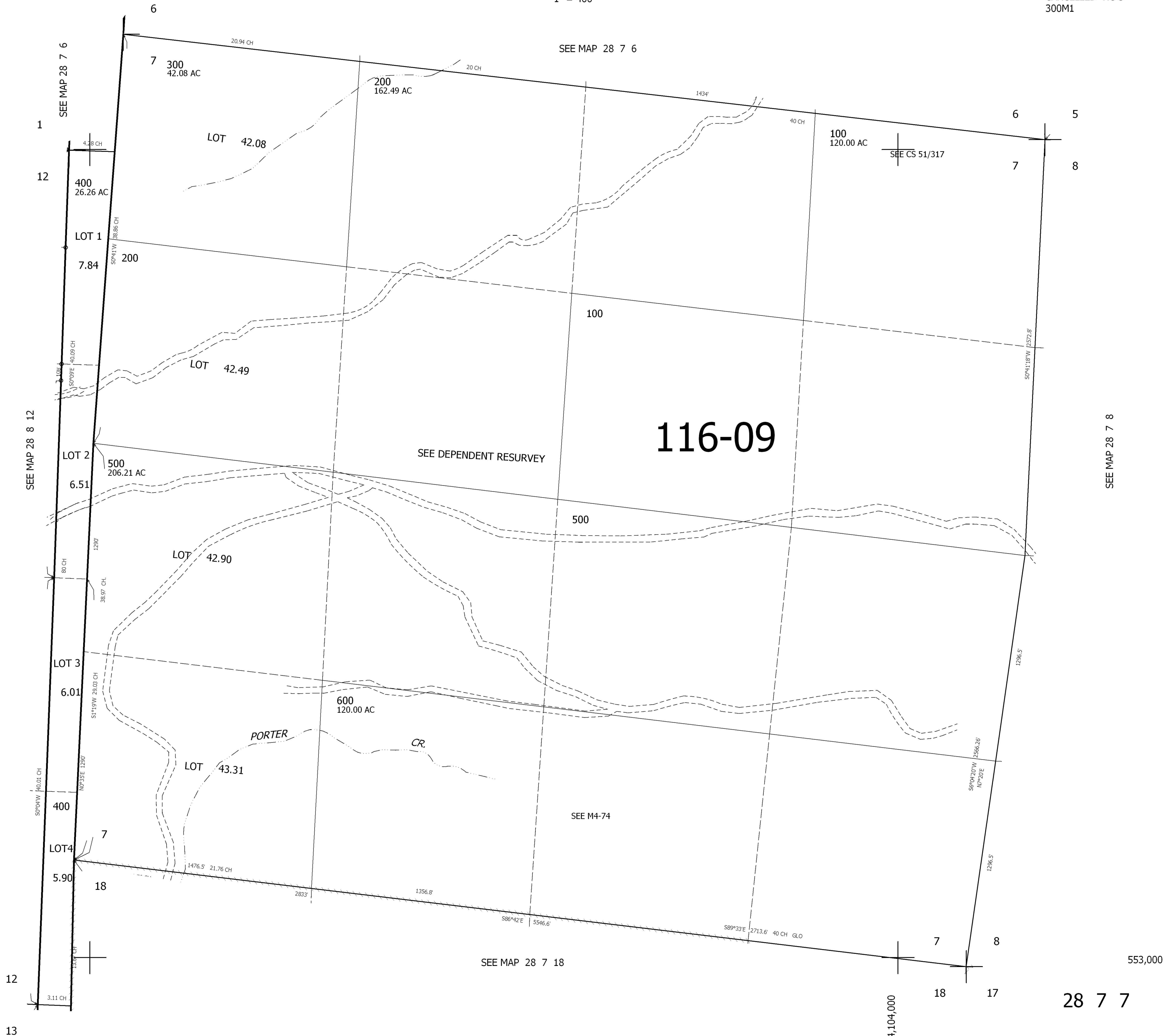
SEC.7 T.28S. R.7W. W.M.  
SEC.7 T.28S. R.7 1/2W. W.M.  
DOUGLAS COUNTY

1" = 400'

REVISED ON

28 7 7

CANCELLED NO'S  
300M1



SEE MAP 28 8 12

SEE MAP 28 7 6

SEE MAP 28 7 8

SEE MAP 28 7 18

4,104,000

553,000

28 7 7