

THIS MAP WAS PREPARED FOR ASSESSMENT PURPOSE ONLY.

SEC.6 T.28S. R.7W. W.M.
SEC.6 T.28S. R.7 1/2W. W.M.
DOUGLAS COUNTY

REVISED ON
12-18-96

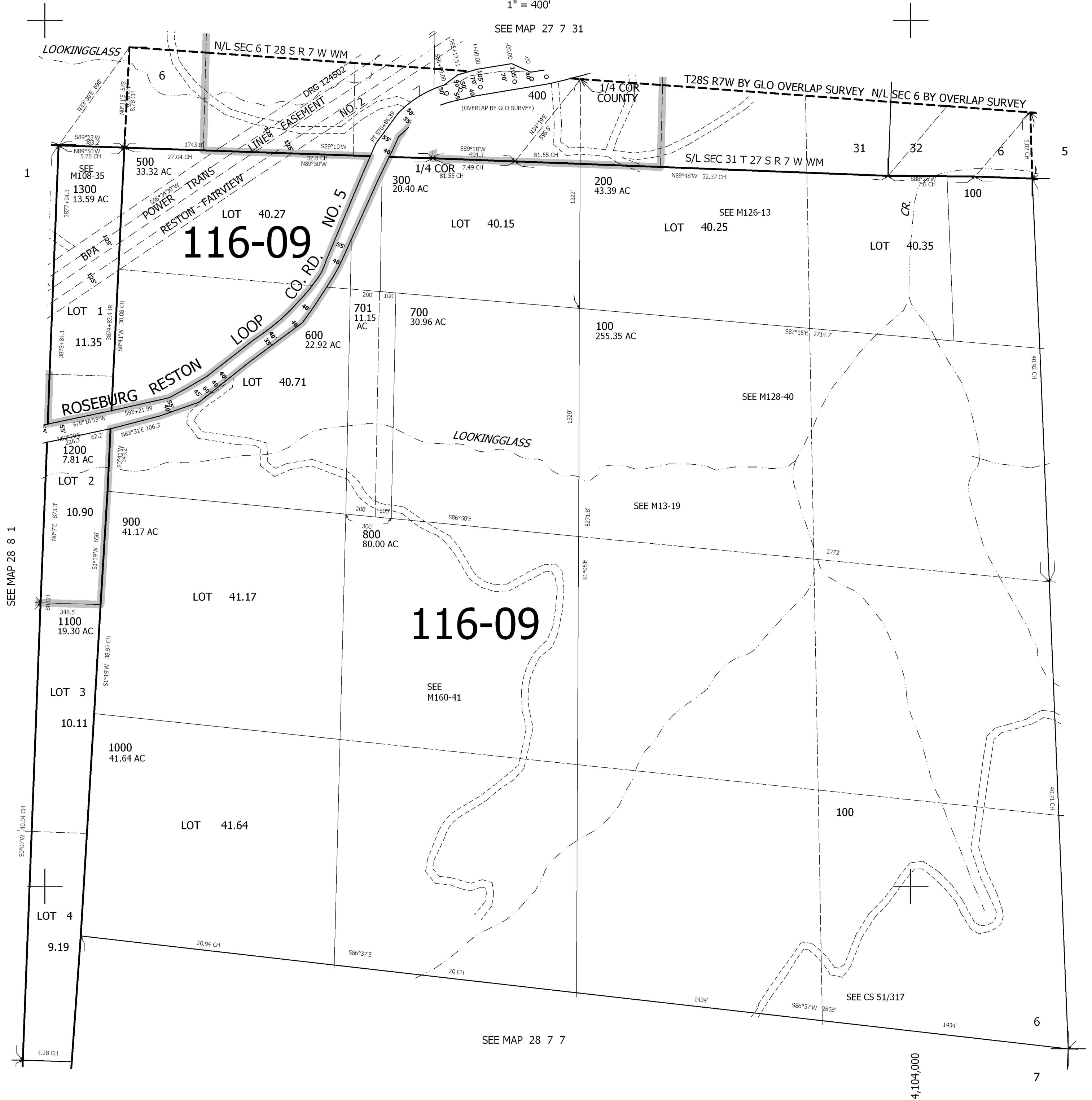
28 7 6

1" = 400'

SEE MAP 27 7 31

CANCELLED NO'S
400 900M1 1000M1

36 31



SEE MAP 28 8 1

SEE MAP 28 7 5

116-09

SEE M160-41

SEE MAP 28 7 7

4,104,000

559,000

28 7 6