

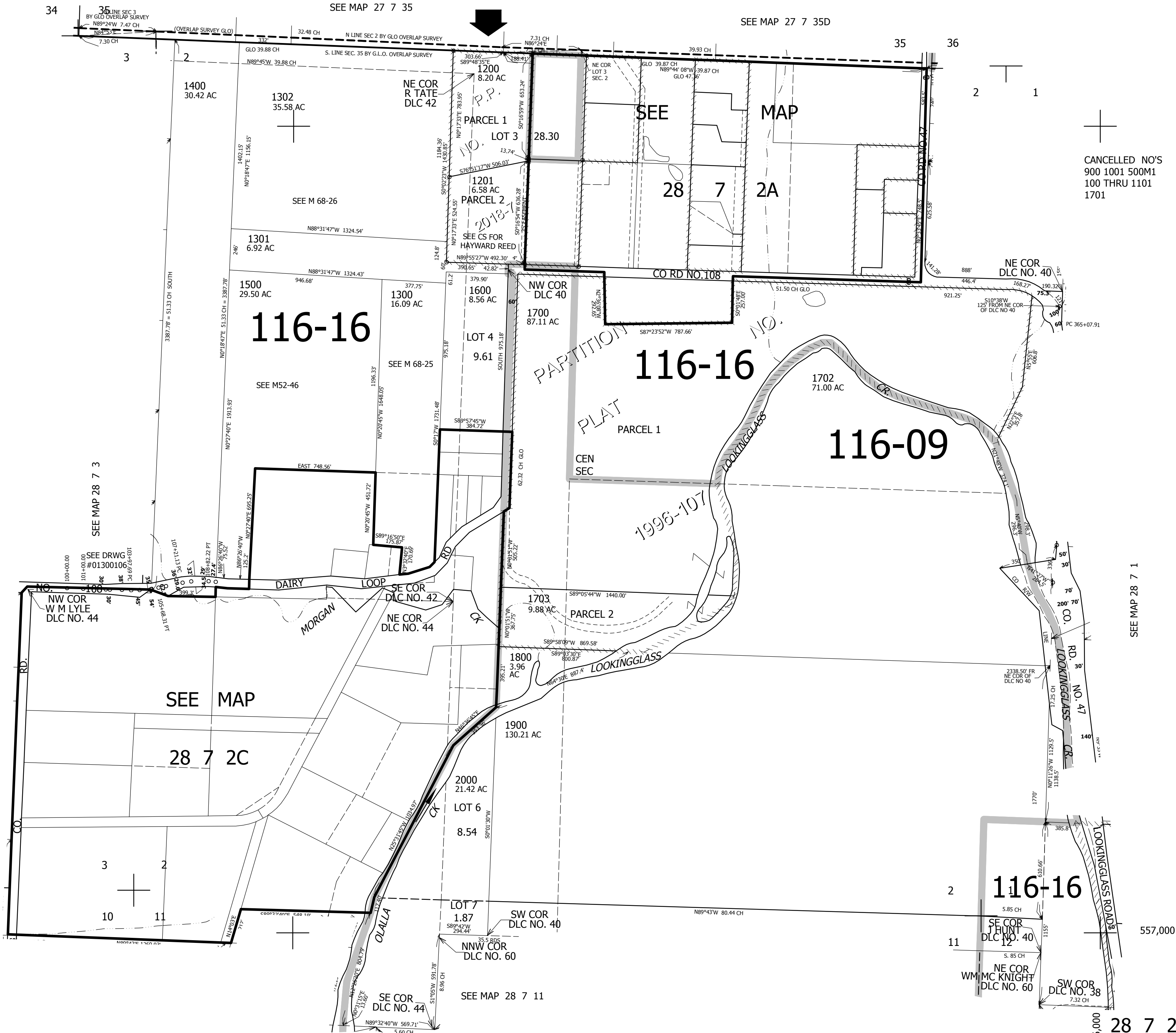
THIS MAP WAS PREPARED FOR ASSESSMENT PURPOSE ONLY.

SEC.2 T.28S. R.7W. W.M. DOUGLAS COUNTY

1" = 400'

REVISED ON 3-7-18

28 7 2 & INDEX



CANCELLED NO'S
900 1001 500M1
100 THRU 1101
1701

SEE MAP 28 7 1

28 7 2 & INDEX
4,126,000