

THIS MAP WAS PREPARED FOR ASSESSMENT PURPOSE ONLY.

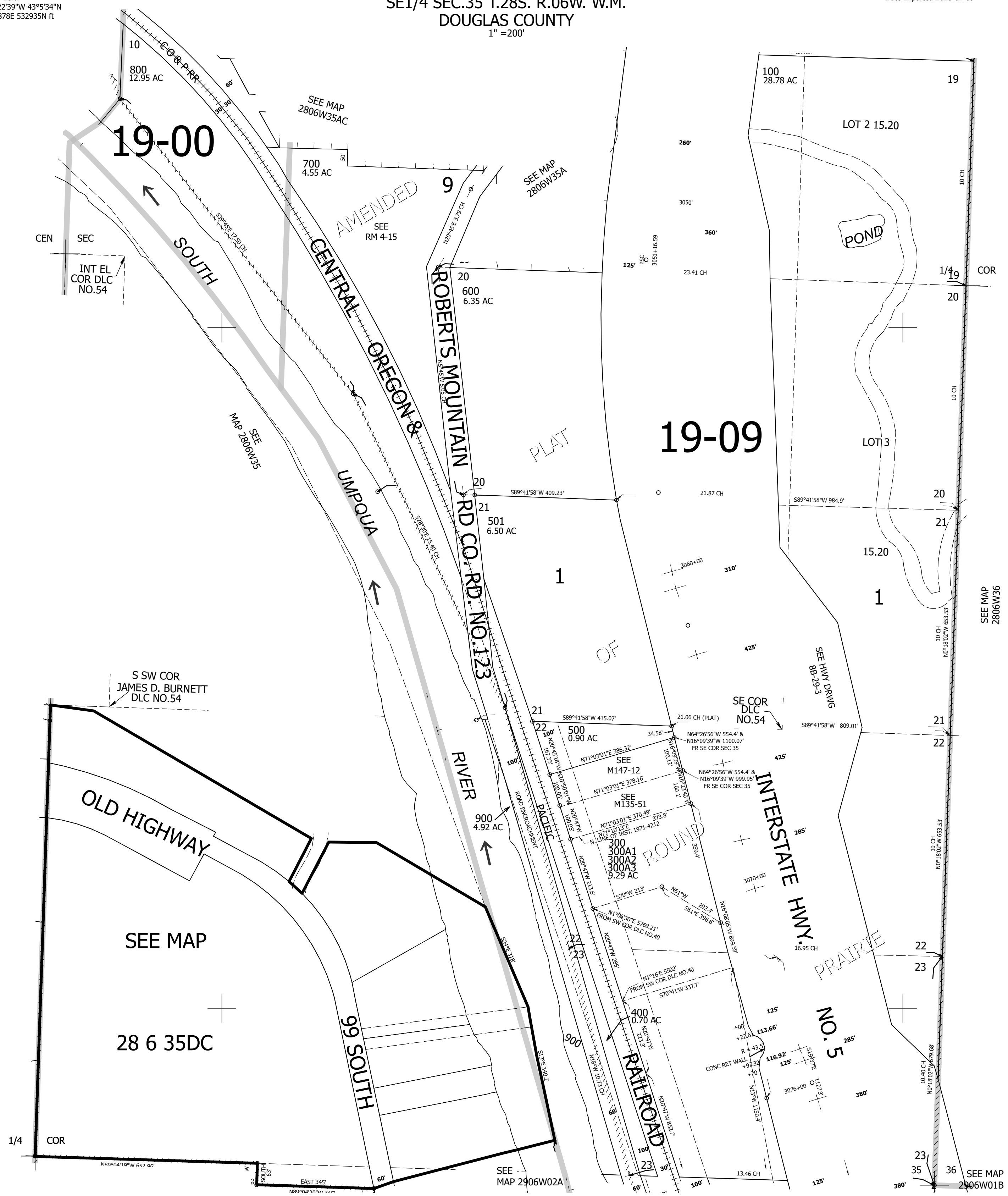
Upper Left:  
123°22'39"W 43°5'34"N  
4152878E 532935N ft

SE1/4 SEC.35 T.28S. R.06W. W.M.  
DOUGLAS COUNTY  
1" = 200'

Date Exported 2025-04-09

280635D  
& INDEX

CANCELLED NOS:  
502 200



SEE MAP  
2806W36

SEE MAP  
2806W01B

Lower Right:  
123°21'44"W 43°5'1"N  
4156803E 529457N ft

280635D  
& INDEX