

THIS MAP WAS PREPARED FOR ASSESSMENT PURPOSE ONLY.

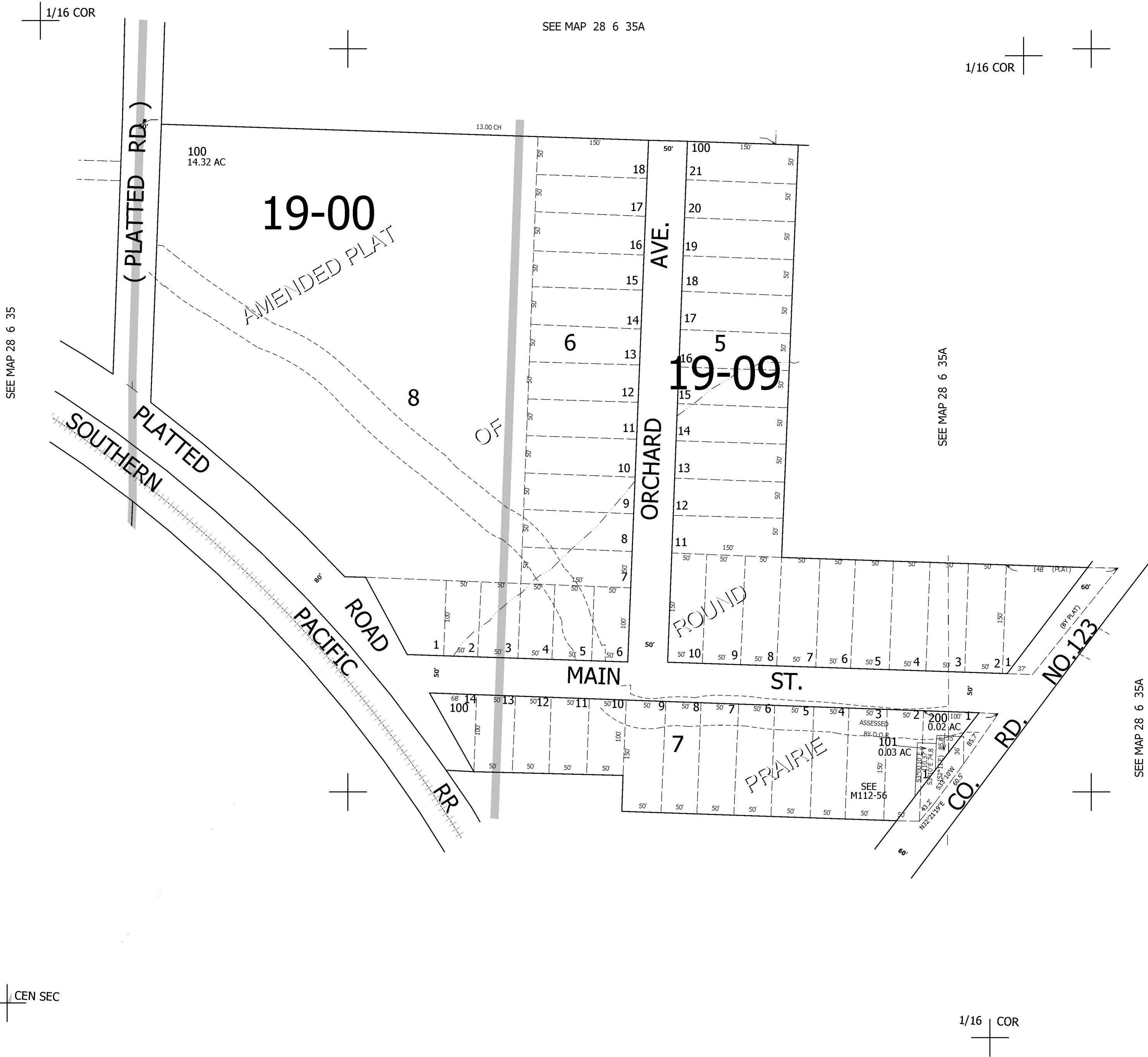
SW1/4 NE1/4 SEC.35 T.28S. R.6W. W.M.
DOUGLAS COUNTY

1" = 100'

REVISED ON
5-17-95

28 6 35AC

CANCELLED NO'S



SEE MAP 28 6 35

SEE MAP 28 6 35A

SEE MAP 28 6 35A

SEE MAP 28 6 35A

SEE MAP 28 6 35D

532,500

4,154,000

28 6 35AC