

THIS MAP WAS PREPARED FOR ASSESSMENT PURPOSE ONLY.

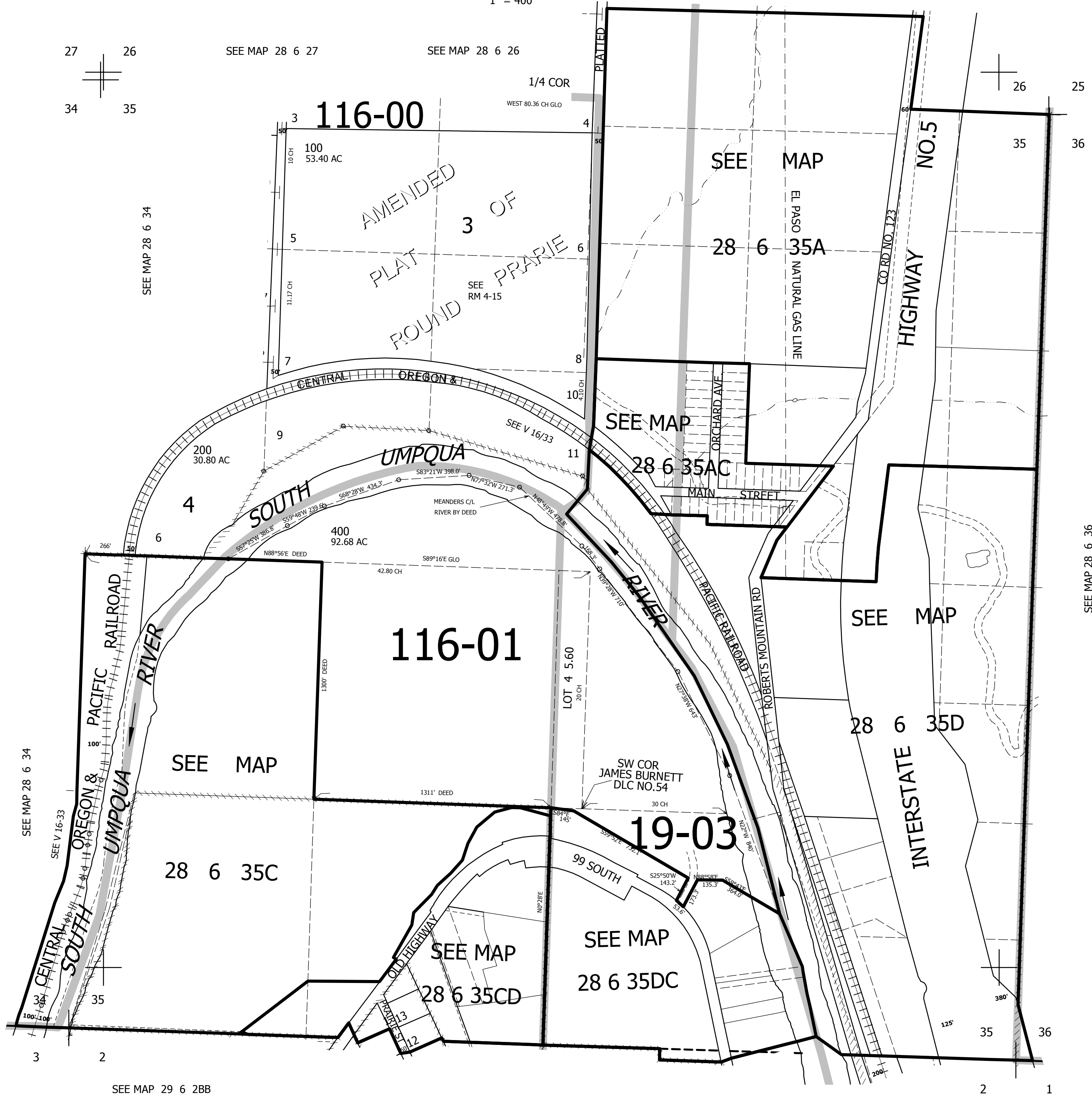
SEC.35 T.28S. R.6W. W.M.
DOUGLAS COUNTY

1" = 400'

REVISED ON
4-21-16

SEE MAP 28 6 26D

28 6 35
& INDEX



CANCELLED NO'S
300

SEE MAP 28 6 36

530,000

28 6 35
& INDEX

4,151,000

SEE MAP 29 6 2BB

SEE MAP 29 6 2BA

SEE MAP 29 6 2A