

THIS MAP WAS PREPARED FOR ASSESSMENT PURPOSE ONLY.

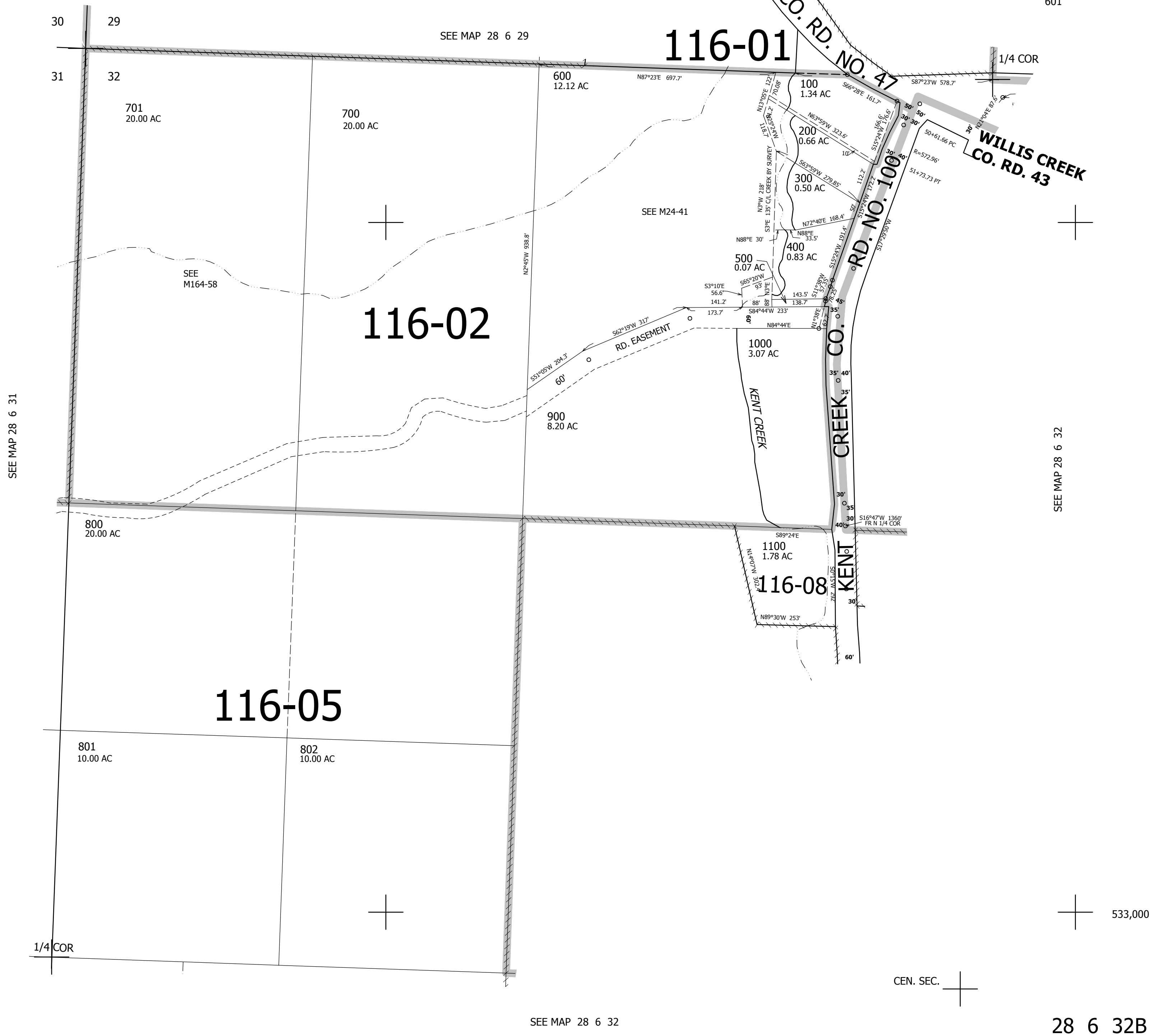
REVISED ON 3-13-98

28 6 32B

NW1/4 SEC.32 T.28S. R.6W. W.M. DOUGLAS COUNTY

1" = 200'

CANCELLED NO'S 601



4,138,000

28 6 32B

SEE MAP 28 6 32