

THIS MAP WAS PREPARED FOR ASSESSMENT PURPOSE ONLY.

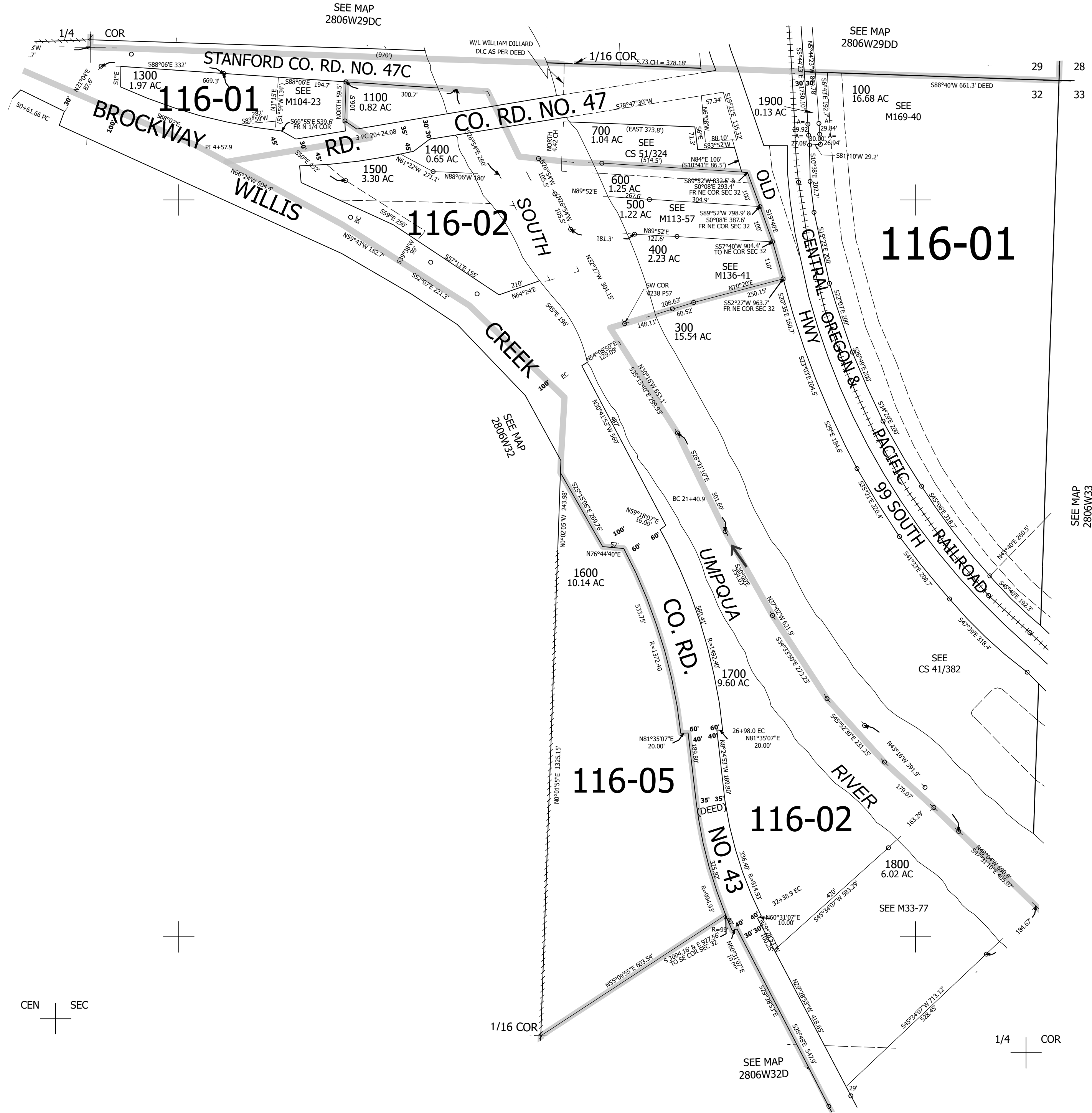
Upper Left:
123°26'13"W 43°5'56"N
4137049E 535743N ft

NE1/4 SEC.32 T.28S. R.06W. W.M.
DOUGLAS COUNTY
1" = 200'

Date Exported 2024-03-20

280632A
& INDEX

CANCELLED NOS:
200 800 900
1000 1200



CEN SEC

280632A
& INDEX

Lower Right:
123°25'19"W 43°5'23"N
4140973E 532266N ft