

THIS MAP WAS PREPARED FOR ASSESSMENT PURPOSE ONLY.

SEC.31 T.28S. R.6W. W.M.
DOUGLAS COUNTY

REVISED ON
3-13-98

28 6 31

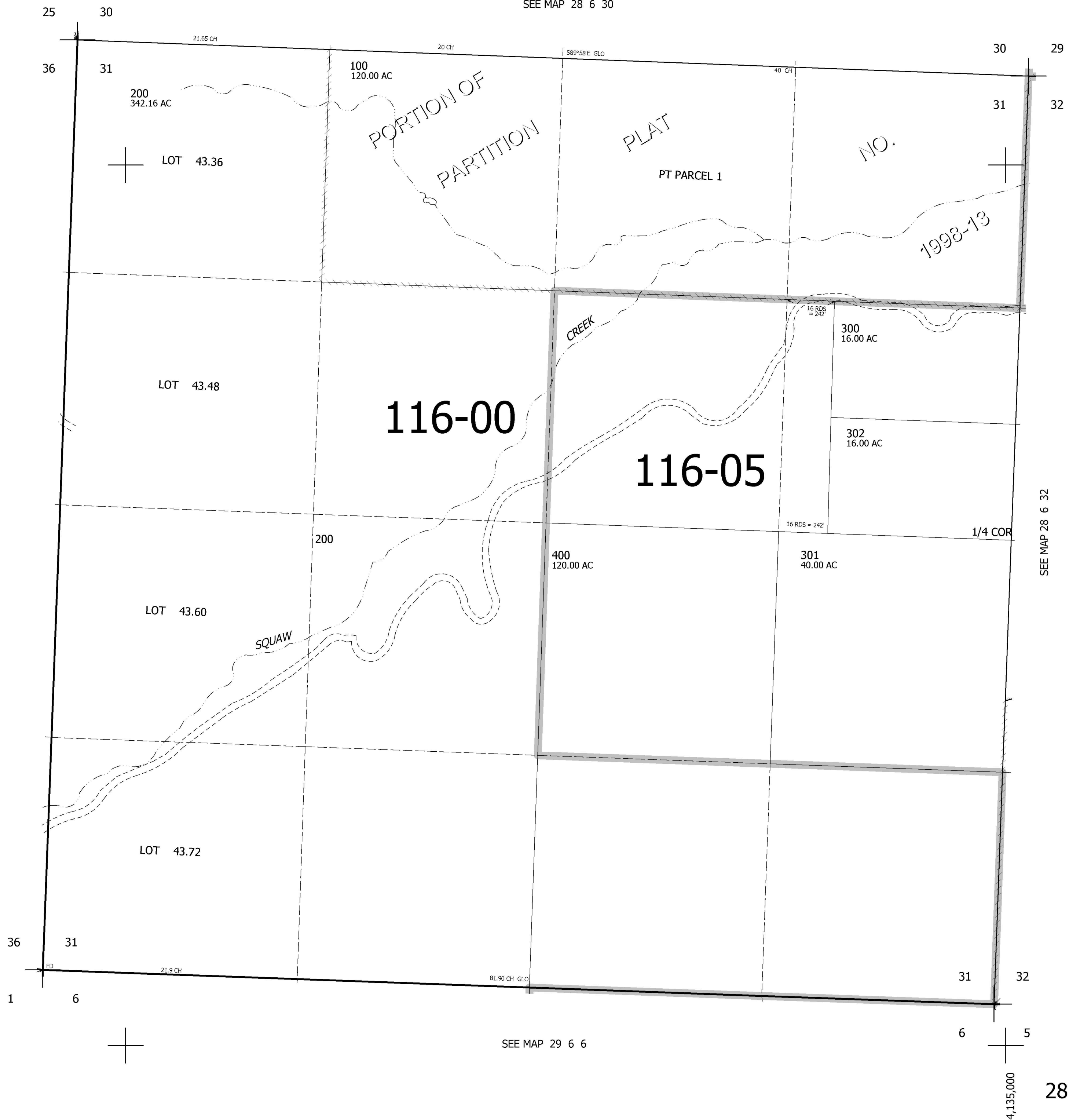
1" = 400'

CANCELLED NO'S

SEE MAP 28 6 30

SEE MAP 28 7 36

SEE MAP 28 6 32



530,000

28 6 31

4,135,000