

SE1/4 SE1/4 SEC.29 T.28S. R.6W. W.M.
DOUGLAS COUNTY

28 6 29DD

THIS MAP WAS PREPARED FOR
ASSESSMENT PURPOSE ONLY.

1" = 100'

REVISED ON
6-15-15

CANCELLED NO'S
900 2700M1

SEE MAP 28 6 29DA

SEE
M169-40

2800
1.13 AC

600
5.45 AC

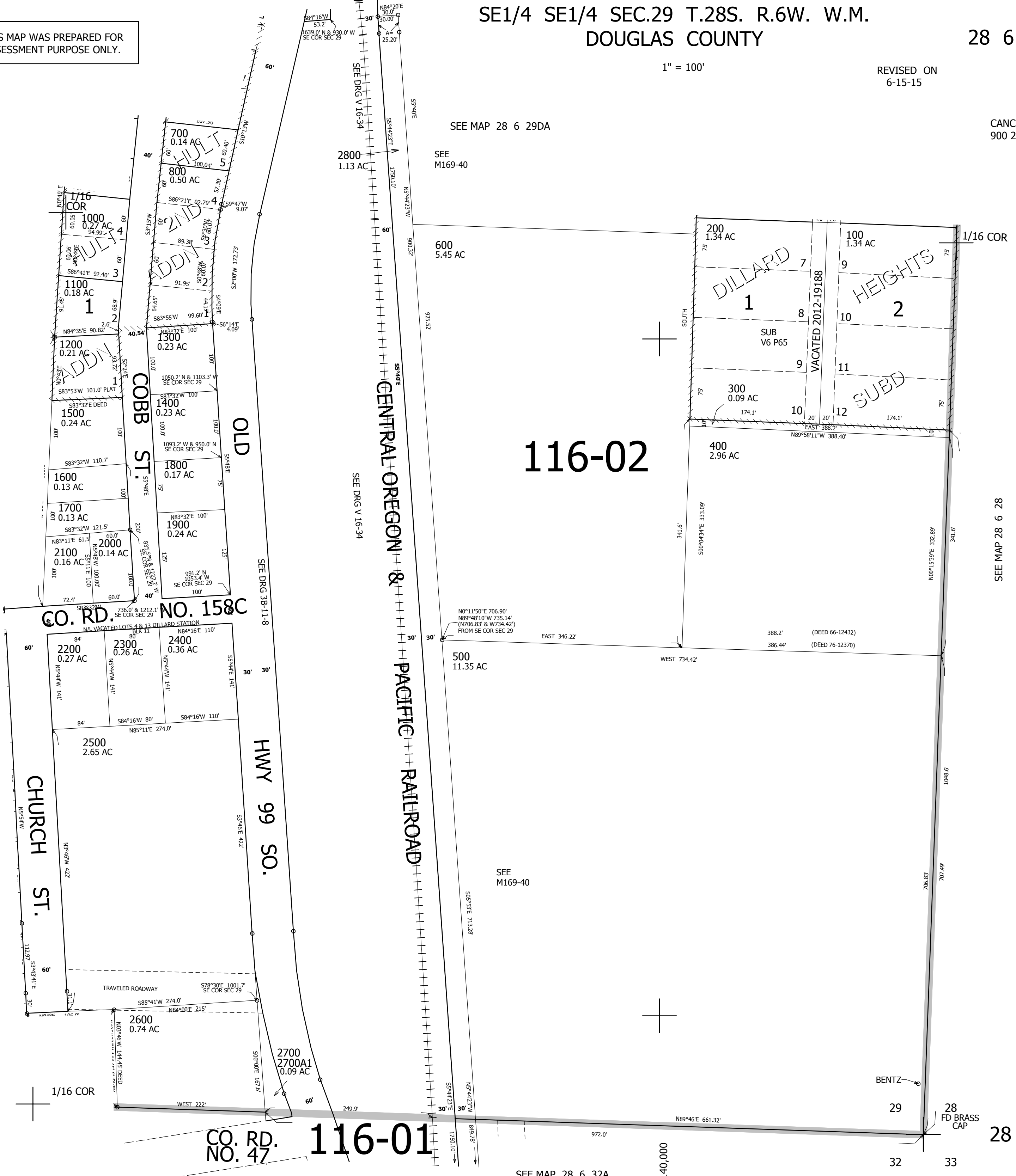
116-02

500
11.35 AC

SEE
M169-40

SEE MAP 28 6 29DC

SEE MAP 28 6 28



CO. RD. NO. 158C

CHURCH ST.

HWY 99 SO.

CENTRAL OREGON & PACIFIC RAILROAD

DILLARD

HEIGHTS

CO. RD. NO. 47

116-01

28 6 29DD

SEE MAP 28 6 32A

4,140,000

32 33