

THIS MAP WAS PREPARED FOR ASSESSMENT PURPOSE ONLY.

REVISED ON 12-30-98

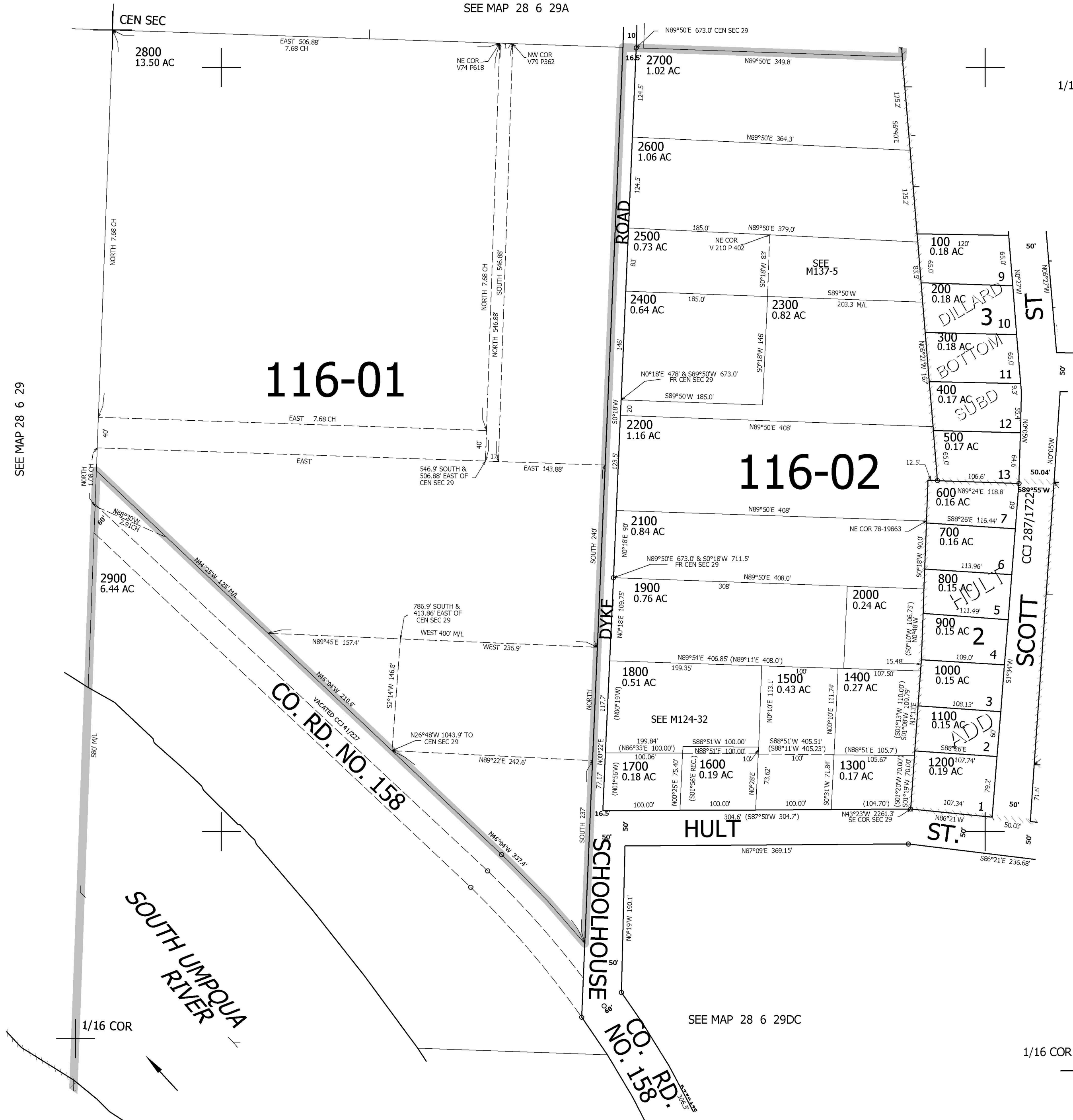
28 6 29DB

NW1/4 SE1/4 SEC.29 T.28S. R.6W. W.M. DOUGLAS COUNTY

1" = 100'

CANCELLED NO'S

SEE MAP 28 6 29A



SEE MAP 28 6 29

SEE MAP 28 6 29DA

537,000

SEE MAP 28 6 29DC

4,139,000

28 6 29DB