

NE1/4 SE1/4 SEC.29 T.28S. R.6W. W.M.
DOUGLAS COUNTY
1" = 100'

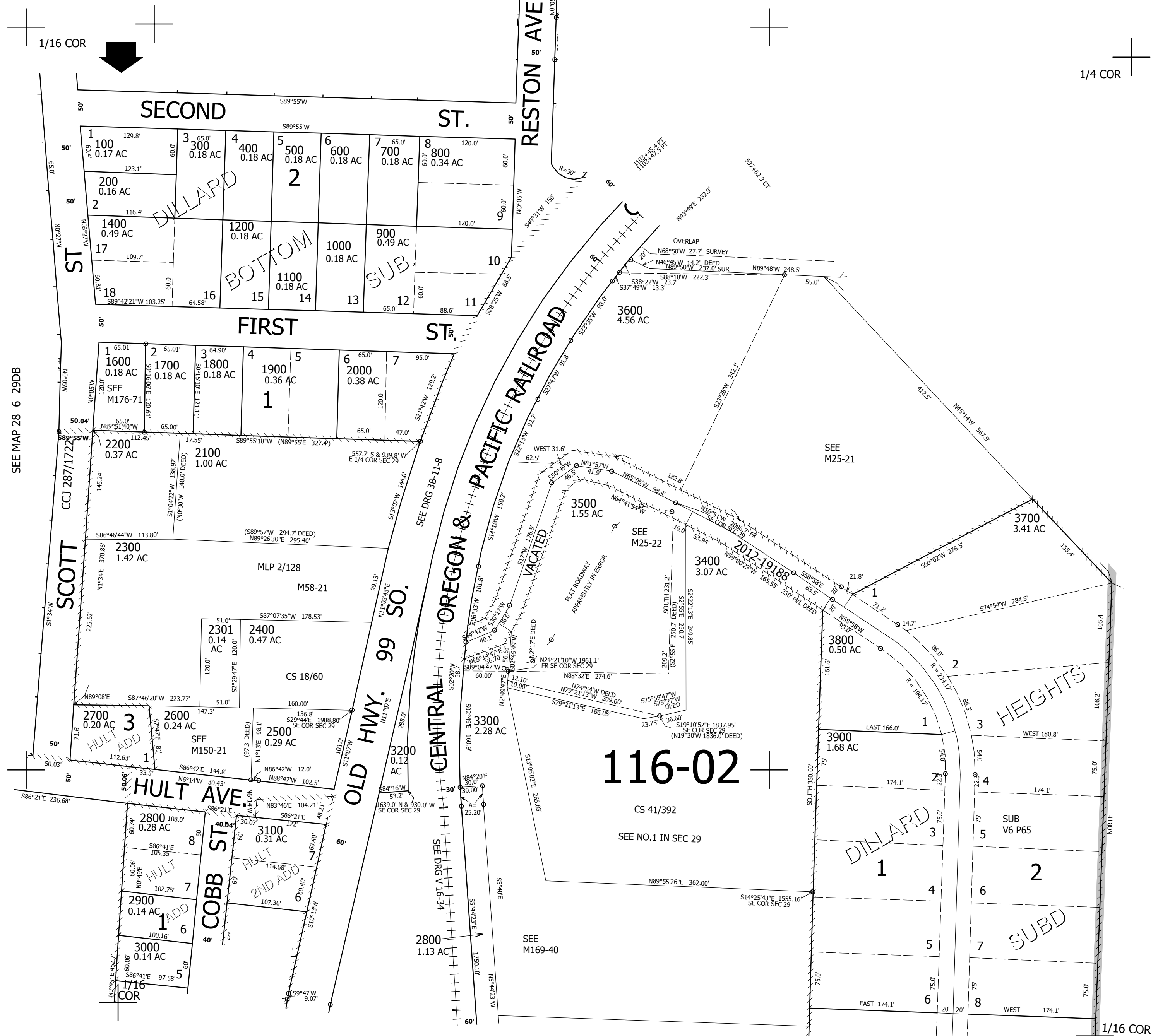
REVISED ON
12-7-12

28 6 29DA

THIS MAP WAS PREPARED FOR
ASSESSMENT PURPOSE ONLY.

CANCELLED NO'S
1300 1500

SEE MAP 28 6 29AD



SEE MAP 28 6 29DB

SEE MAP 28 6 28

537,000

SEE MAP 28 6 29DD

4,140,000

28 6 29DA