

THIS MAP WAS PREPARED FOR ASSESSMENT PURPOSE ONLY.

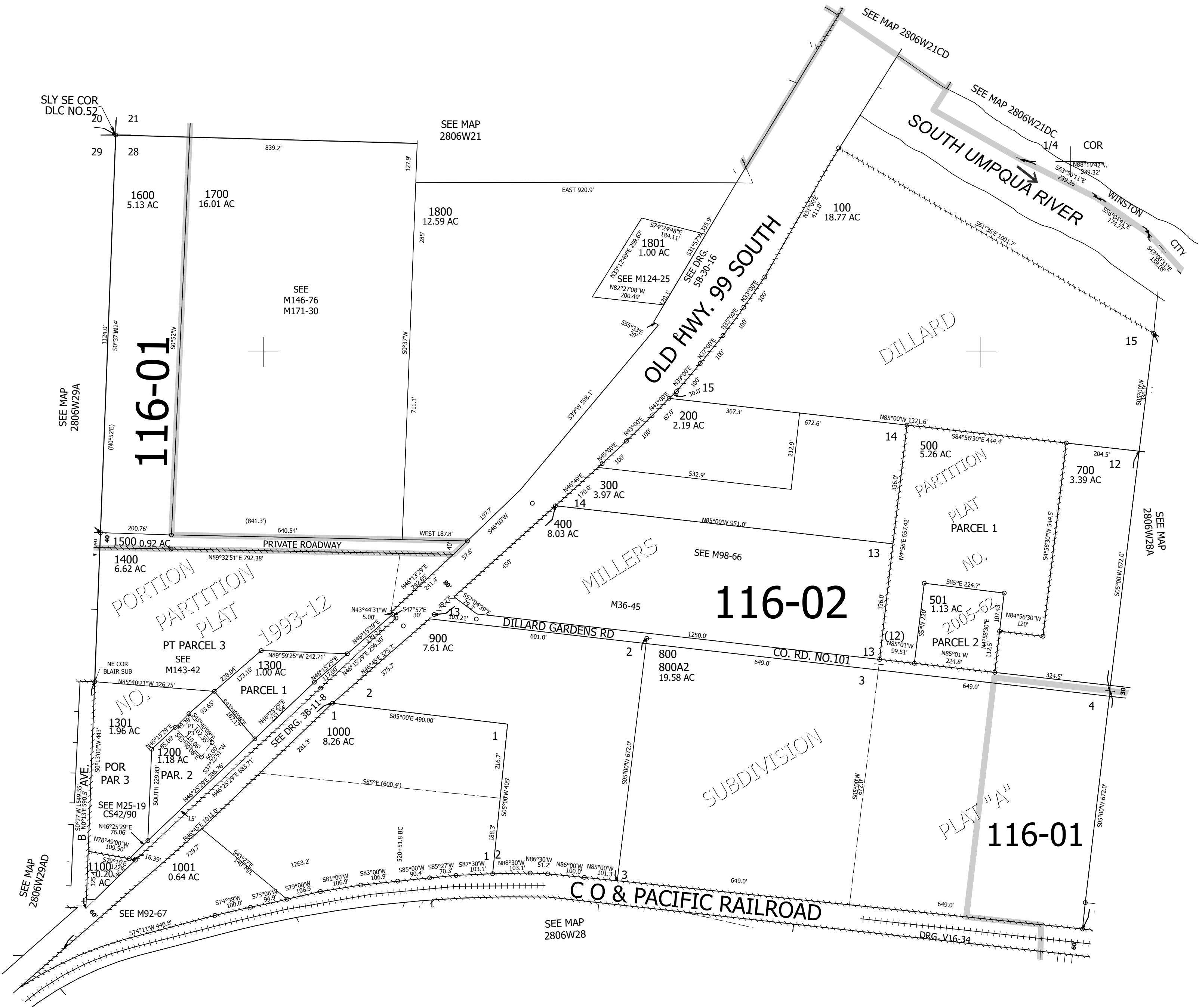
Upper Left:
123°25'36"W 43°6'52"N
4139976E 541314N ft

NW1/4 SEC.28 T.28S. R.06W. W.M.
DOUGLAS COUNTY
1" = 200'

Date Exported 2024-11-13

280628B
& INDEX

CANCELLED NOS:
1201 1202 1203
1302 1303 1304
600 1204 800A1



1/4 COR

CEN SEC

Lower Right:
123°24'42"W 43°6'19"N
4143901E 537837N ft

280628B
& INDEX