

THIS MAP WAS PREPARED FOR ASSESSMENT PURPOSE ONLY.

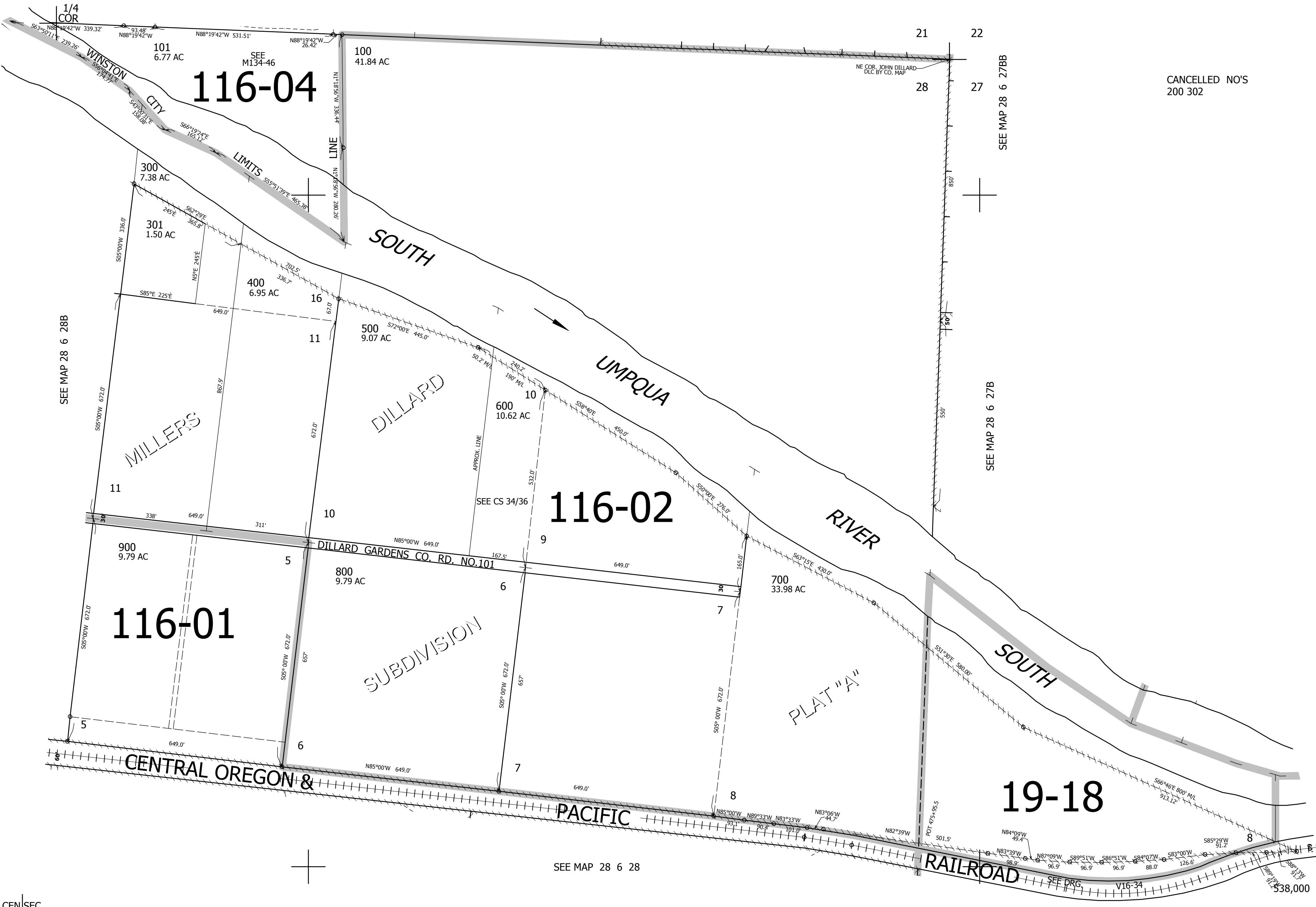
NE1/4 SEC.28 T.28S. R.6W. W.M.
DOUGLAS COUNTY

1" = 200'

REVISED ON
6-18-15

28 6 28A
WINSTON

SEE MAP 28 6 21DD



SEE MAP 28 6 27BB

CANCELLED NO'S
200 302

SEE MAP 28 6 27B

116-02

116-01

19-18

SEE MAP 28 6 28

CEN/SEC

1/4 COR

4,146,000

28 6 28A
WINSTON