

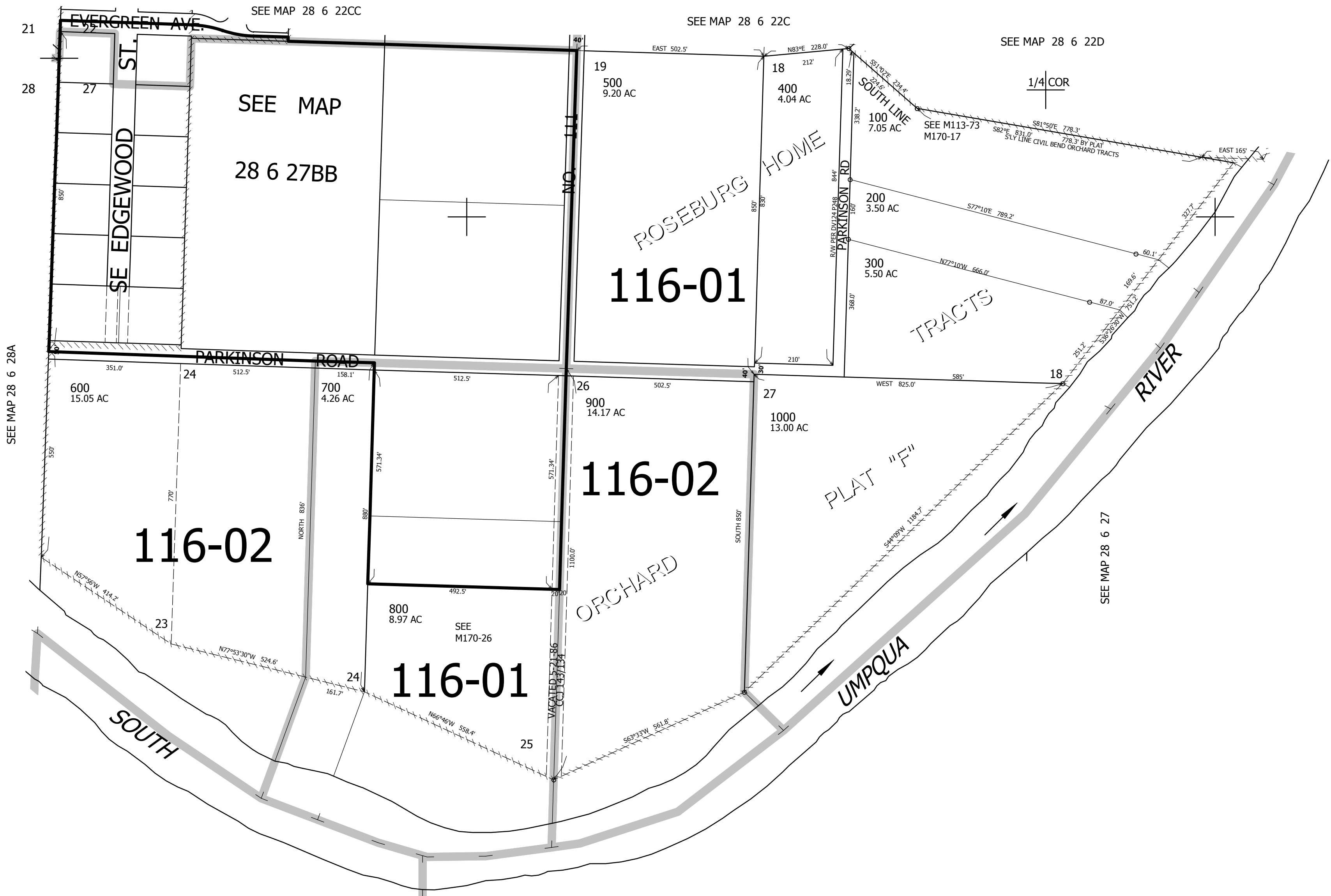
THIS MAP WAS PREPARED FOR ASSESSMENT PURPOSE ONLY.

NW1/4 SEC.27 T.28S. R.6W. W.M.
DOUGLAS COUNTY
1" = 200'

REVISED ON
3-14-16

28 6 27B
& INDEX

CANCELLED NO'S



SEE MAP 28 6 28A

SEE MAP 28 6 22CC

SEE MAP 28 6 22C

SEE MAP 28 6 22D

SEE MAP
28 6 27BB

116-01

116-02

116-02

116-01

SEE MAP 28 6 28A

SEE MAP 28 6 27

538,000

1/4 COR

CEN/SEC

4,147,000

28 6 27B
& INDEX