

THIS MAP WAS PREPARED FOR ASSESSMENT PURPOSE ONLY.

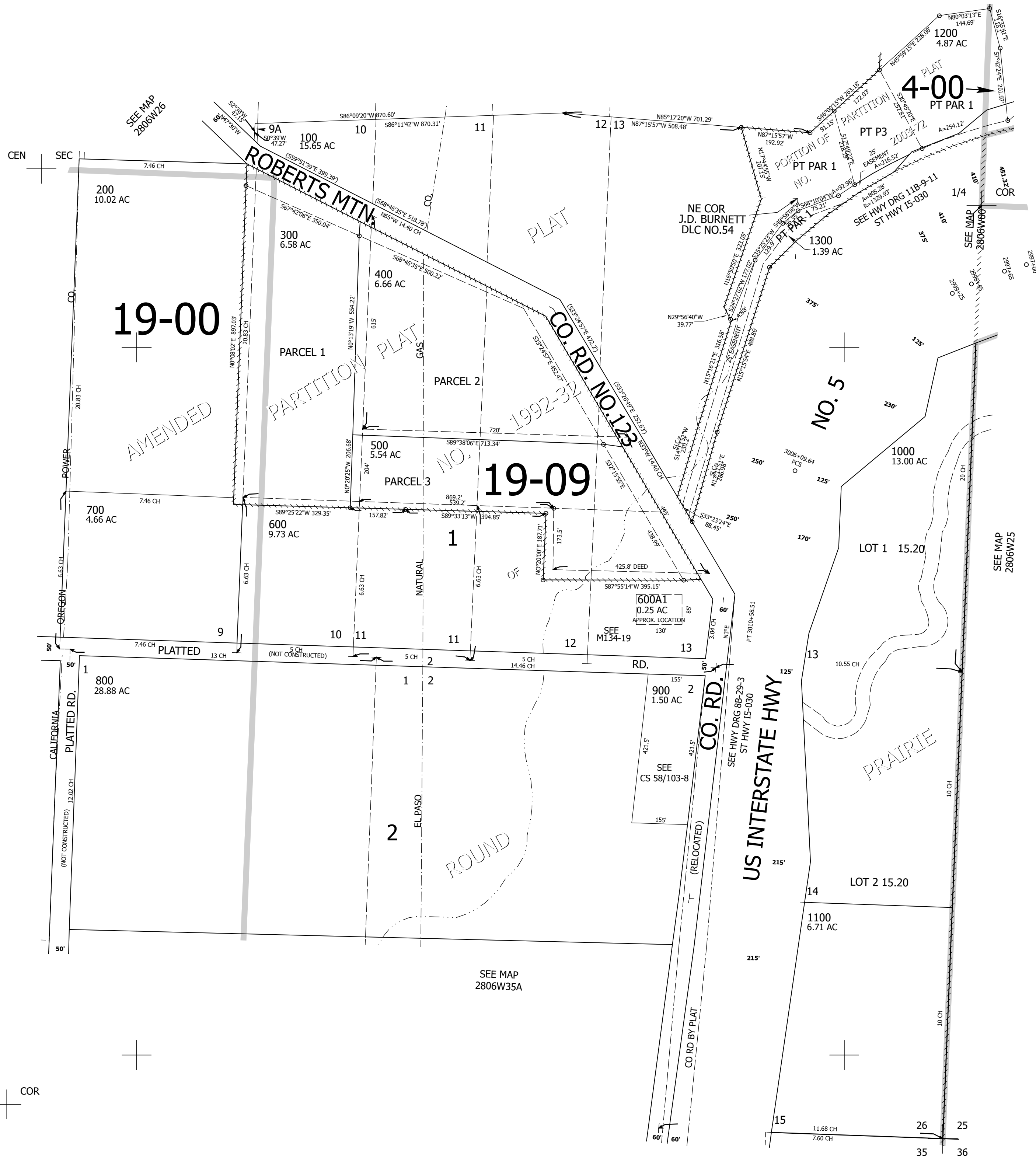
Upper Left:  
123°22'37"W 43°6'25"N  
4153175E 538093N ft

SE1/4 SEC.26 T.28S. R.06W. W.M.  
DOUGLAS COUNTY  
1" = 200'

Date Exported 2024-03-27

280626D

CANCELLED NOS:  
301 201 302  
201M1 501 601  
602 701 200M1



1/4 COR

280626D

Lower Right:  
123°21'43"W 43°5'52"N  
4157099E 534615N ft