

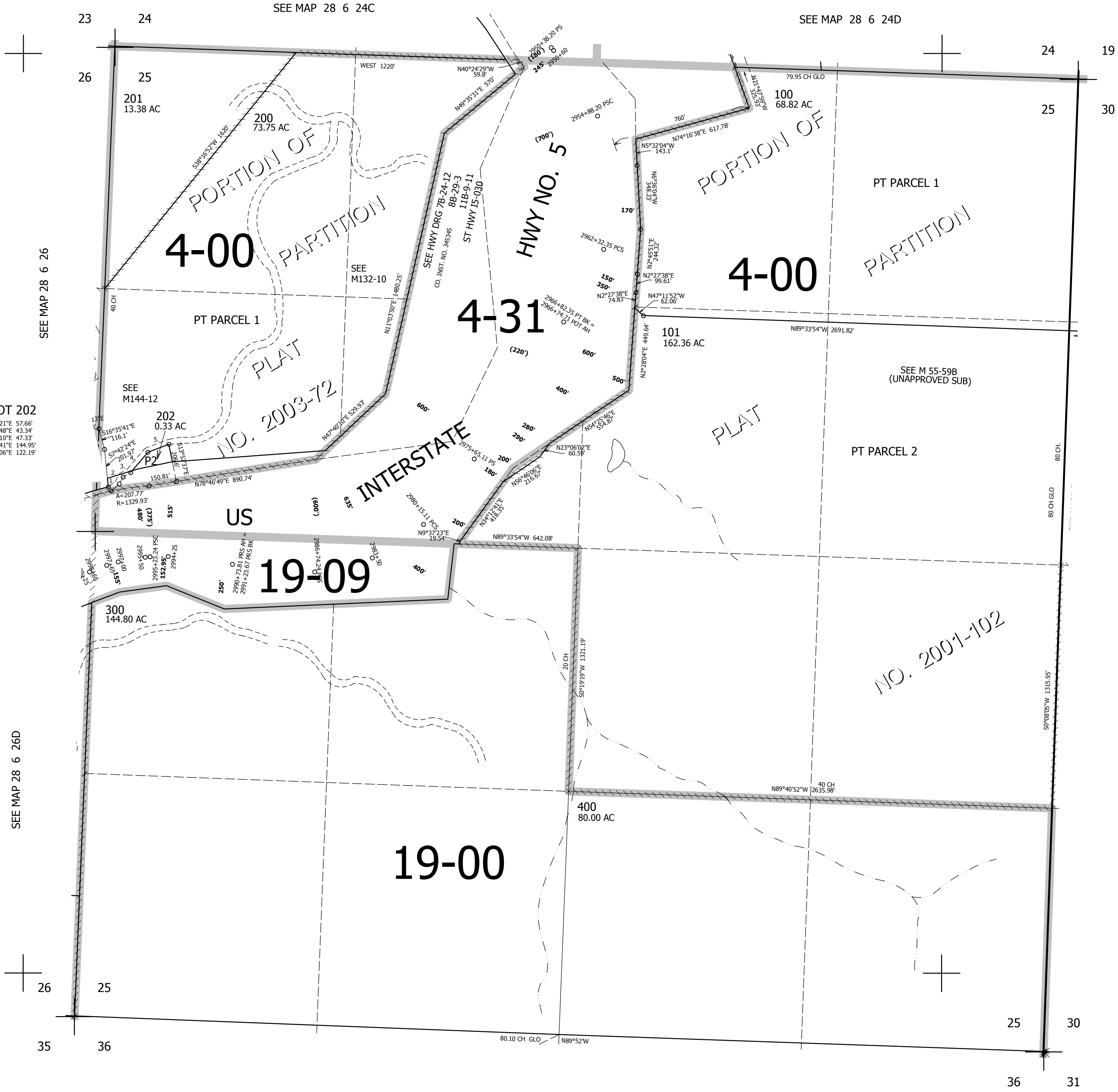
THIS MAP WAS PREPARED FOR ASSESSMENT PURPOSE ONLY.

SEC.25 T.28S. R.6W. W.M. DOUGLAS COUNTY

REVISED ON 7-31-18

28 6 25

1" = 400'



CANCELLED NO'S 203

SEE MAP 28 5 30

535,000

28 6 25

4,161,000

SEE MAP 28 6 36

SEE MAP 28 6 26D

SEE MAP 28 6 26

SEE MAP 28 6 24C

SEE MAP 28 6 24D

- TAXLOT 202
1. N46°10'21"E 57.66'
 2. N27°11'48"E 43.34'
 3. N57°12'10"E 47.33'
 4. N37°47'41"E 144.95'
 5. N66°48'06"E 122.19'