

THIS MAP WAS PREPARED FOR ASSESSMENT PURPOSE ONLY.

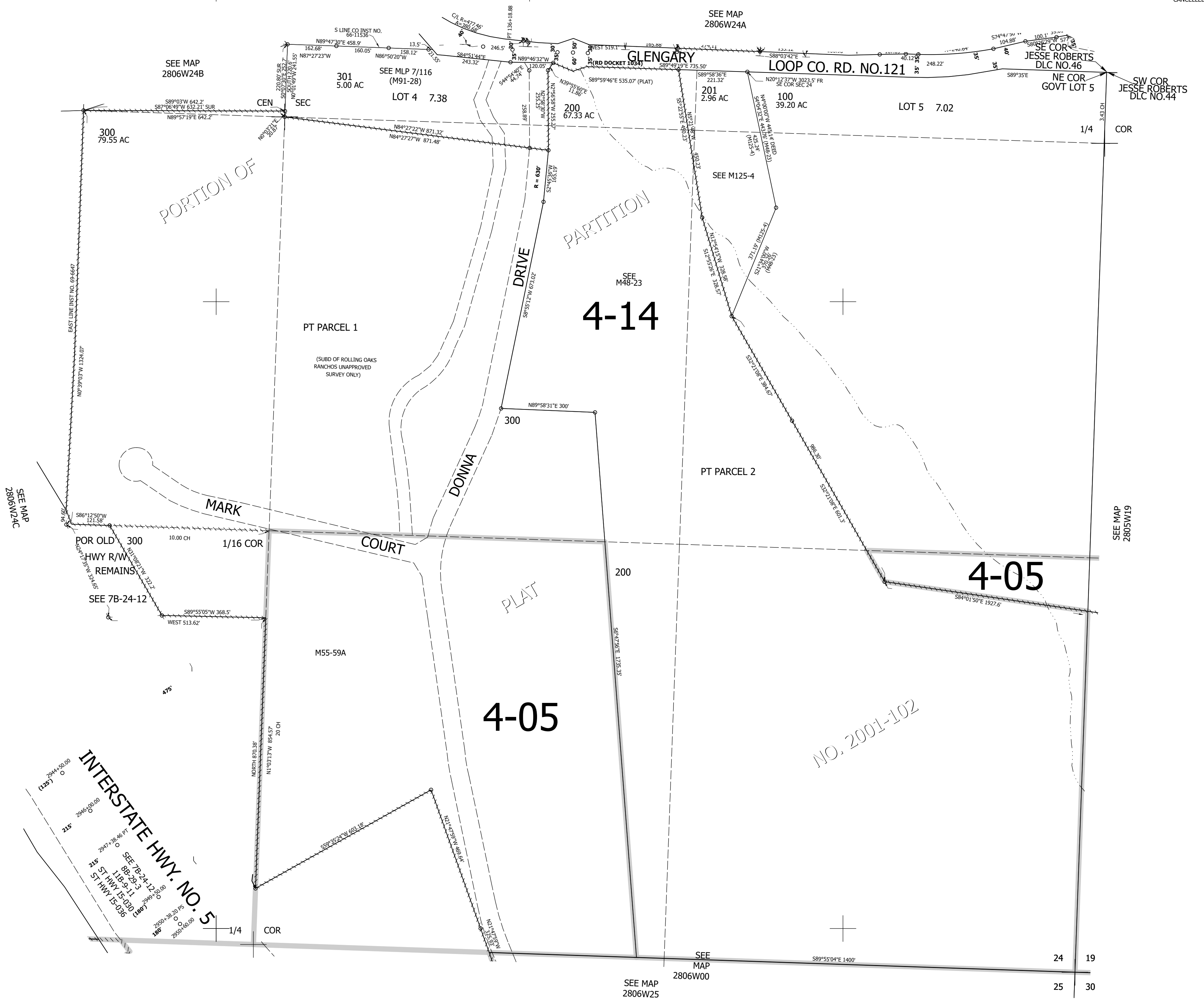
Upper Left:
123°21'31"W 43°7'17"N
4158281E 543177N ft

SE1/4 SEC.24 T.28S. R.06W. W.M.
DOUGLAS COUNTY
1" = 200'

Date Exported 2026-03-10

280624D

CANCELLED NOS:
302



24 19
25 30

280624D

Lower Right:
123°20'36"W 43°6'43"N
4162207E 539577N ft