

THIS MAP WAS PREPARED FOR ASSESSMENT PURPOSE ONLY.

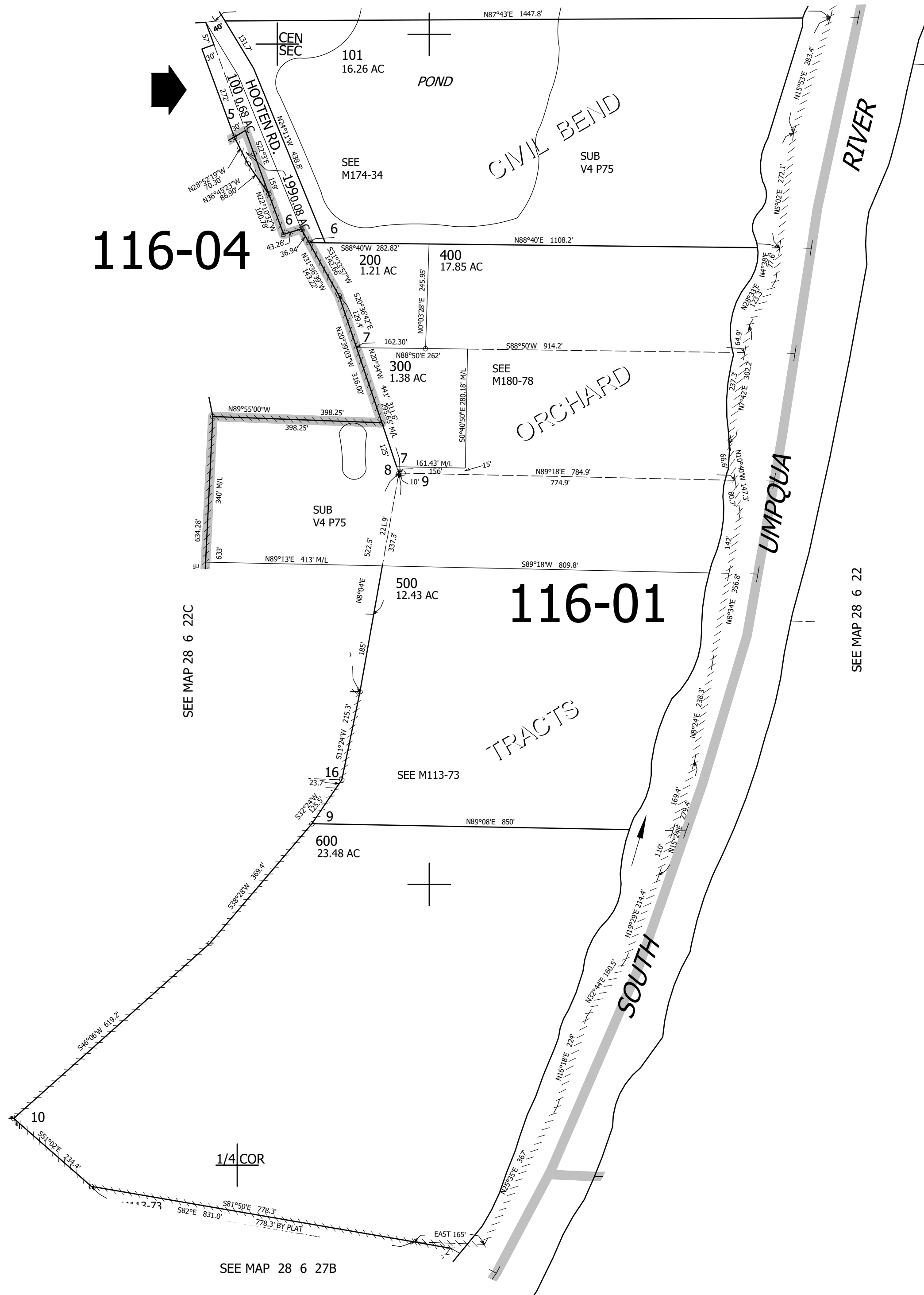
SE1/4 SEC.22 T.28S. R.6W. W.M.
DOUGLAS COUNTY

REVISED ON
3-8-22

28 6 22D
WINSTON

1" = 200'

SEE MAP 28 6 22A



116-04

116-01

1/4 COR

CANCELLED NO'S
201 301

SEE MAP 28 6 22C

SEE MAP 28 6 22

541,000

1/4 COR

SEE MAP 28 6 27B

22 23
27 26
28 6 22D
WINSTON

4,151,000