

THIS MAP WAS PREPARED FOR ASSESSMENT PURPOSE ONLY.

Upper Left:
123°24'21"W 43°7'2"N
4145628E 542054N ft

SW1/4 SW1/4 SEC.22 T.28S. R.06W. W.M.
DOUGLAS COUNTY
1" = 100'

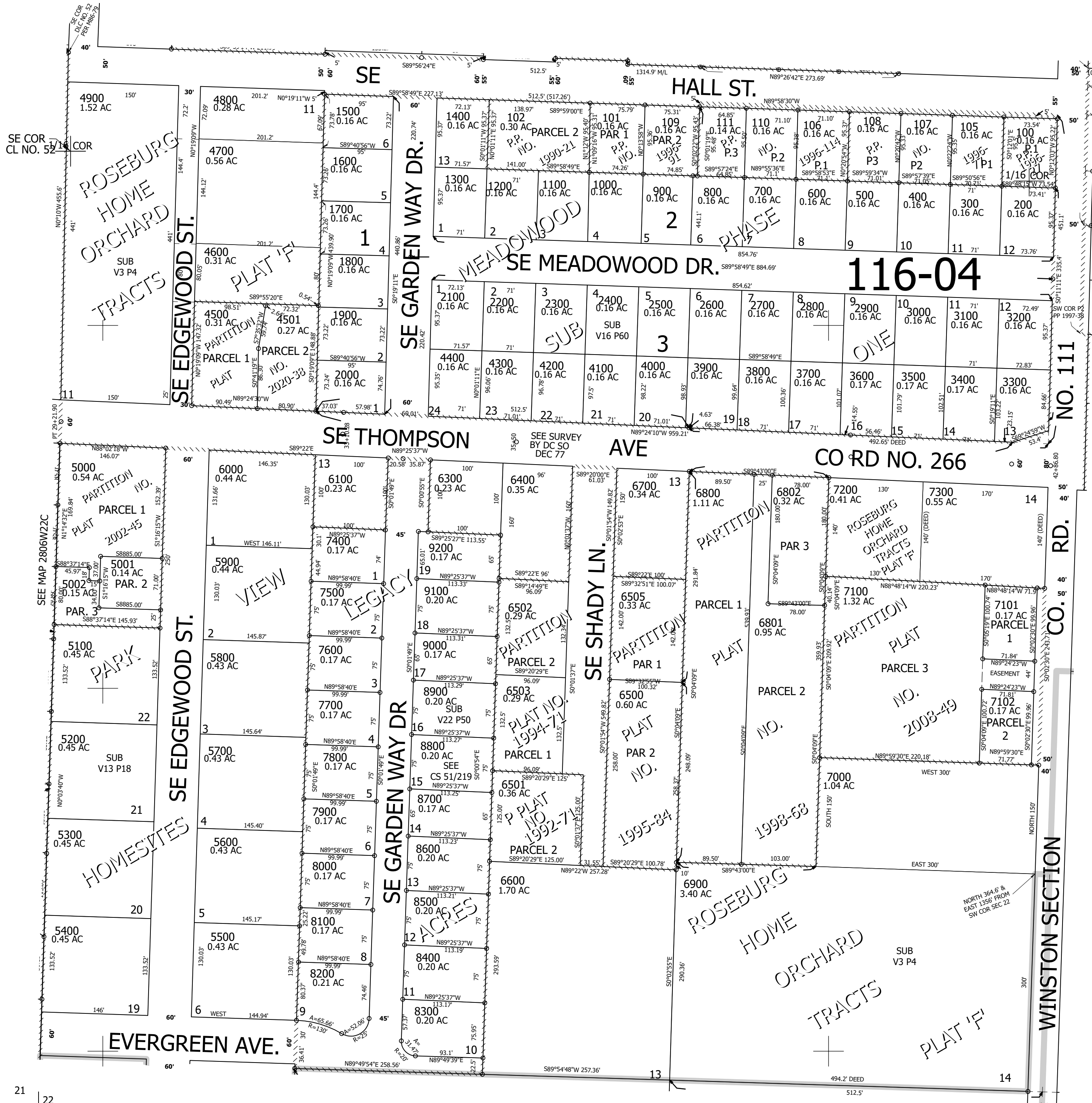
Date Exported 2025-02-03

280622CC
Winston

CANCELLED NOS:
103 104 6504 6200

SEE MAP
2806W22CB

SEE MAP 2806W22CA



SEE MAP
2806W21DD

SEE MAP
2806W22C

21
22
28
27

SEE MAP
2806W27BB

1/16 COR

280622CC
Winston

Lower Right:
123°23'53"W 43°6'45"N
4147603E 540315N ft