

THIS MAP WAS PREPARED FOR ASSESSMENT PURPOSE ONLY.

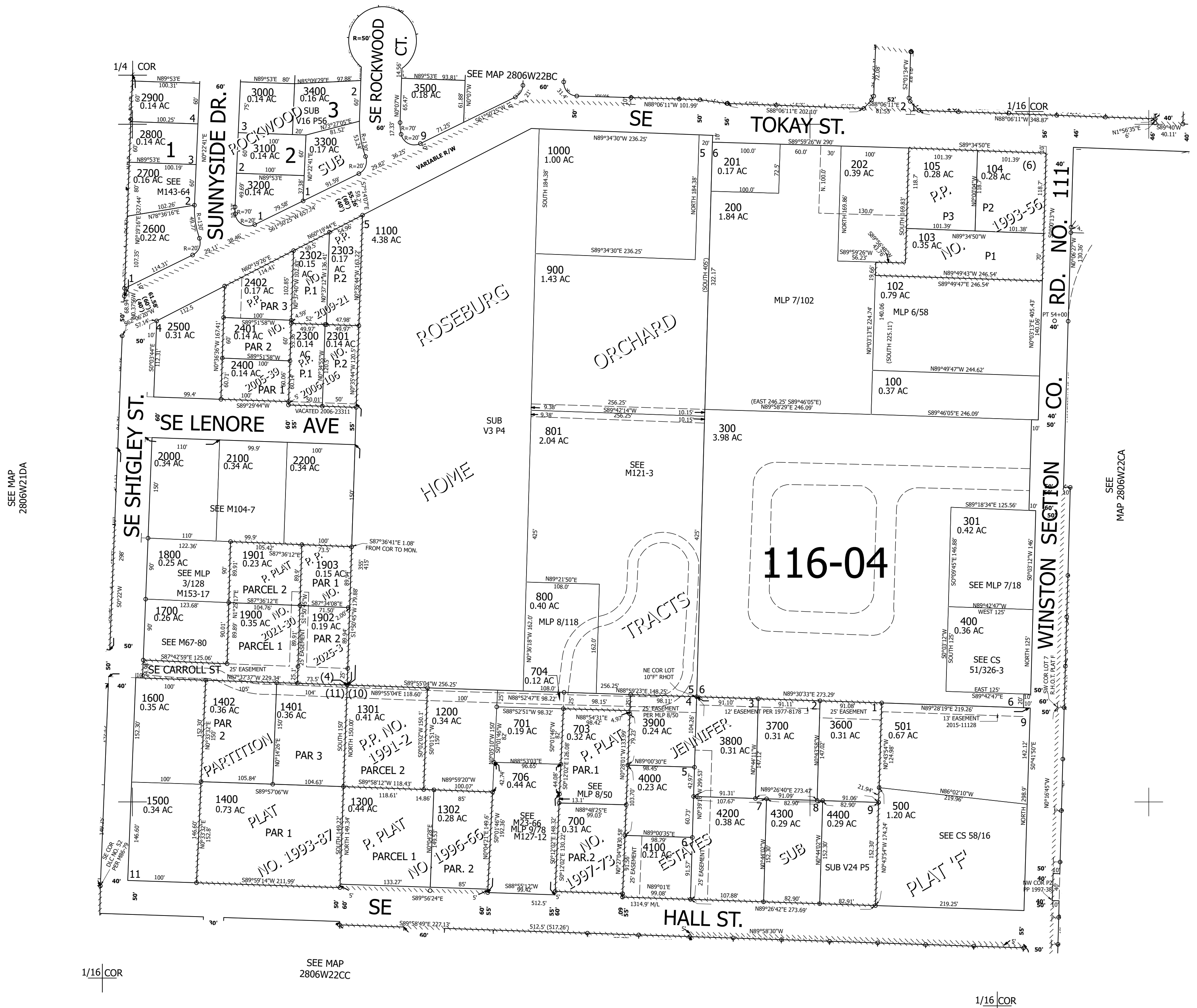
Upper Left:
123°24'19"W 43°7'14"N
4145765E 543336N ft

NW1/4 SW1/4 SEC.22 T.28S. R.06W. W.M.
DOUGLAS COUNTY
1" = 100'

Date Exported 2025-02-13

280622CB
Winston

CANCELLED NOS:
101 705 203
204 600 702



SEE MAP
2806W21DA

SEE
MAP 2806W22CA

SEE MAP
2806W22CC

280622CB
Winston

Lower Right:
123°23'52"W 43°6'58"N
4147742E 541616N ft