

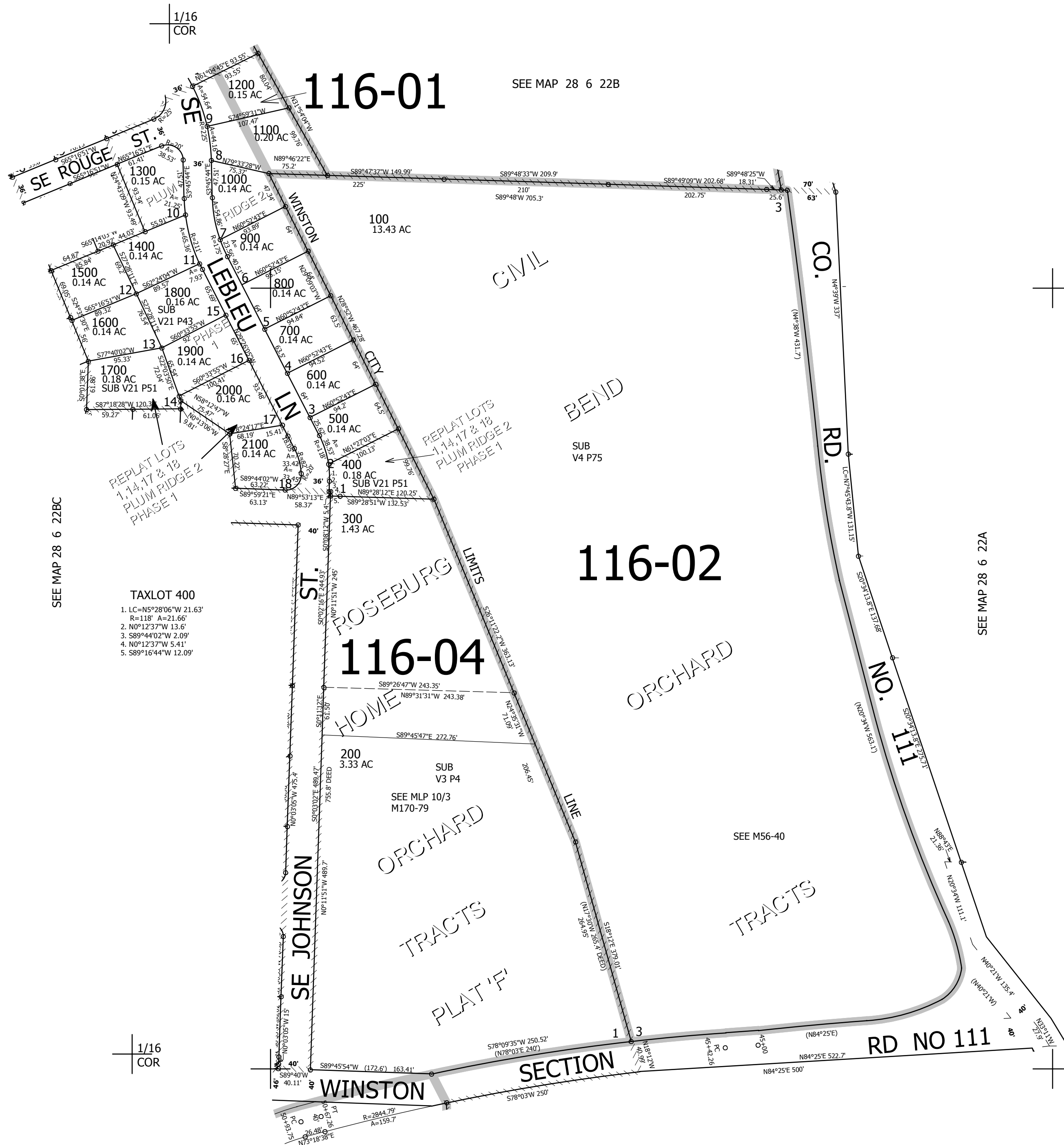
THIS MAP WAS PREPARED FOR ASSESSMENT PURPOSE ONLY.

SE1/4 NW1/4 SEC.22 T.28S. R.6W. W.M.
DOUGLAS COUNTY

1" = 100'

REVISED ON
5-31-16

28 6 22BD
WINSTON



SEE MAP 28 6 22BC

- TAXLOT 400
1. LC=N5°28'06"W 21.63'
R=118' A=21.66'
 2. N0°12'37"W 13.6'
 3. S89°44'02"W 2.09'
 4. N0°12'37"W 5.41'
 5. S89°16'44"W 12.09'

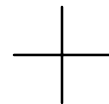
SEE MAP 28 6 22B

SEE MAP 28 6 22A

SEE MAP 28 6 22CA

1/16
COR

CANCELLED NO'S
201



1/16
COR

543,000
CEN
SEC

4,148,500

28 6 22BD
WINSTON