

THIS MAP WAS PREPARED FOR ASSESSMENT PURPOSE ONLY.

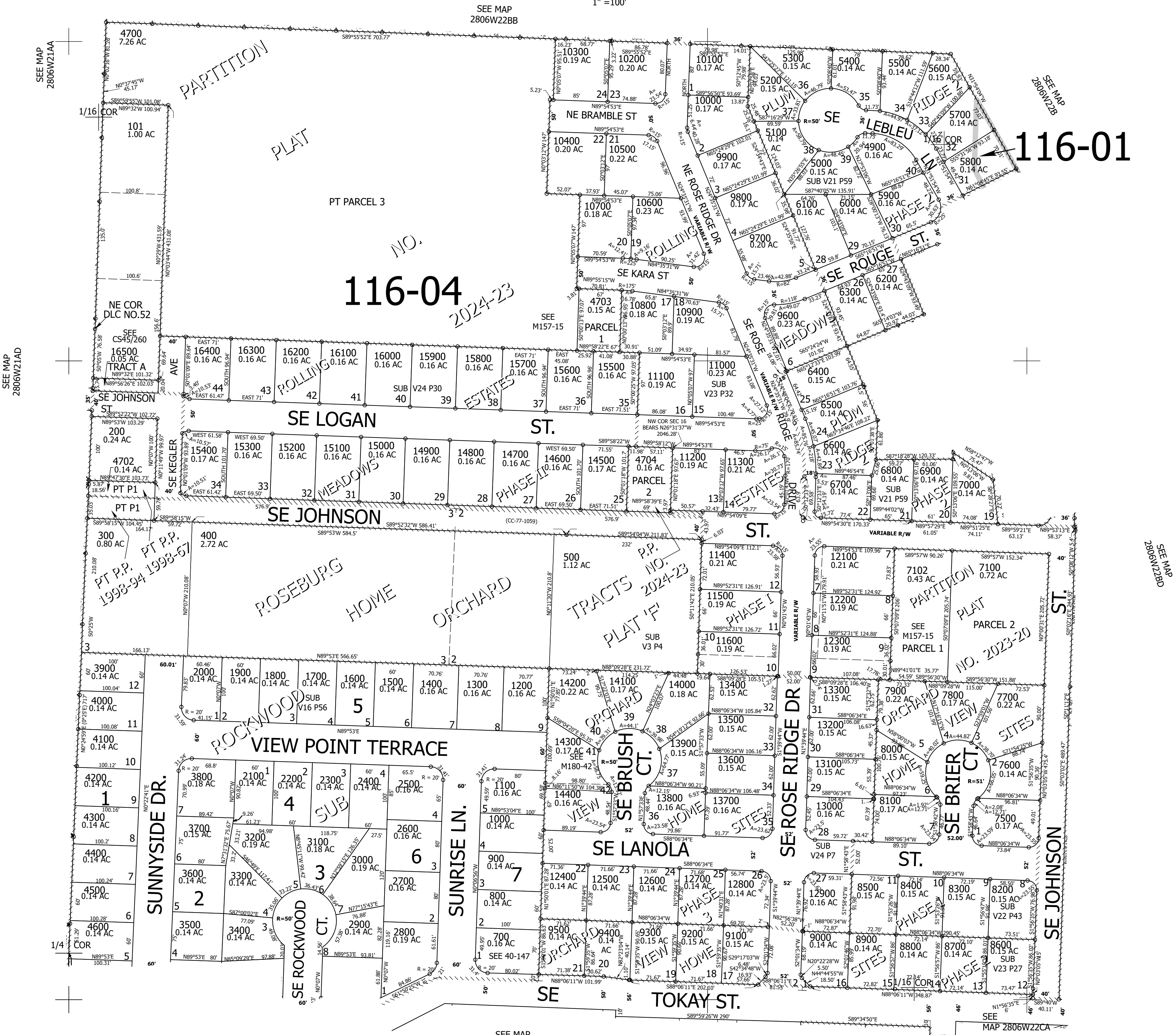
Upper Left:
123°24'19"W 43°7'27"N
414583E 544597N ft

SW1/4 NW1/4 SEC.22 T.28S. R.06W. W.M.
DOUGLAS COUNTY
1" = 100'

Date Exported 2026-01-29

280622BC
Winston

CANCELLED NOS:
7401 100 102
4701 4800 7200
7300 11700 11800
11900 12000 7401
600 7400 7402
7403 7404 601
14401 7101 4705



116-04
2024-23

116-01

SEE MAP
2806W22CB

SEE MAP
MAP 2806W22CA

280622BC
Winston

Lower Right:
123°23'51"W 43°7'10"N
4147830E 542877N ft