

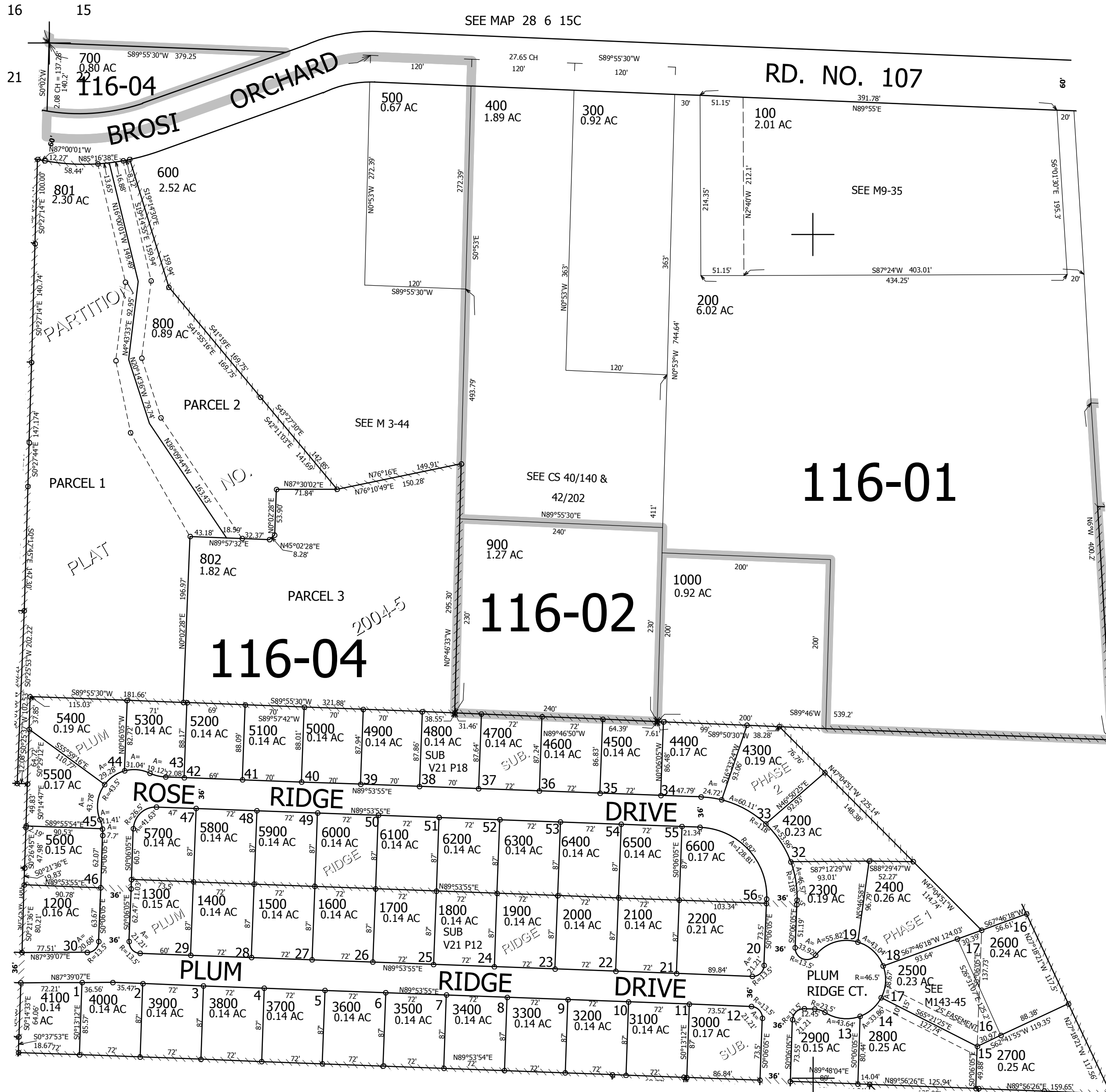
THIS MAP WAS PREPARED FOR ASSESSMENT PURPOSE ONLY.

NW1/4NW1/4 SEC.22 T.28S. R.6W. W.M. DOUGLAS COUNTY

REVISED ON 6-18-15

28 6 22BB WINSTON

1" = 100'



SEE MAP 28 6 15C

RD. NO. 107

116-04

116-02

116-01

1/16 COR

CANCELLED NO'S 1100 2501 2601 2602

SEE MAP 28 6 21AA

SEE MAP 28 6 22B

SEE MAP 28 6 22BC

1/16 COR

1/16 COR

544,500

28 6 22BB WINSTON

4,147,000