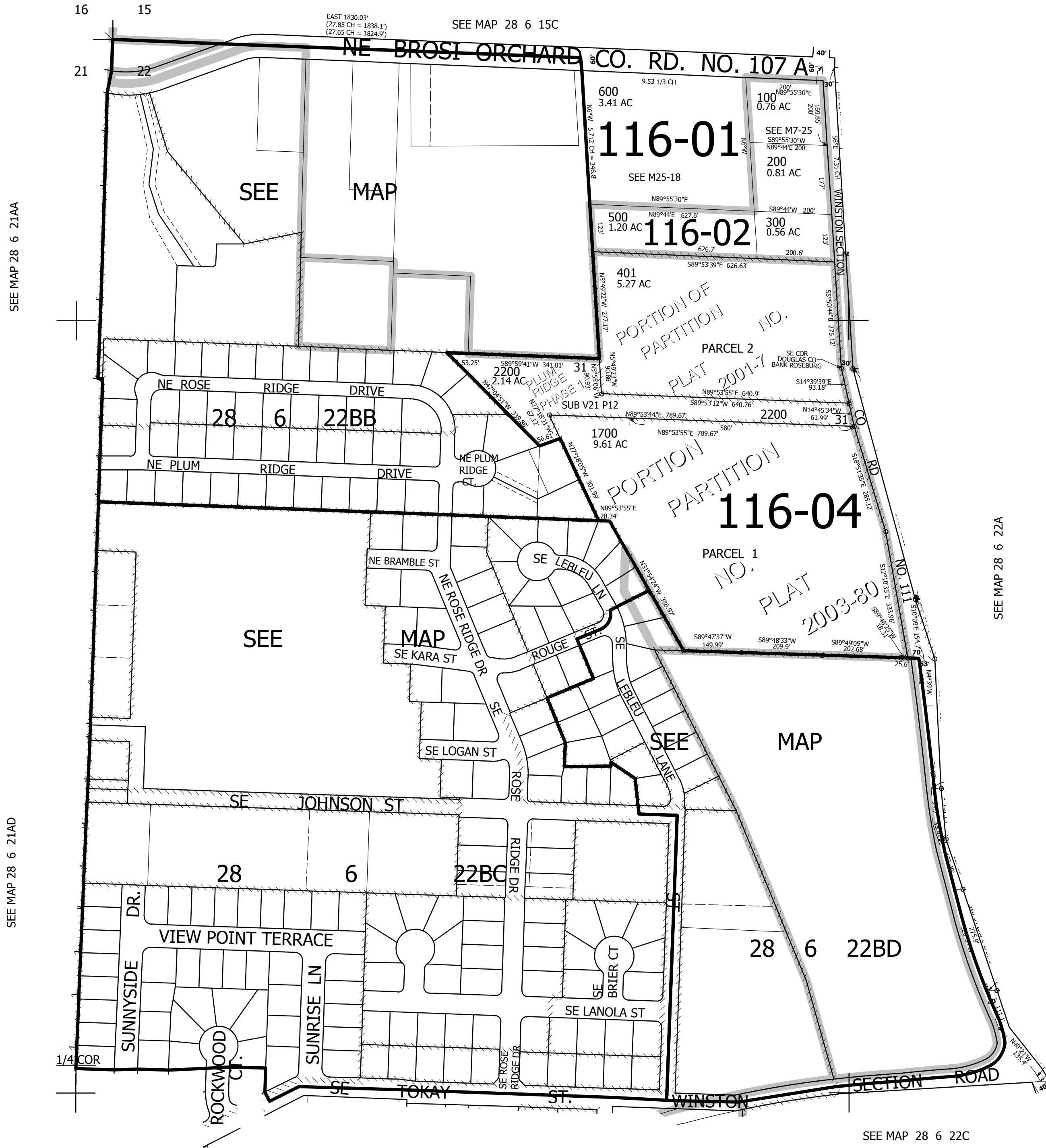


THIS MAP WAS PREPARED FOR ASSESSMENT PURPOSE ONLY.

NW1/4 SEC.22 T.28S. R.6W. W.M.  
DOUGLAS COUNTY  
1" = 200'

REVISED ON  
6-18-15

28 6 22B  
& INDEX  
WINSTON



1/4  
COR

CANCELLED NO'S  
700 THRU 1600  
400 2000 2001  
2100 1701 1702  
1703 1704 1800  
1801 1802 1900

SEE MAP 28 6 22A

SEE MAP 28 6 21AA

SEE MAP 28 6 21AD

SEE MAP 28 6 22CB

SEE MAP 28 6 22C

CEN  
SEC

544,000

4,148,000

28 6 22B  
& INDEX  
WINSTON