

THIS MAP WAS PREPARED FOR ASSESSMENT PURPOSE ONLY.

SE1/4 SW1/4 SEC.21 T.28S. R.6W. W.M. DOUGLAS COUNTY

1" = 100'

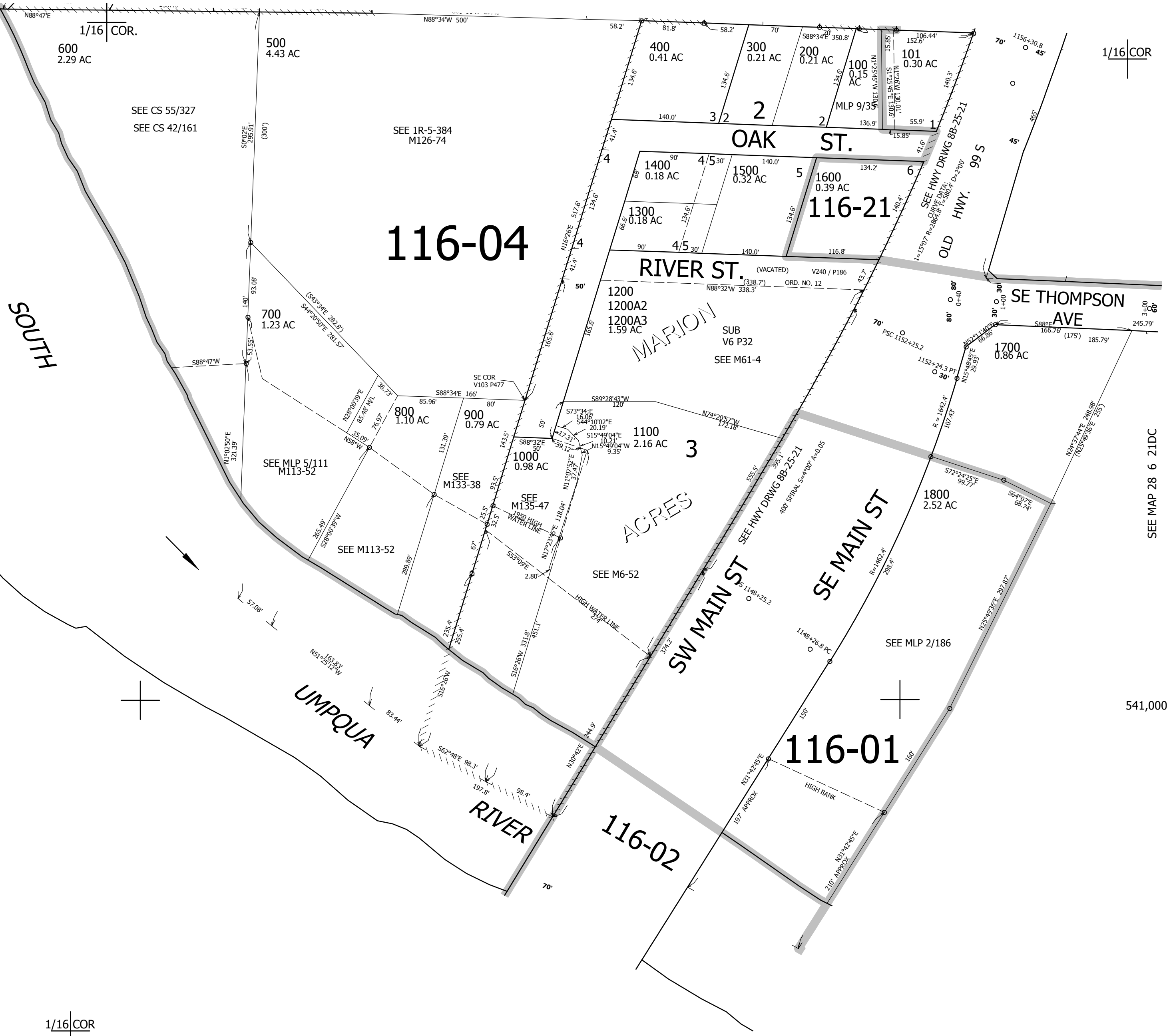
REVISED ON 4-1-19

28 6 21CD WINSTON

CANCELLED NO'S 102 701 1001 1101 1200A1 1100A1 1100A2 1100A3

SEE MAP 28 6 21CA

1/16 COR



SEE MAP 28 6 21

SEE MAP 28 6 21DC

541,000

1/16 COR

SEE MAP 28 6 28B

4,143,000

1/4 COR

28 6 21CD WINSTON