

THIS MAP WAS PREPARED FOR ASSESSMENT PURPOSE ONLY.

Upper Left:
123°24'38"W 43°7'27"N
4144396E 544663N ft

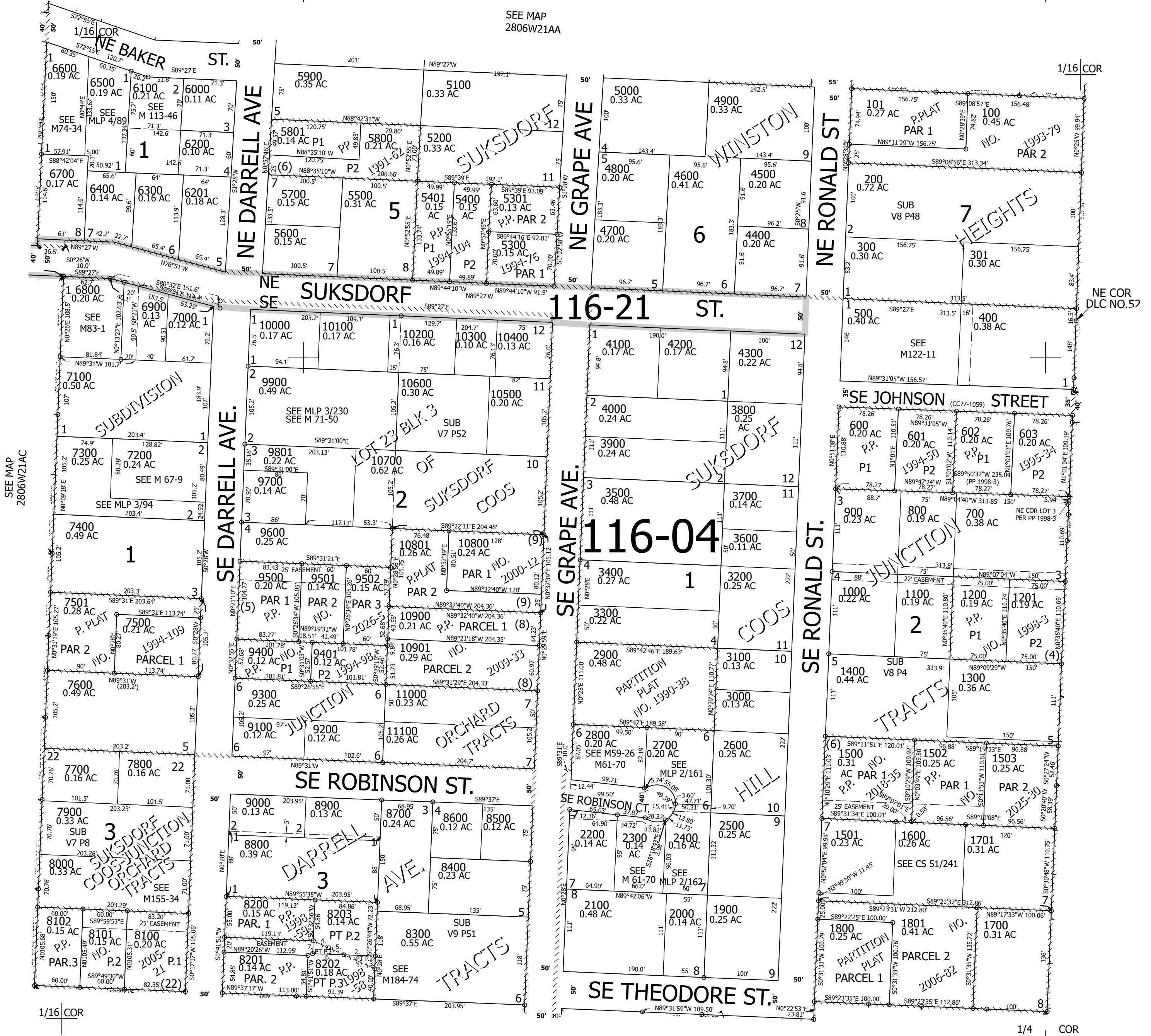
SE1/4 NE1/4 SEC.21 T.28S. R.06W. W.M.
DOUGLAS COUNTY
1" = 100'

Date Exported 2026-02-10

280621AD
Winston

CANCELLED NOS:
9800 8204 8205

- PARCELS 8202 & 8203
- 1. N67°27'24"W 45.86'
- 2. S89°44'30"E 42.49'
- 3. S0°26'44"W 17.39'
- 4. S67°03'34"E 20.12'
- 5. S67°46'04"E 25.71'
- 6. N89°44'30"W 42.50'
- 7. N0°32'56"E 17.38'



SEE MAP
2806W21AC

SEE MAP
2806W21DA

SEE MAP
2806W22BC

280621AD
Winston

Lower Right:
123°24'11"W 43°7'10"N
4146368E 542924N ft