

THIS MAP WAS PREPARED FOR ASSESSMENT PURPOSE ONLY.

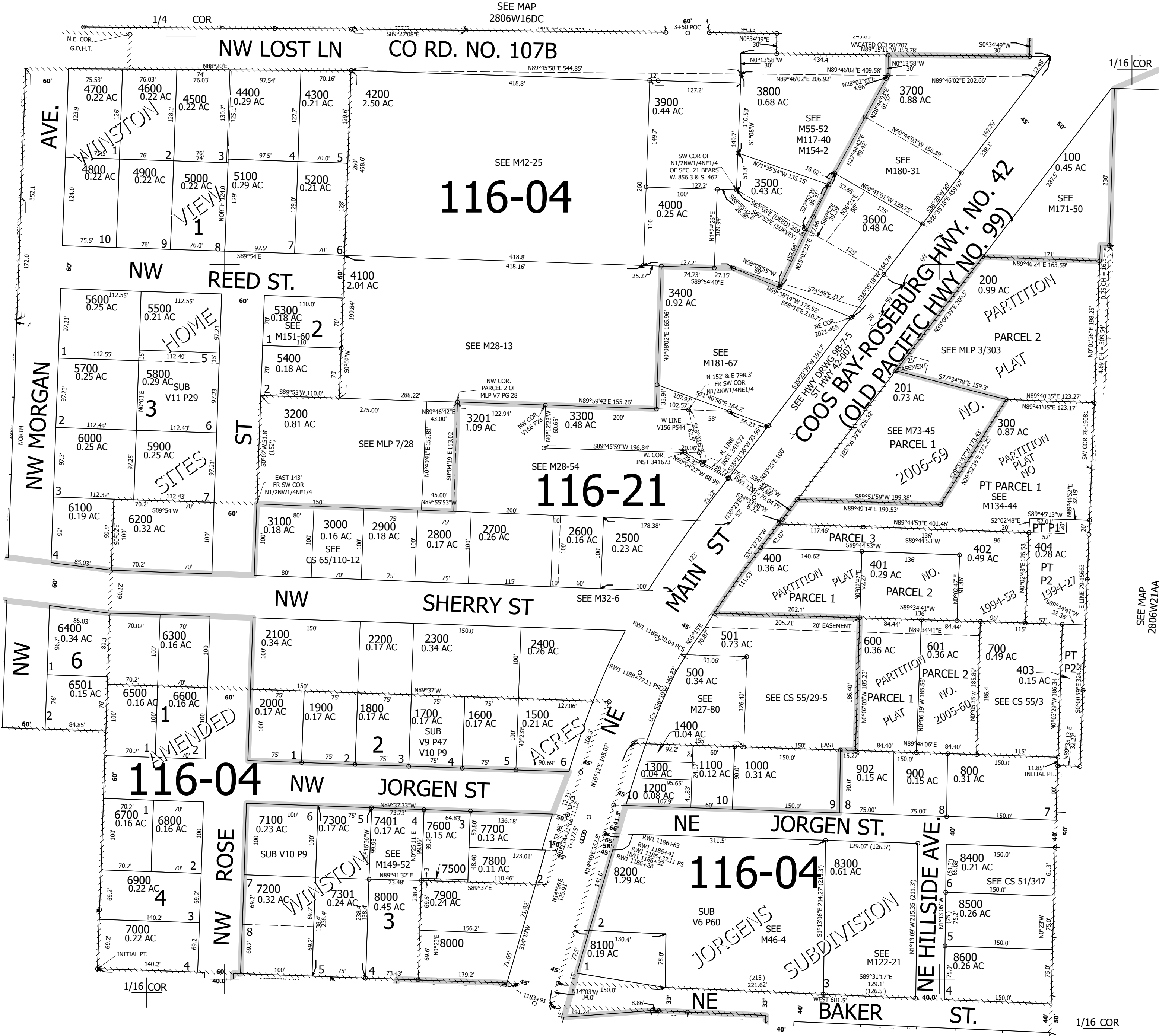
Upper Left:
123°24'58"W 43°7'40"N
4143011E 546024N ft

NW1/4 NE1/4 SEC.21 T.28S. R.06W. W.M.
DOUGLAS COUNTY
1" = 100'

Date Exported 2025-06-24

280621AB
Winston

CANCELLED NOS:
3701 3702 3501
3801 301 302
7400 901 400A1
3202 3401



SEE MAP 2806W21BA

SEE MAP 2806W21AA

SEE MAP 2806W21AC

280621AB
Winston

Lower Right:
123°24'30"W 43°7'23"N
4144986E 544245N ft