

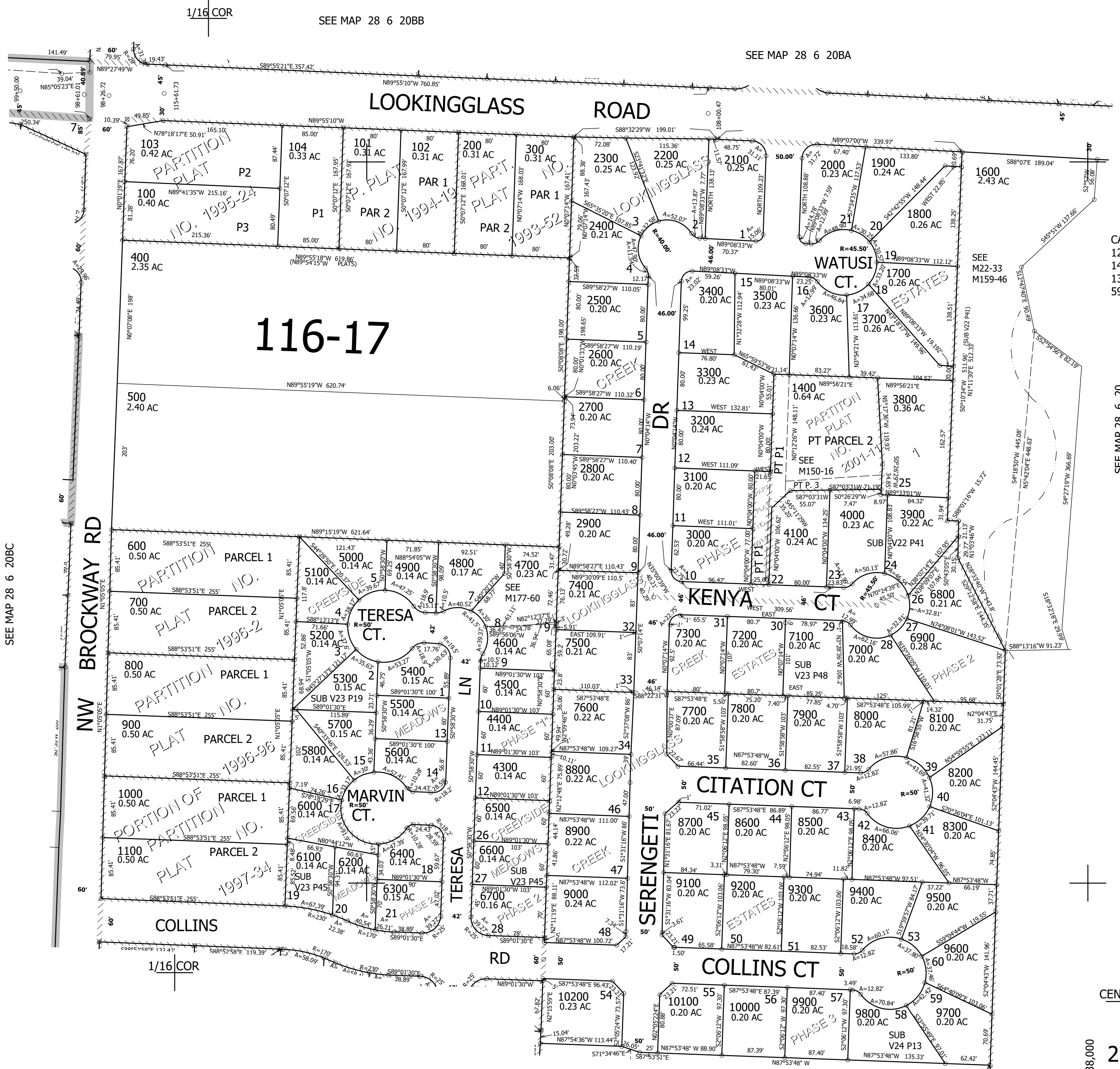
THIS MAP WAS PREPARED FOR ASSESSMENT PURPOSE ONLY.

SE1/4 NW1/4 SEC.20 T.28S. R.6W. W.M. DOUGLAS COUNTY

REVISED ON 10-21-21

28 6 20BD WINSTON

1" = 100'



CANCELLED NOS
1201 1301 1302
1401 1501 1200
1300 1500 4200
5900 4601 4701

SEE MAP 28 6 20

543,500

CEN SEC

28 6 20BD WINSTON

SEE MAP 28 6 20CA

4,138,000