

THIS MAP WAS PREPARED FOR ASSESSMENT PURPOSE ONLY.

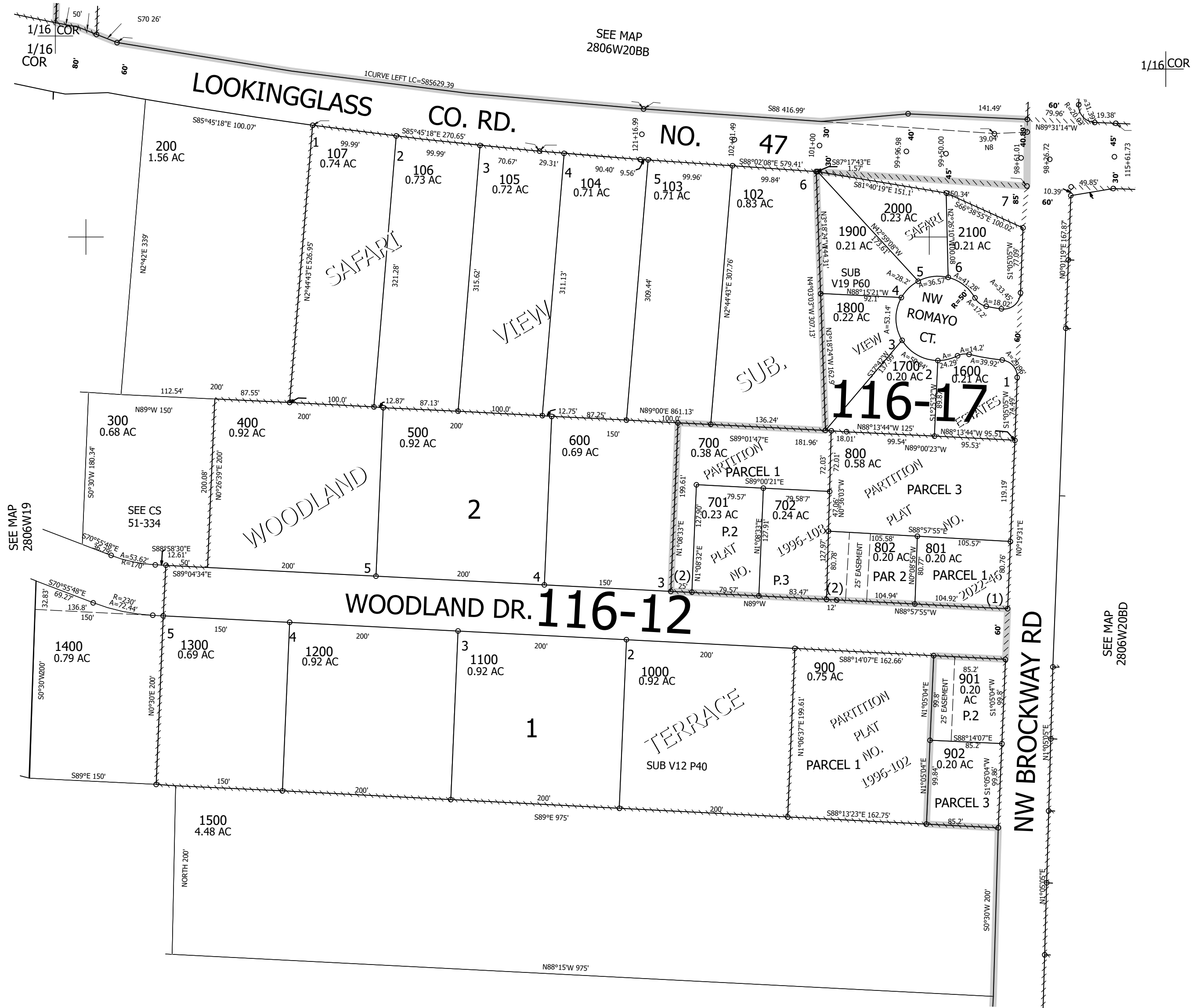
Upper Left:  
123°26'44"W 43°7'27"N  
4135099E 545051N ft

SW1/4 NW1/4 SEC.20 T.28S. R.06W. W.M.  
DOUGLAS COUNTY  
1" = 100'

Date Exported 2023-06-22

280620BC  
Winston

CANCELLED NOS:  
703 101 100



SEE MAP  
2806W20BB

SEE MAP  
2806W19

SEE MAP  
2806W20BD

SEE MAP  
2806W20C

1/4 COR

1/16 COR

280620BC  
Winston

Lower Right:  
123°26'17"W 43°7'11"N  
4137061E 543312N ft