

THIS MAP WAS PREPARED FOR ASSESSMENT PURPOSE ONLY.

Upper Left:  
123°26'42"W 43°7'38"N  
4135273E 546159N ft

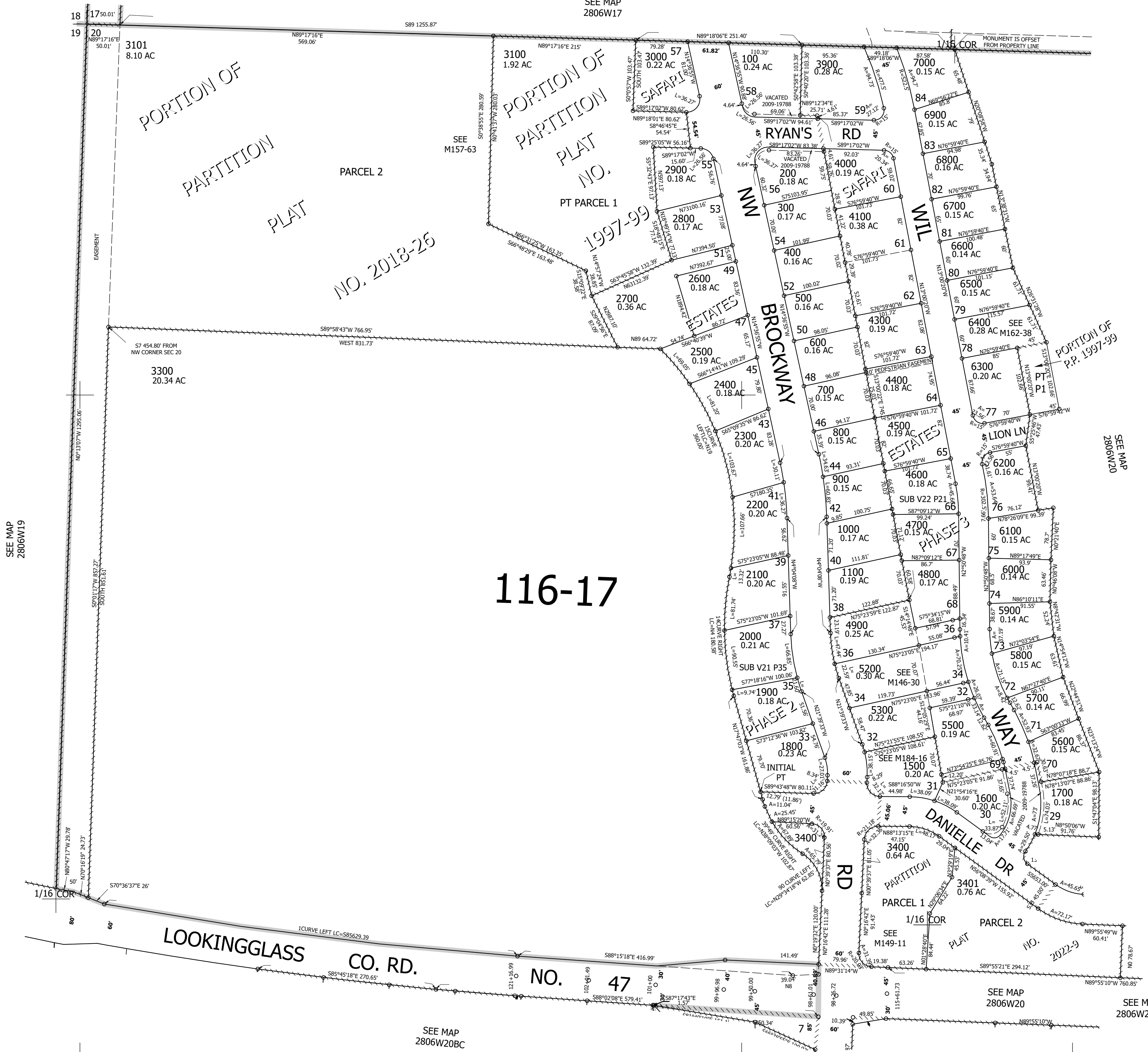
NW1/4 NW1/4 SEC.20 T.28S. R.06W. W.M.  
DOUGLAS COUNTY  
1" = 100'

Date Exported 2026-04-01

280620BB  
Winston

CANCELLED NOS:  
1200 1300 1400  
3500 3600 3700  
3800 5000 5100  
5400 4200 3200  
5501

SEE MAP  
2806W17



116-17

SEE MAP  
2806W19

SEE MAP  
2806W20BC

SEE MAP  
2806W20

SEE MAP  
2806W20BD

SEE MAP  
2806W20BA

280620BB  
Winston

Lower Right:  
123°26'15"W 43°7'22"N  
4137251E 544439N ft