

THIS MAP WAS PREPARED FOR ASSESSMENT PURPOSE ONLY.

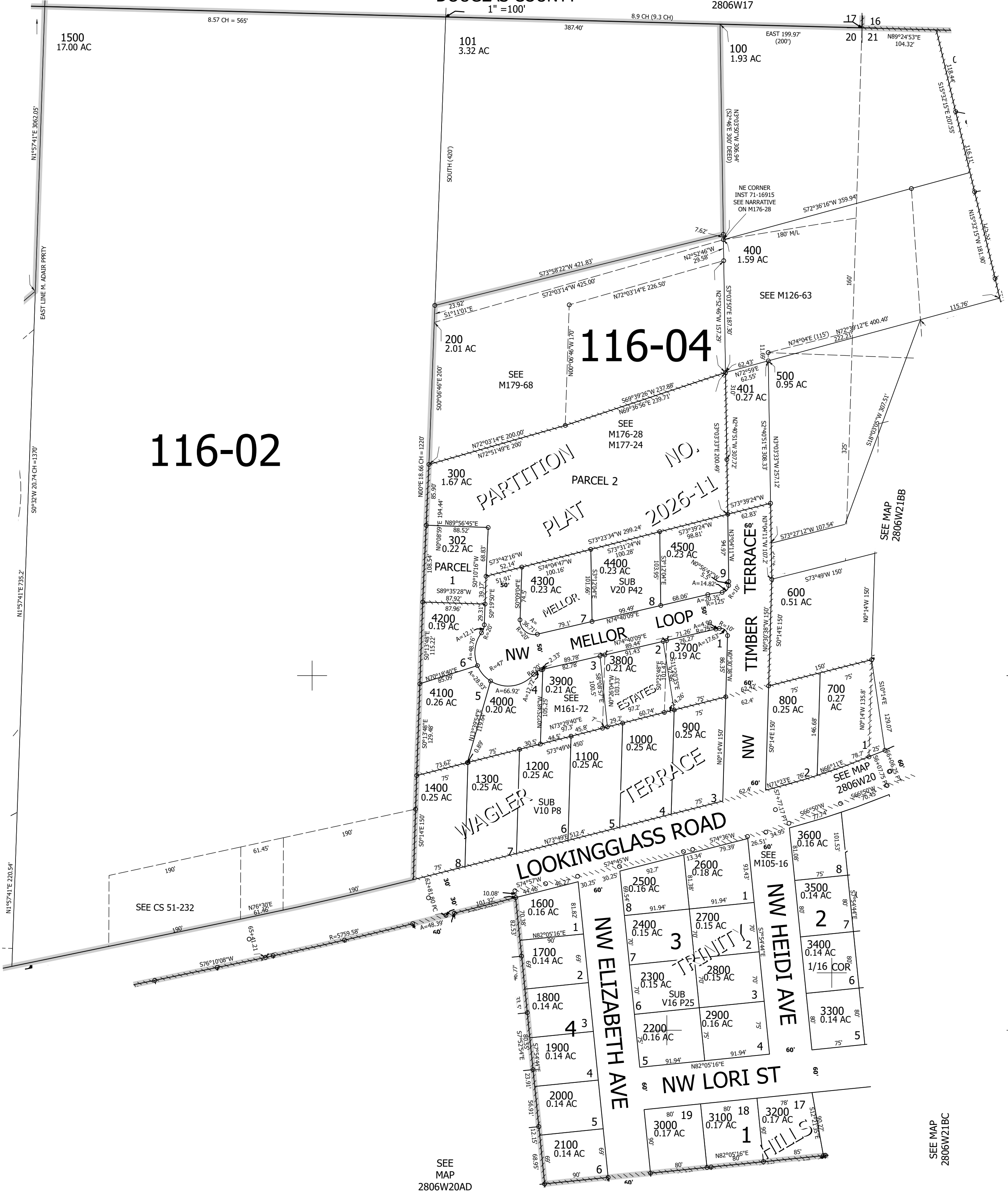
Upper Left:  
123°25'48"W 43°7'38"N  
4139280E 545975N ft

NE1/4 NE1/4 SEC.20 T.28S. R.06W. W.M.  
DOUGLAS COUNTY

Date Exported 2026-03-25

280620AA  
Winston

CANCELLED NOS:  
3701 3801 3802  
3901 301 102  
103 501 502



SEE MAP  
2806W20

SEE MAP  
2806W21BB

SEE  
MAP  
2806W20AD

SEE MAP  
2806W21BC

1/16 COR

280620AA  
Winston

Lower Right:  
123°25'21"W 43°7'22"N  
4141258E 544255N ft