

THIS MAP WAS PREPARED FOR ASSESSMENT PURPOSE ONLY.

Upper Left:
123°26'57"W 43°7'44"N
4134157E 546762N ft

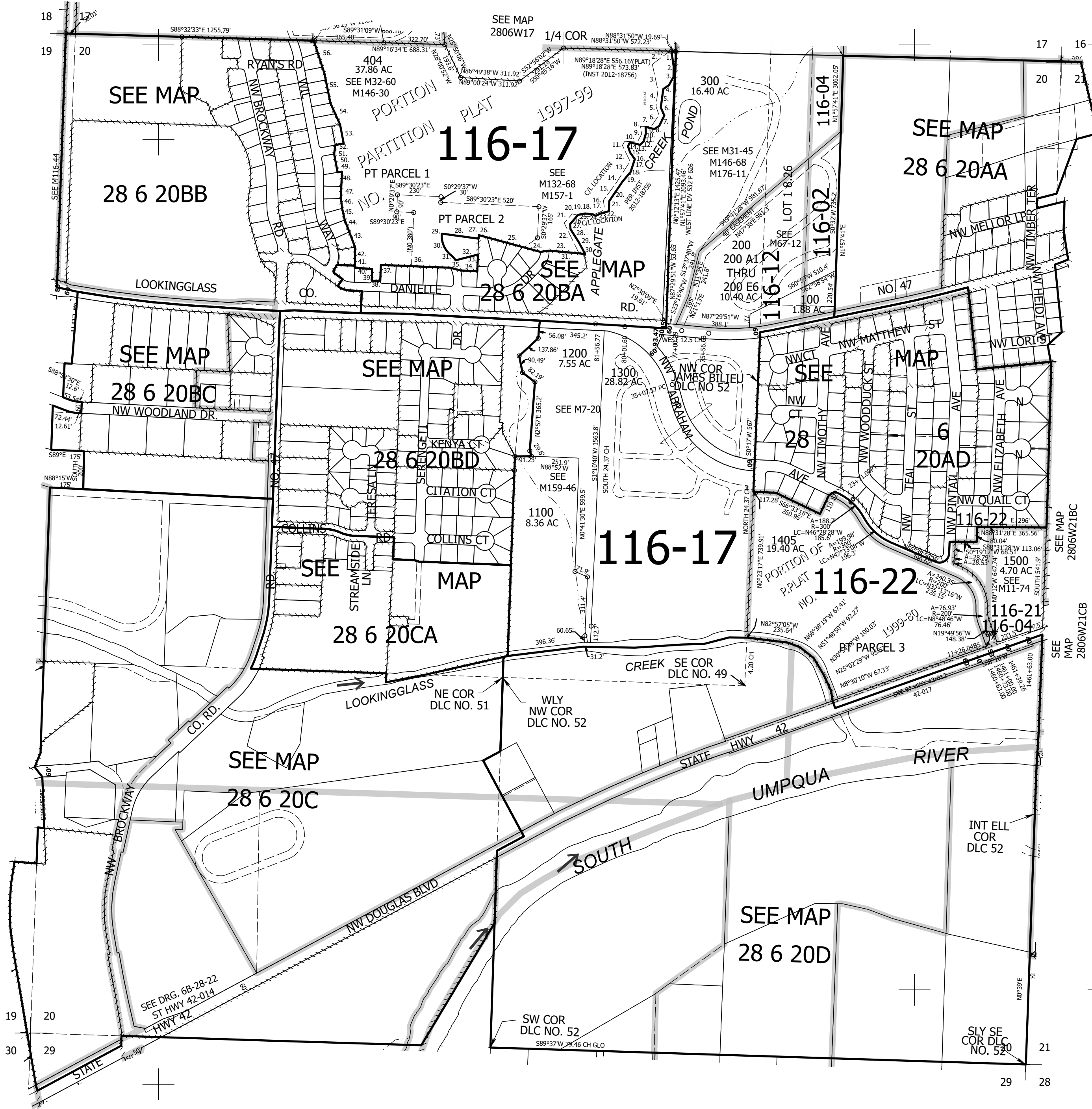
SEC.20 T.28S. R.06W. W.M.
DOUGLAS COUNTY
1" = 400'

Date Exported 2026-03-09

280620
& INDEX
Winston

CANCELLED NOS:
200A5 1401.1402
200D6 999.500
600 700.1400
1501 1404.901
900 1000.800
801 802.402
400 405.406
1406 401.403
407 408.409
903 803.1101
410 902.411
1600 1601

- PARCEL 404
- S31°53'07"E 3.9'
 - S49°23'49"W 110.8'
 - S14°35'09"E 140.2'
 - S4°31'44"W 86'
 - S21°00'14"E 48.5'
 - S31°43'44"W 73.2'
 - S88°30'19"W 56.7'
 - S10°50'06"E 41.2'
 - S25°13'01"W 41.2'
 - S84°23'19"W 72.4'
 - S26°04'06"W 22.2'
 - S28°02'00"E 92.8'
 - S30°50'27"W 91.4'
 - S29°03'44"W 45.8'
 - S34°09'33"W 113'
 - S8°54'43"E 40.6'
 - S31°15'06"W 19.8'
 - S64°28'15"W 72.6'
 - N90°00'00"W 34.5'
 - N80°27'36"W 58.9'
 - S38°53'40"W 64.1'
 - S28°14'09"E 179.23'
 - N86°52'34"W 159.86'
 - S78°43'14"W 45.36'
 - N77°07'06"W 291.15'
 - N76°27'29"W 47.34'
 - S0°00'00"W 18.78'
 - N84°27'19"W 196.51'
 - S0°01'33"E 8.45'
 - A=116.08' R=127.5'
 - LC=S26°06'28"E 112.11'
 - A=41.21' R=172.5'
 - LC=S45°20'44"E 41.11'
 - N73°12'35"E 122.22'
 - S0°00'00"E 88.07'
 - N89°57'33"W 88.4'
 - N77°40'19"W 56.49'
 - N89°50'23"W 367.68'
 - S0°09'27"W 86'
 - N89°50'33"W 45'
 - N0°09'27"E 63.5'
 - N89°50'33"W 91.97'
 - N0°09'27"W 12.5'
 - N1°47'04"W 98.13'
 - N23°13'24"W 86.37'
 - N22°44'51"W 66.99'
 - N14°54'12"W 63.61'
 - N8°42'31"W 52.24'
 - N0°46'08"W 63.46'
 - N0°21'40"W 78.7'
 - S78°26'09"W 23.22'
 - N13°00'20"W 99.41'
 - N5°25'46"E 47.43'
 - N76°59'40"E 45'
 - N13°00'20"W 102.66'
 - N26°31'28"W 123.42'
 - N13°38'31"W 159.95'
 - N20°08'58"W 179.82'



- C/L APPLAGATE CR
PER INST 2012-18756
ALONG C/L OF CREEK
- S10°33'28"E 81.24'
 - S1°46'30"E 55.44'
 - S26°33'29"W 50.55'
 - S53°35'00"W 36.18'
 - S4°53'53"W 98.36'
 - S25°47'47"E 46.47'
 - S23°28'23"W 61.24'
 - S55°17'10"W 30.79'
 - N78°15'48"W 48.09'
 - S4°31'09"E 36.31'
 - S13°30'50"W 43.31'
 - S45°01'58"W 25.28'
 - N79°14'30"W 55.11'
 - S25°40'35"W 22.21'
 - S20°59'18"E 35.22'
 - S36°53'15"E 43.57'
 - S15°39'22"W 71.21'
 - S7°41'57"W 66.79'
 - S31°54'13"W 124.25'
 - S0°17'03"E 53.58'
 - S72°23'44"W 45.34'
 - S61°56'45"W 27.89'
 - N67°56'54"W 17.71'
 - N85°43'27"W 41.09'
 - S76°11'21"W 37.72'
 - S38°30'09"W 64.12'
 - S6°23'28"E 27.58'
 - S34°46'42"E 84.1'
 - S31°04'01"E 68.65'
 - LEAVING C/L OF CREEK
 - S83°46'54"W 6.61'
 - TO NE COR LOT 13 PLAT 21/5
 - N86°53'14"W 187.87'

280620
& INDEX
Winston

Lower Right:
123°25'18"W 43°6'38"N
4142006E 539807N ft