

THIS MAP WAS PREPARED FOR ASSESSMENT PURPOSE ONLY.

SEC.19 T.28S. R.6W. W.M. DOUGLAS COUNTY

REVISED ON 11-19-15

28 6 19

1" = 400'

CANCELLED NO'S 2002 1900 2003 2101 2100 2700 2601 2103 2400 2600 2501 401 2102 2004

PARCEL 600 1. N86°32'E 222.61' 2. S18°28'31"E 293.28' 3. N86°32'43"E 222.34' 4. N18°32'50"W 293.33'

PARCELS 300, 501 & 502 1. N32°19'56"W 251.73' 2. N33°57'10"W 117.09' 3. N39°40'58"W 70.83' 4. N59°21'29"W 201.18' 5. N1°52'39"W 179.48' 6. N66°58'44"W 69.18' 7. S44°54'02"W 146.68' 8. S8°56'25"W 115.9' 9. S8°56'25"W 18.31' 10. S15°17'59"E 248.08' 11. S27°46'18"E 190.77' 12. S43°13'02"E 45.64' 13. S41°01'48"E 31.98' 14. N60°34'48"E 267.04' 15. N43°39'08"E 90.86' 16. N52°34'23"E 30.85' 17. N62°12'47"E 26.85' 18. N75°14'40"E 13.68'

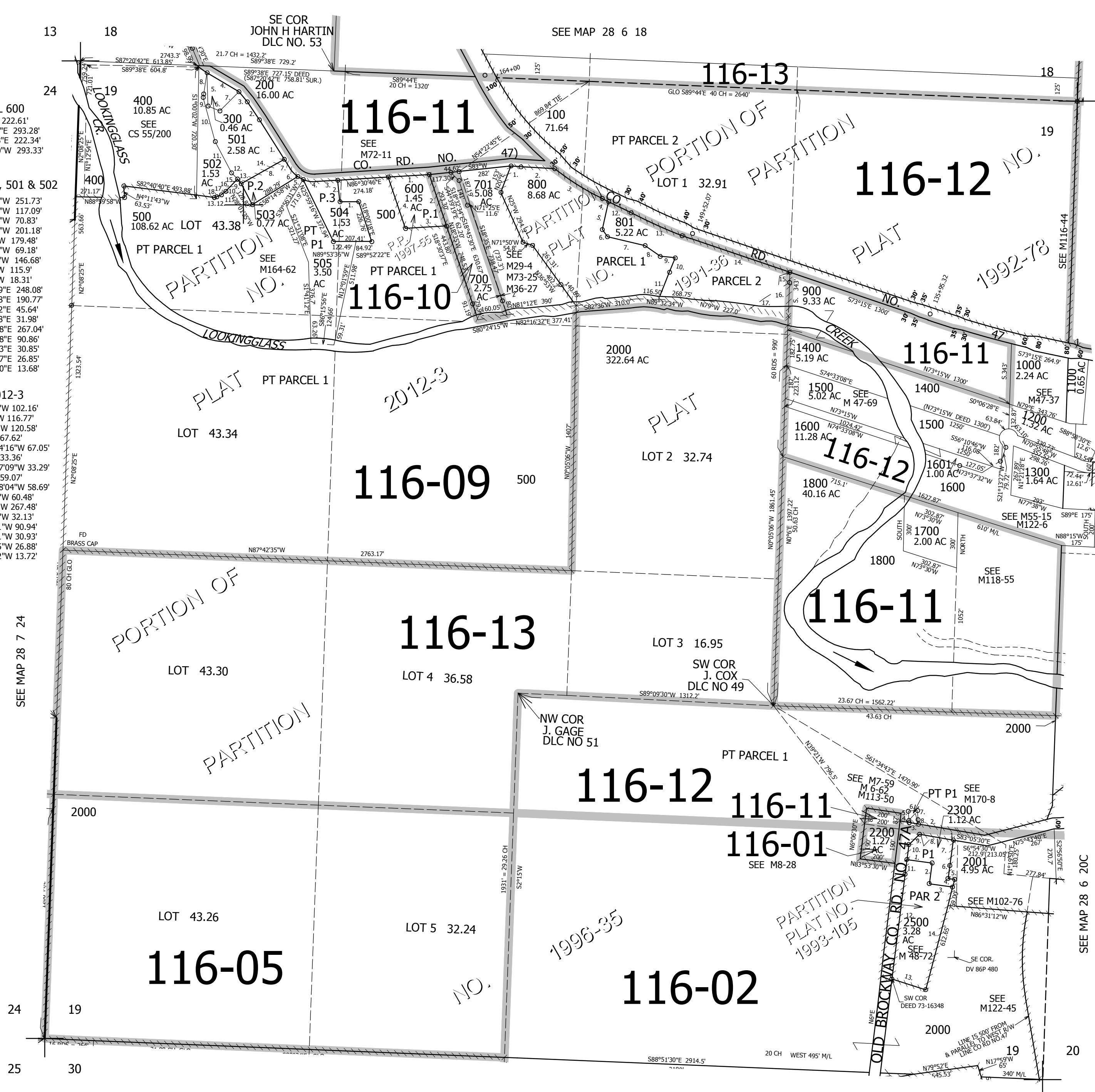
PP 2012-3 1. N89°53'05"W 102.16' 2. N5°55'56"W 116.77' 3. S86°30'46"W 120.58' 4. R=150' A=67.62' LC= N80°34'16"W 67.05' 5. R=150' A=33.36' LC= N61°17'09"W 33.29' 6. R=150' A=59.07' LC= N43°38'04"W 58.69' 7. N32°17'44"W 60.48' 8. S60°31'49"W 267.48' 9. N39°54'58"W 32.13' 10. S43°35'51"W 90.94' 11. S52°25'31"W 30.93' 12. S65°43'35"W 26.88' 13. S75°14'32"W 13.72'

SEE MAP 28 6 20 SEE MAP 28 6 20B C

PP 1991-36 1. S86°25'E 54.4' 2. S87°45'E 82.22' 3. LC=S58°54'58"E 303.91' 4. S64°48'43"E 38.63' 5. S11°50'26"W 154.29' 6. S36°53'49"E 48.28' 7. S77°42'09"E 208.44' 8. S55°29'53"E 100.73' 9. S85°36'59"E 81.45' 10. S20°56'21"W 158.53' 11. S20°56'21"W 158.53' 12. S64°48'43"E 237.18' 13. LC=S68°34'17"E 249.82' 14. S72°15'16"E 530.16' 15. S1°08'07"E 47.24' 16. S1°08'07"E 41.12' 17. S57°W 117.76'

PP 1993-105 1. S85°10'22"E 135.53' 2. S8°17'44"W 112.03' 3. S83°08'13"E 139.5' 4. N13°53'31"E 40' 5. N83°33'13"W 41.54' 6. N6°53'10"E 73.61' 7. N6°53'10"E 139.19' 8. N83°06'04"W 190.04' 9. S47°57'27"W 71.02' 10. N6°09'03"E 91.62' 11. N6°09'03"E 71.03' 12. S6°W 571.2' 13. S73°18'33"E 195.45' 14. N13°53'31"E 572.65'

TAXLOT 2300 (N. OF ROAD) 1. N6°52'54"E 60' 2. N83°07'06"W 197.71' 3. N83°07'06"W 51.37' 4. N6°56'55"W 11.82' 5. N6°56'55"W 49.84' 6. N82°49'01"E 49.88' 7. S6°56'55"E 49.84' 8. S6°56'55"E 24.3'



SEE MAP 28 7 24

SEE MAP 28 6 30

SEE MAP 28 6 20C

4,136,000 540,500 28 6 19