

THIS MAP WAS PREPARED FOR ASSESSMENT PURPOSE ONLY.

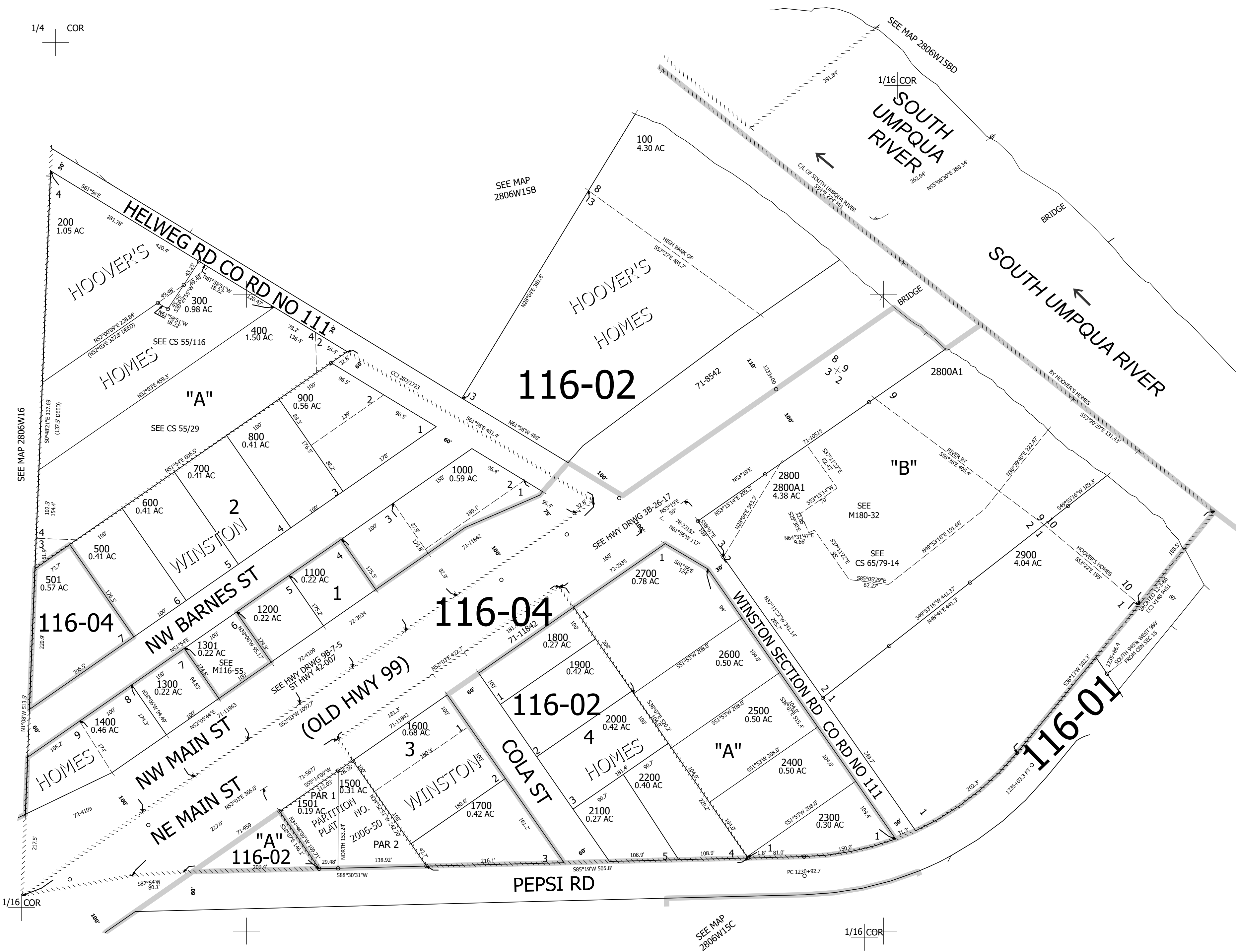
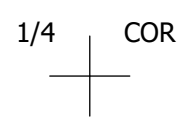
Upper Left:
123°24'17"W 43°8'6"N
4146109E 548601N ft

NW1/4 SW1/4 SEC.15 T.28S. R.06W. W.M.
DOUGLAS COUNTY
1" = 100'

Date Exported 2025-02-03

280615CB
Winston

CANCELLED NOS:



1/16 COR

SEE MAP 2806W15C

1/16 COR

280615CB
Winston

Lower Right:
123°23'50"W 43°7'50"N
4148084E 546862N ft