

THIS MAP WAS PREPARED FOR ASSESSMENT PURPOSE ONLY.

Upper Left:
123°24'21"W 43°8'35"N
4145939E 551474N ft

NW1/4 NW1/4 SEC.15 T.28S. R.06W. W.M.
DOUGLAS COUNTY
1" = 100'

Date Exported 2025-11-03

280615BB

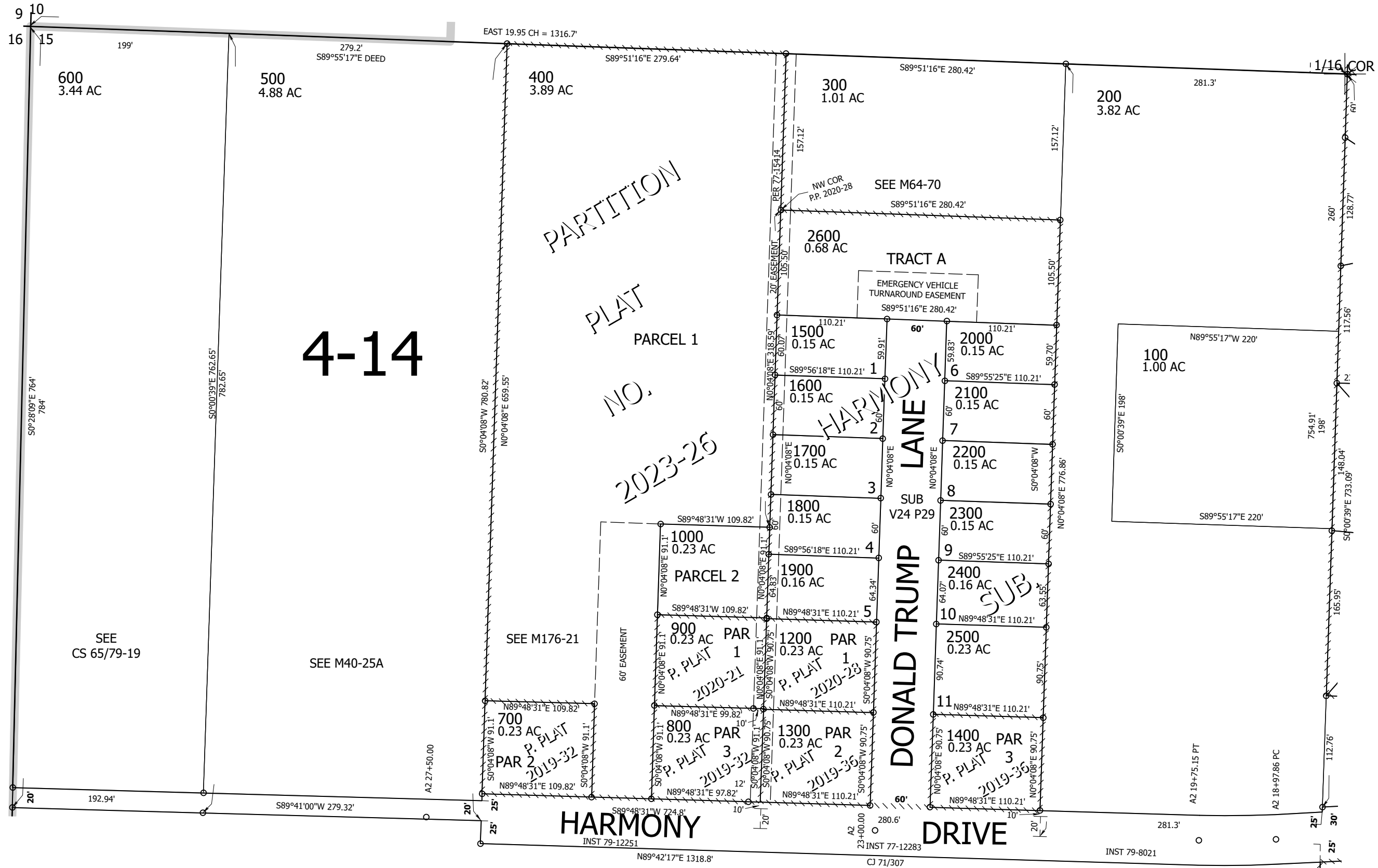
CANCELLED NOS:
1100

SEE MAP
2806W10C

SEE MAP
2806W16

SEE MAP
2806W15BA

SEE MAP
2806W15B



280615BB

Lower Right:
123°23'53"W 43°8'18"N
4147916E 549754N ft